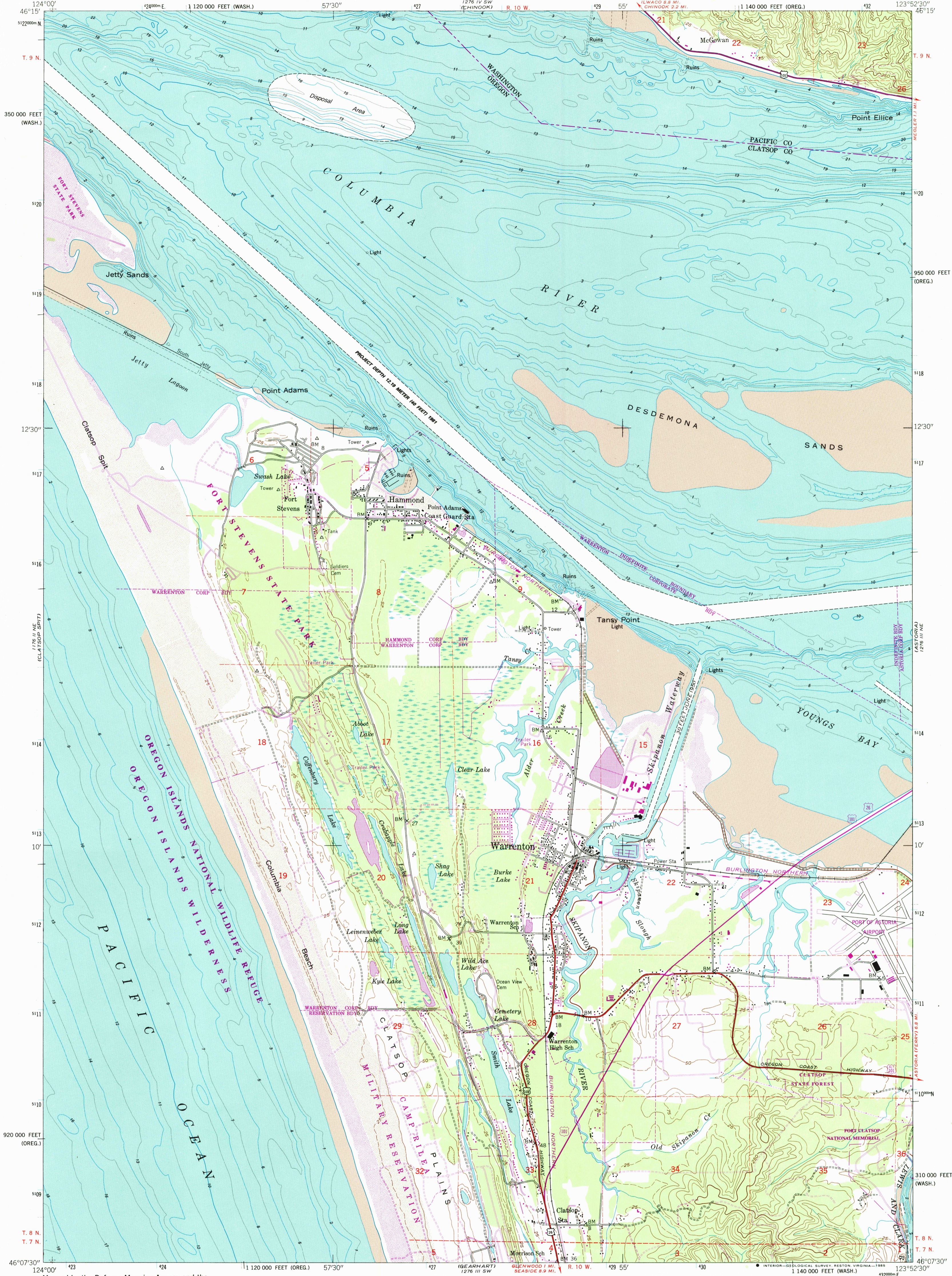


UNITED STATES
DEPARTMENT OF THE INTERIOR
GEOLOGICAL SURVEY

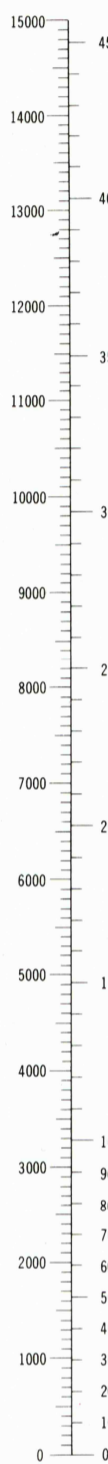
UNITED STATES
DEPARTMENT OF THE ARMY
CORPS OF ENGINEERS

WARRENTON QUADRANGLE
OREGON - WASHINGTON
7.5 MINUTE SERIES (TOPOGRAPHIC - BATHYMETRIC)

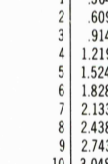


CONVERSION
SCALES

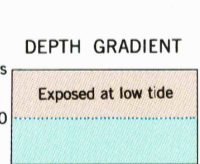
Feet Meters



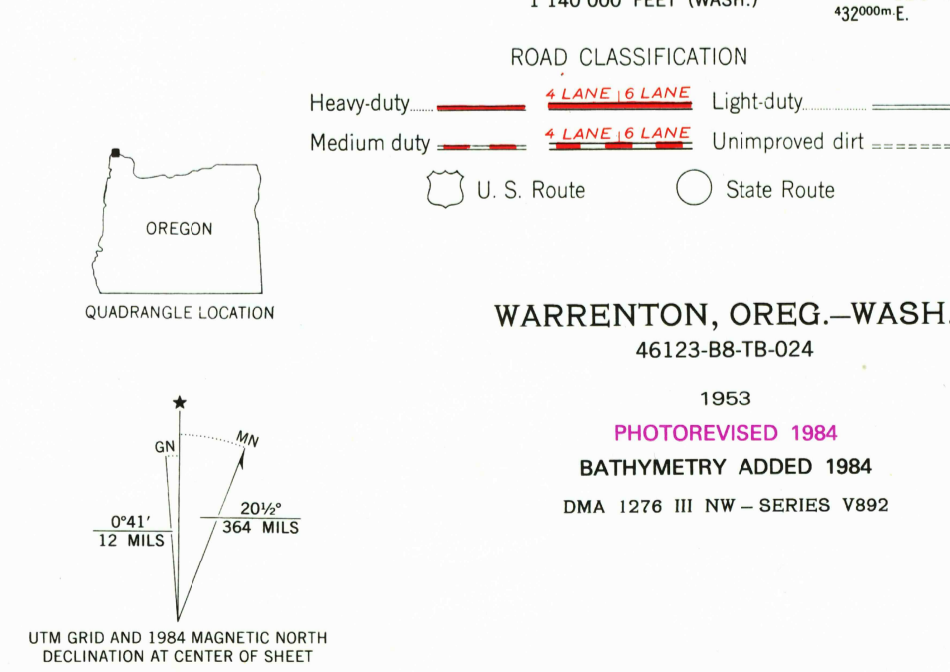
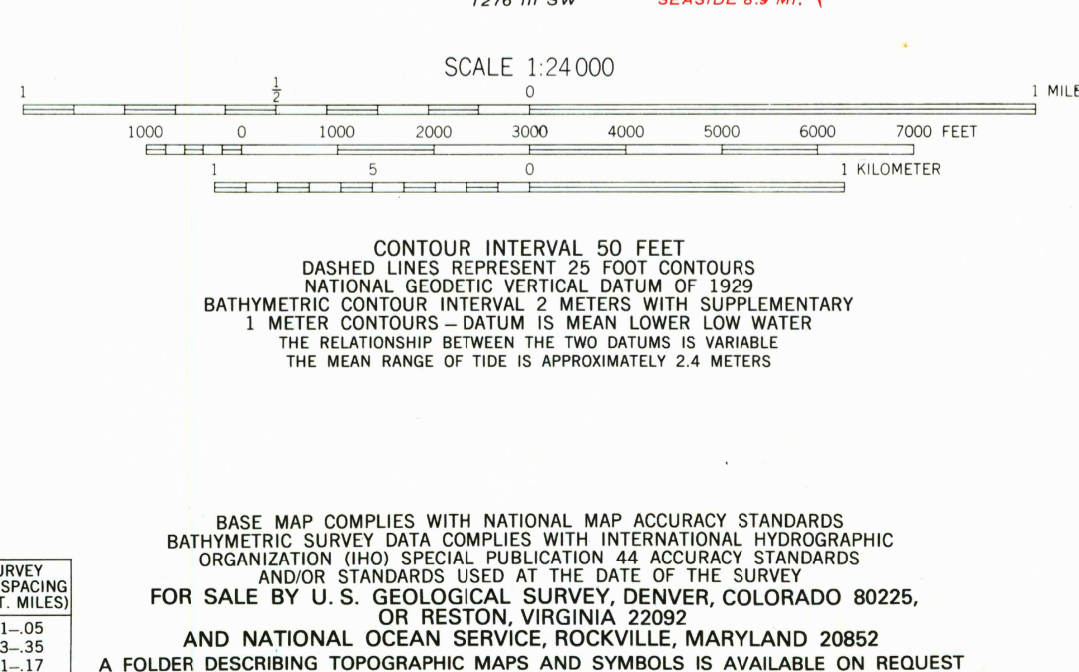
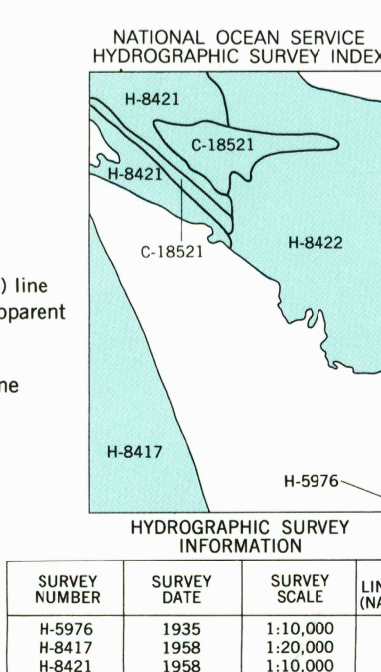
Feet Meters



To convert feet to meters
multiply by 3.048
To convert meters to feet
multiply by 3.2808



Maped by the Defense Mapping Agency and the
National Ocean Service
Published for civil use by the Geological Survey
Control by NOS/NOAA, USCE and Pacific Power
and Light Company
Topography from aerial photographs by multiplex methods
Aerial photographs taken 1943. Field checked 1953
Bathymetry compiled by the National Ocean Service from
tide-coordinated hydrographic surveys. This information
is not intended for navigational purposes
Mean low water (dotted) line and mean high water (heavy solid) line
Polyconic projection. 1927 North American Datum
10,000-foot grid based on Oregon coordinate system, north zone
and Washington coordinate system, south zone
1000-meter Universal Transverse Mercator grid ticks,
zone 10, shown in blue
To place on the predicted North American Datum 1983,
move the projection lines 24 meters north and
97 meters east as shown by dashed corner ticks
There may be private inholdings within the boundaries of
the National or State reservations shown on this map
Revisions shown in purple compiled by the Geological Survey
from aerial photographs taken 1981 and other sources
This information not field checked. Map edited 1984



WARRENTON, OREG.-WASH.
46123-B8-TB-024
1953
PHOTOREVISED 1984
BATHYMETRY ADDED 1984
DMA 1276 III NW - SERIES V892