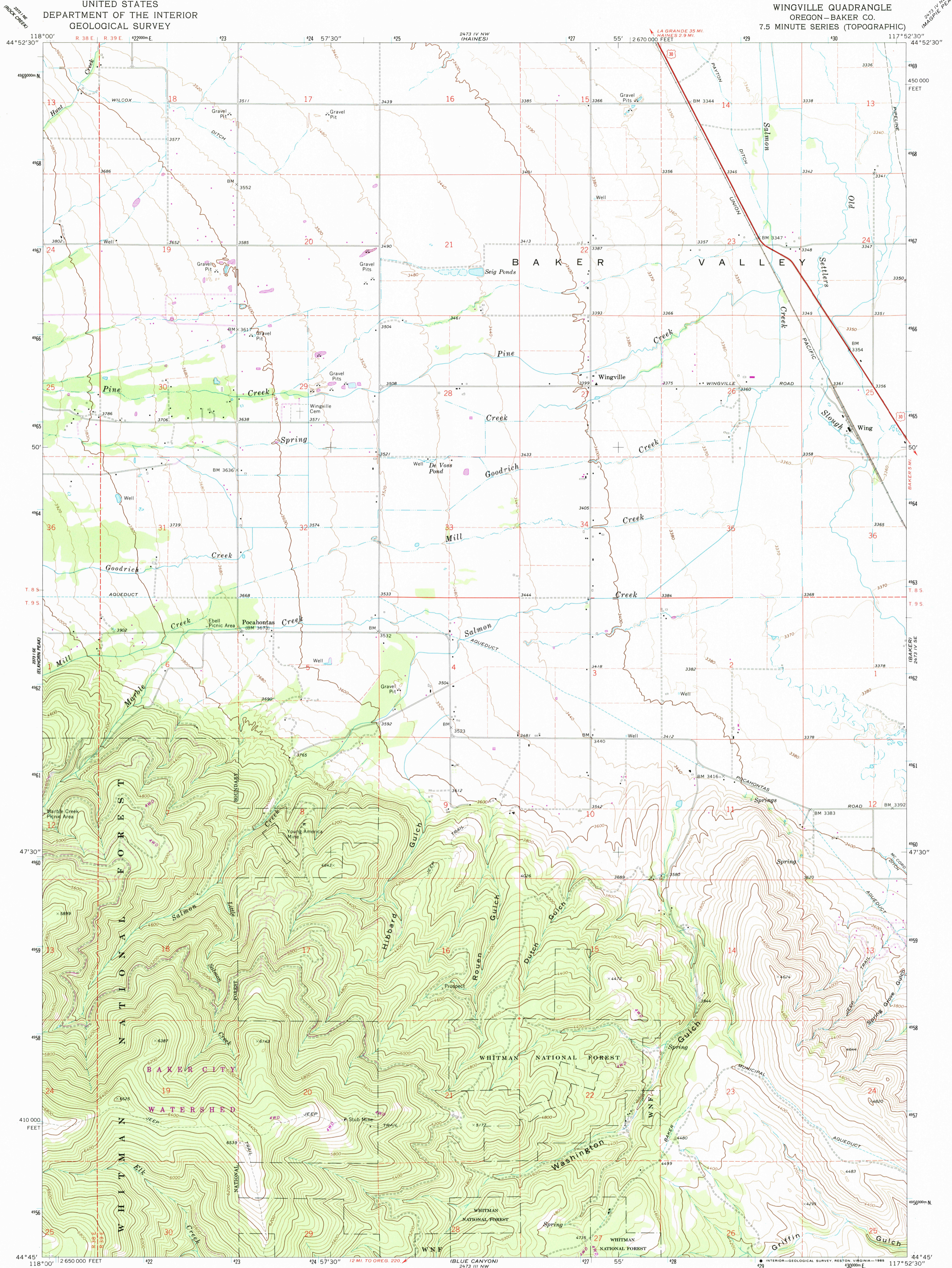


UNITED STATES
DEPARTMENT OF THE INTERIOR
GEOLOGICAL SURVEY

WINGVILLE QUADRANGLE
OREGON—BAKER CO.
7.5 MINUTE SERIES (TOPOGRAPHIC)



Mapped, edited, and published by the Geological Survey

Control by USGS, NOS/NOAA, and State of Oregon

Topography by photogrammetric methods from aerial

photographs taken 1966. Field checked 1967

Polyconic projection. 1927 North American datum

10,000-foot grid based on Oregon coordinate system,

north zone

1000-meter Universal Transverse Mercator grid ticks,

zone 11, shown in blue

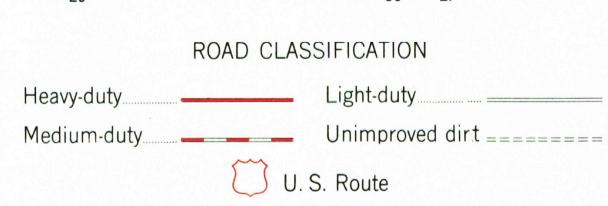
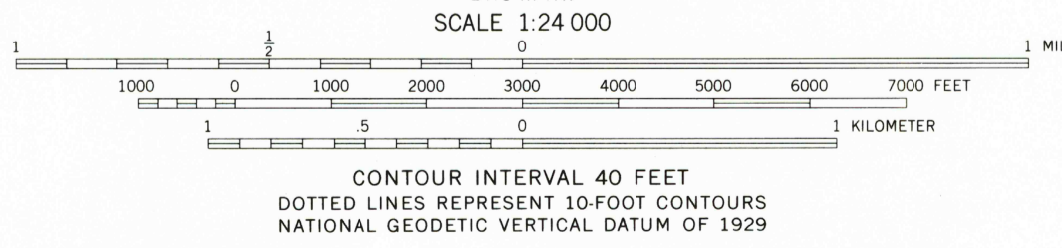
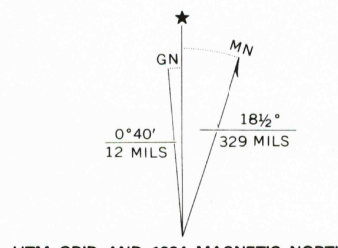
To place on the predicted North American Datum 1983

move the projection lines 17 meters north and

81 meters east as shown by dashed corner ticks

There may be private inholdings within the boundaries of

the National or State reservations shown on this map



WINGVILLE, OREG.
44117-G8-TF-024

1967
PHOTOREVISED 1984

DMA 2473 IV SW—SERIES V892

THIS MAP COMPLIES WITH NATIONAL MAP ACCURACY STANDARDS
FOR SALE BY U. S. GEOLOGICAL SURVEY, DENVER, COLORADO 80225, OR RESTON, VIRGINIA 22092
A FOLDER DESCRIBING TOPOGRAPHIC MAPS AND SYMBOLS IS AVAILABLE ON REQUEST

Revision shown in purple and woodland compiled from
aerial photographs taken 1981 and other sources
Partial field check by U.S. Forest Service. Map edited 1984