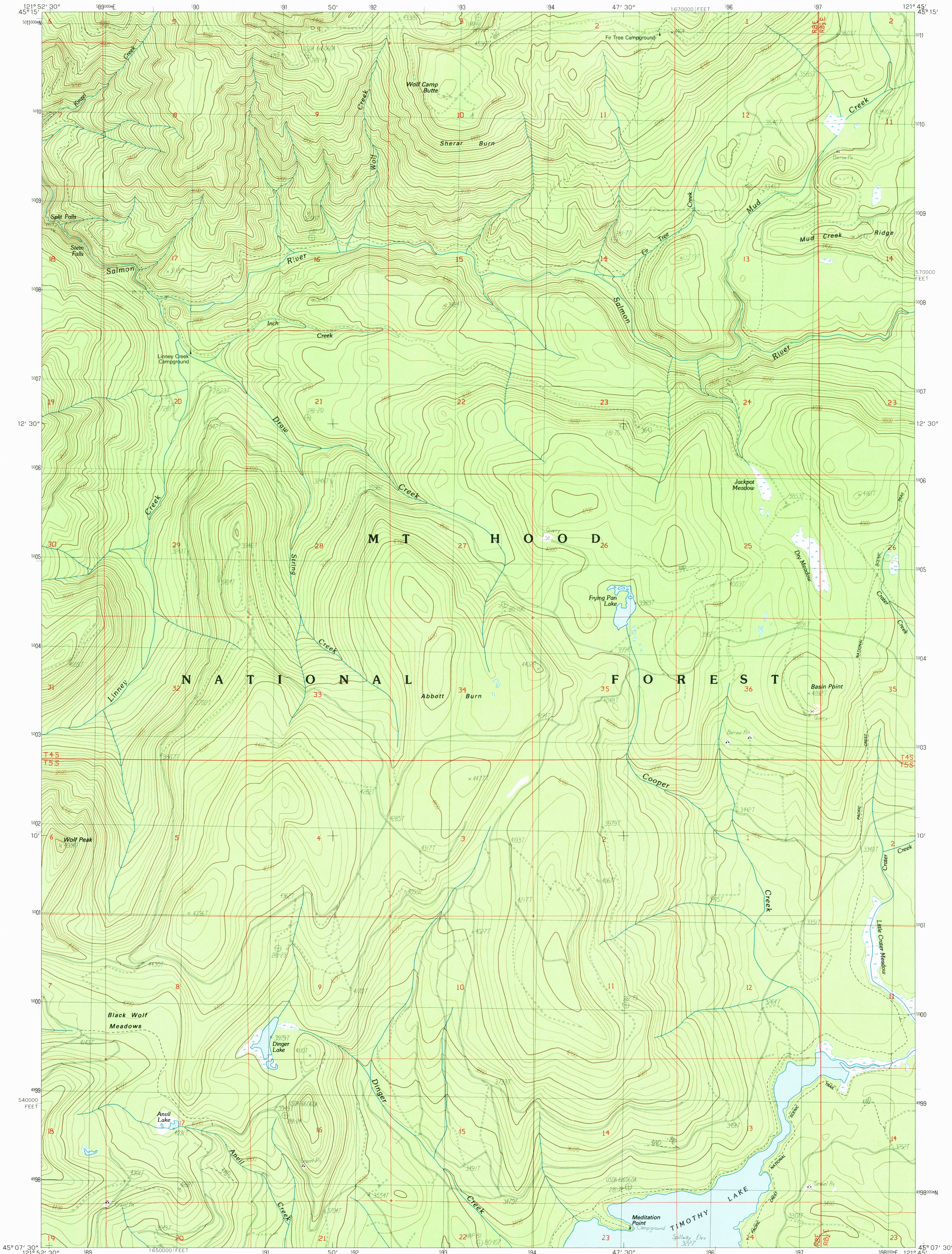


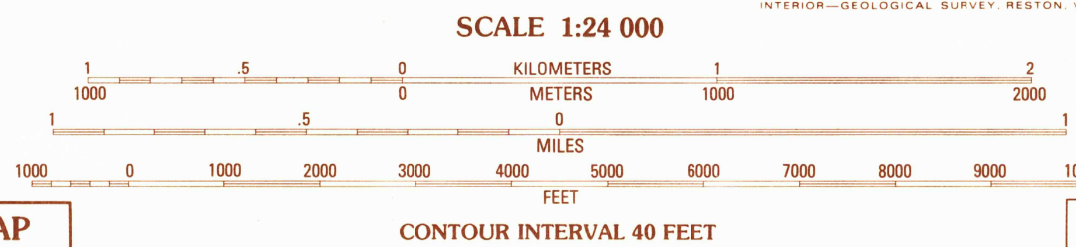
UNITED STATES  
DEPARTMENT OF THE INTERIOR  
GEOLOGICAL SURVEY

WOLF PEAK QUADRANGLE  
OREGON—CLACKAMAS CO.  
7.5 MINUTE SERIES (TOPOGRAPHIC)



PRODUCED BY THE UNITED STATES GEOLOGICAL SURVEY  
CONTROL BY ..... USGS, NOS/NOAA  
COMPILED FROM AERIAL PHOTOGRAPHS TAKEN ..... 1981  
FIELD CHECKED ..... 1983. MAP EDITED ..... 1985  
PROJECTION ..... LAMBERT CONFORMAL CONIC  
GRID: 1000-METER UNIVERSAL TRANSVERSE MERCATOR ..... ZONE 10  
11,000-FOOT STATE GRID TICS ..... OREGON, NORTH ZONE  
UTM GRID DECLINATION ..... 0°51' EAST  
1980 MAGNETIC NORTH DECLINATION ..... 19°30' EAST  
VERTICAL DATUM ..... NATIONAL GEODETIC VERTICAL DATUM OF 1929  
HORIZONTAL DATUM ..... 1927 NORTH AMERICAN DATUM  
To place on the predicted North American Datum of 1983,  
move the projection lines as shown by dashed corner ticks  
( 22 meters north / 92 meters east )  
There may be private inholdings within the boundaries of any  
Federal and State Reservations shown on this map

**PROVISIONAL MAP**  
Produced from original  
manuscript drawings. Informa-  
tion shown as of date of  
photography.



CONTOUR INTERVAL 40 FEET

To convert meters to feet multiply by 3.2808  
To convert feet to meters multiply by 0.3048



QUADRANGLE LOCATION

1	2	3	1 Rhododendron
4	5	2 Government Camp	
6	7	3 Mt. Hood South	
		4 High Rock	
		5 Wapinitia Pass	
		6 Mt. Mitchell	
		7 Timothy Lake	
		8 Mt. Wilson	

ADJOINING 7.5' QUADRANGLE NAMES

**ROAD LEGEND**  
Improved Road .....  
Unimproved Road .....  
Trail .....  
Interstate Route .....  
U.S. Route .....  
State Route .....

**WOLF PEAK, OREG.**  
PROVISIONAL EDITION 1985

45121-B7-TF-024

THIS MAP COMPLIES WITH NATIONAL MAP ACCURACY STANDARDS  
FOR SALE BY U. S. GEOLOGICAL SURVEY, DENVER, COLORADO 80225, OR RESTON, VIRGINIA 22092