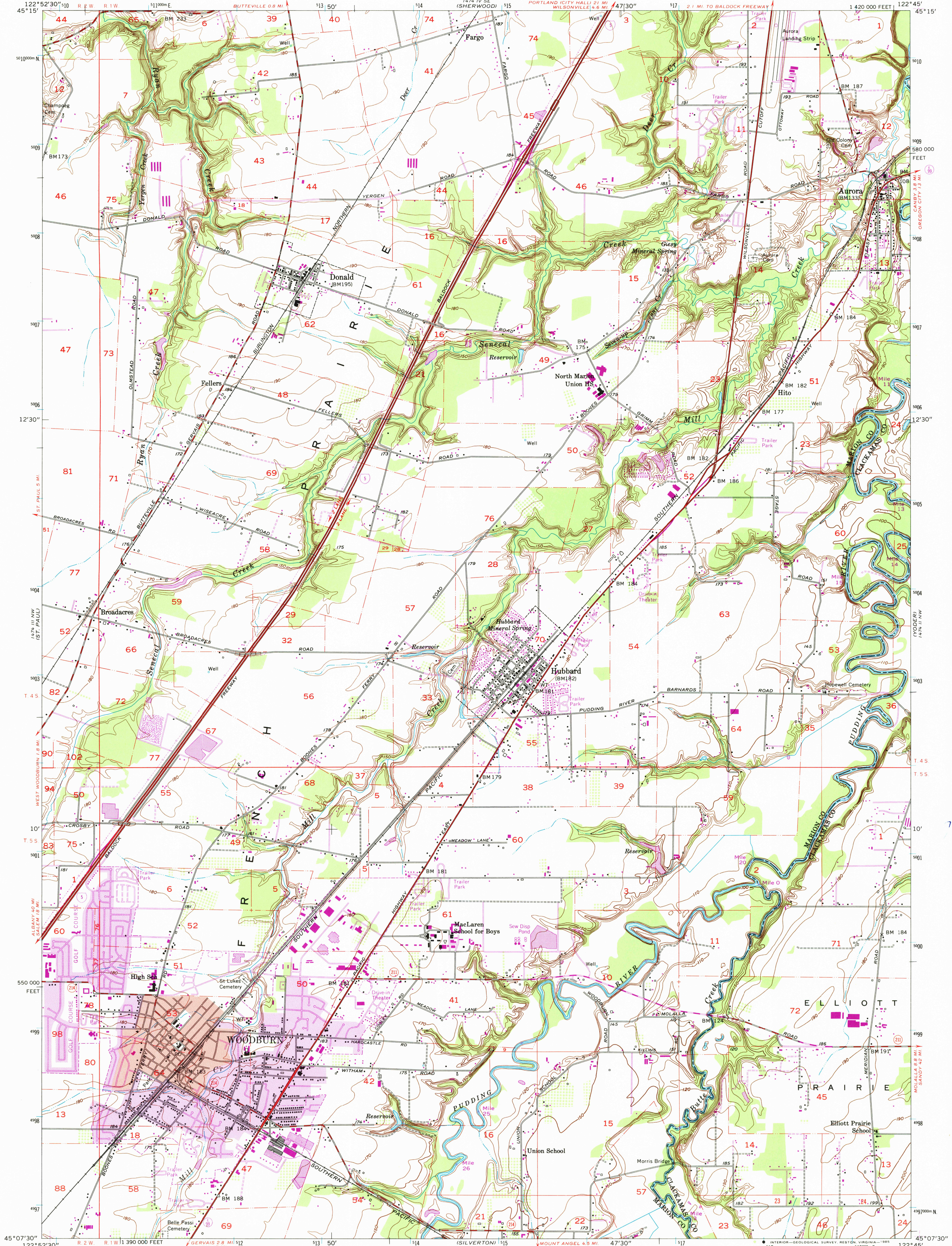
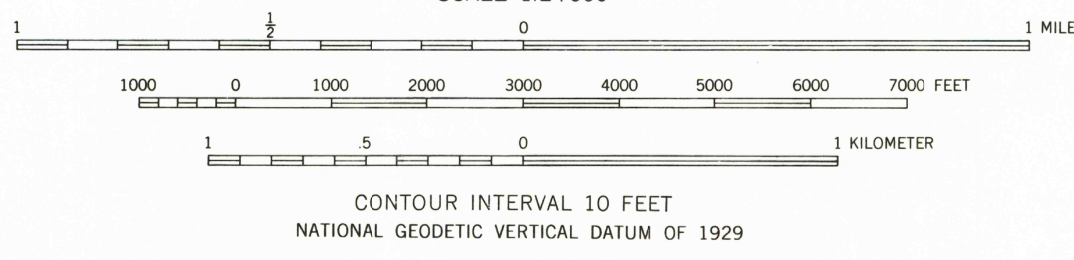
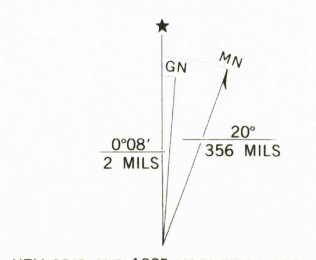


UNITED STATES
DEPARTMENT OF THE INTERIOR
GEOLOGICAL SURVEY

WOODBURN QUADRANGLE
OREGON
7.5 MINUTE SERIES (TOPOGRAPHIC)



Mapped, edited, and published by the Geological Survey
Control by USGS, USC&GS, USCE, and State of Oregon
Topography from aerial photographs by Kelsh plotter
and by planetable surveys 1956. Aerial photographs taken 1954
Polyconic projection. 1927 North American datum
10,000-foot grid based on Oregon coordinate system,
north zone
1000-meter Universal Transverse Mercator grid ticks,
zone 10, shown in blue
Red tint indicates areas in which only
landmark buildings are shown
To place on the predicted North American Datum 1983,
move the projection lines 23 meters north and
95 meters east as shown by dashed corner ticks



ROAD CLASSIFICATION
Heavy-duty ——— Light-duty ———
Medium-duty ——— Unimproved dirt ———
U.S. Route ——— State Route ———
Interstate Route ———
WOODBURN, OREG.
45122-B7-TF-024
1956
PHOTOREVISED 1985
DMA 1474 III NE-SERIES V892



USGS NMD HISTORICAL MAP
MAR 14 1986
REC'D FILE COPY