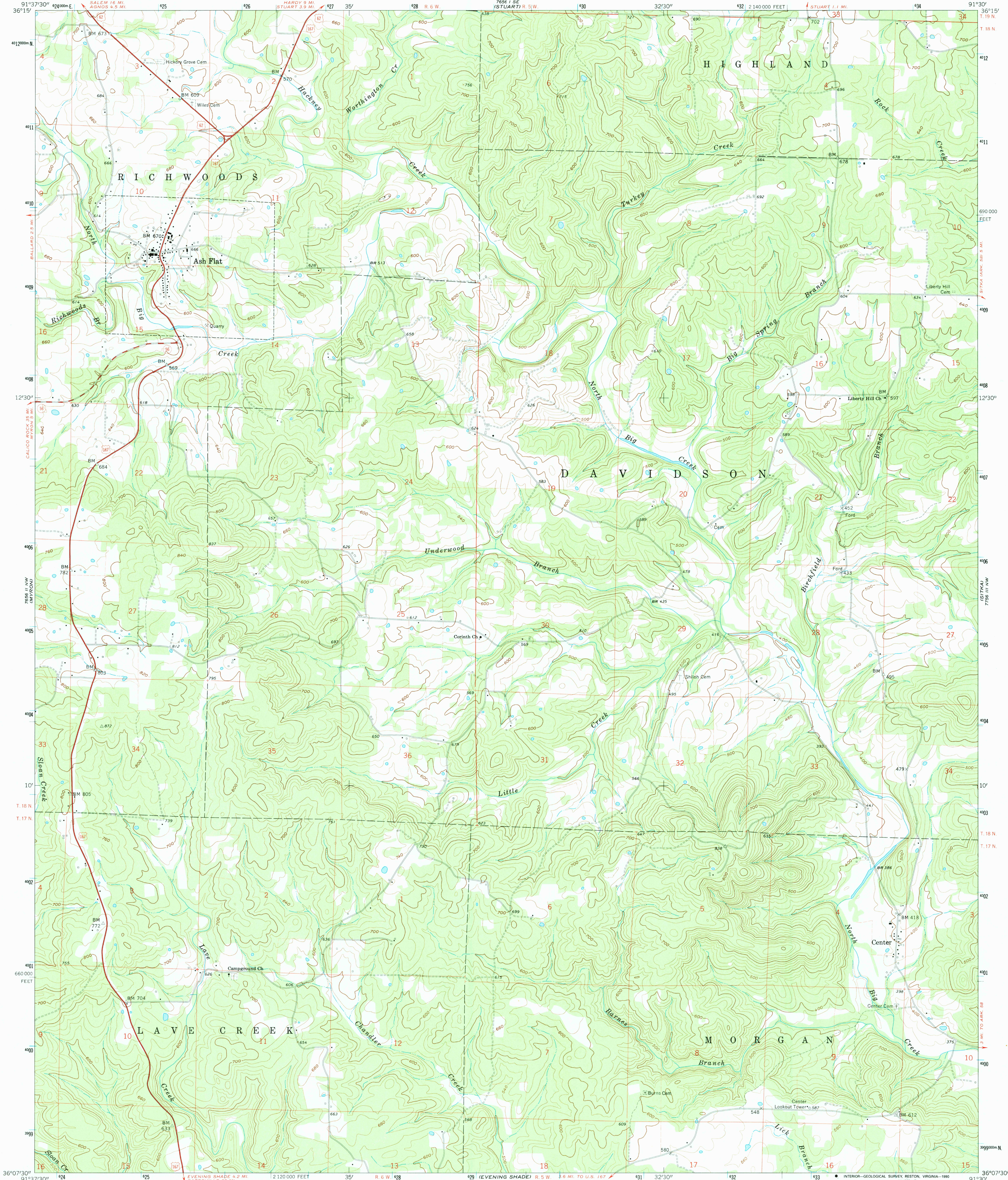


7656 I SW  
(ADNOS)

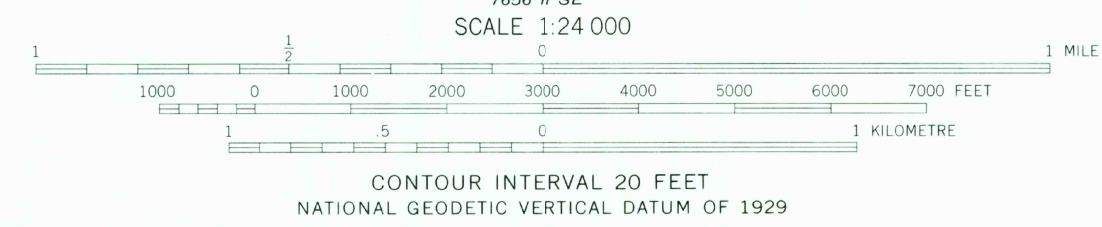
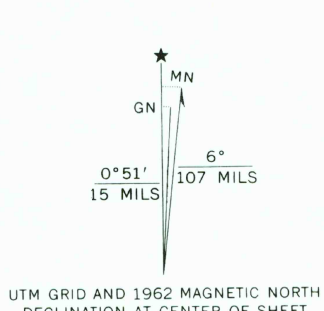
UNITED STATES  
DEPARTMENT OF THE INTERIOR  
GEOLOGICAL SURVEY

ASH FLAT QUADRANGLE  
ARKANSAS—SHARP CO.  
7.5 MINUTE SERIES (TOPOGRAPHIC)

7656 I SW  
(HARDY)

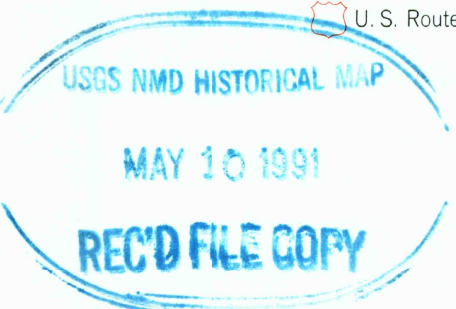


Mapped, edited, and published by the Geological Survey  
Control by USGS and USC&GS  
Topography by photogrammetric methods from aerial  
photographs taken 1959. Field checked 1962  
Polyconic projection. 1927 North American datum  
10,000-foot grid based on Arkansas coordinate system, north zone  
1000-metre Universal Transverse Mercator grid ticks,  
zone 15, shown in blue  
Fine red dashed lines indicate selected fence and field lines where  
generally visible on aerial photographs. This information is unchecked  
Map photoinspected 1980  
No major culture or drainage changes observed



THIS MAP COMPLIES WITH NATIONAL MAP ACCURACY STANDARDS  
FOR SALE BY U.S. GEOLOGICAL SURVEY, DENVER, COLORADO 80225, OR RESTON, VIRGINIA 22092  
AND ARKANSAS GEOLOGICAL COMMISSION, LITTLE ROCK, ARKANSAS 72204  
A FOLDER DESCRIBING TOPOGRAPHIC MAPS AND SYMBOLS IS AVAILABLE ON REQUEST

ROAD CLASSIFICATION  
Heavy-duty ——— Light-duty ———  
Medium-duty ——— Unimproved dirt ———  
U.S. Route ——— State Route ———



ASH FLAT, ARK  
N3607.5—W9130/7.5  
1962  
PHOTOINSPECTED 1980  
AMS 7656 I NE—SERIES V884

7656 I SW  
(POUGHKEEPSE)