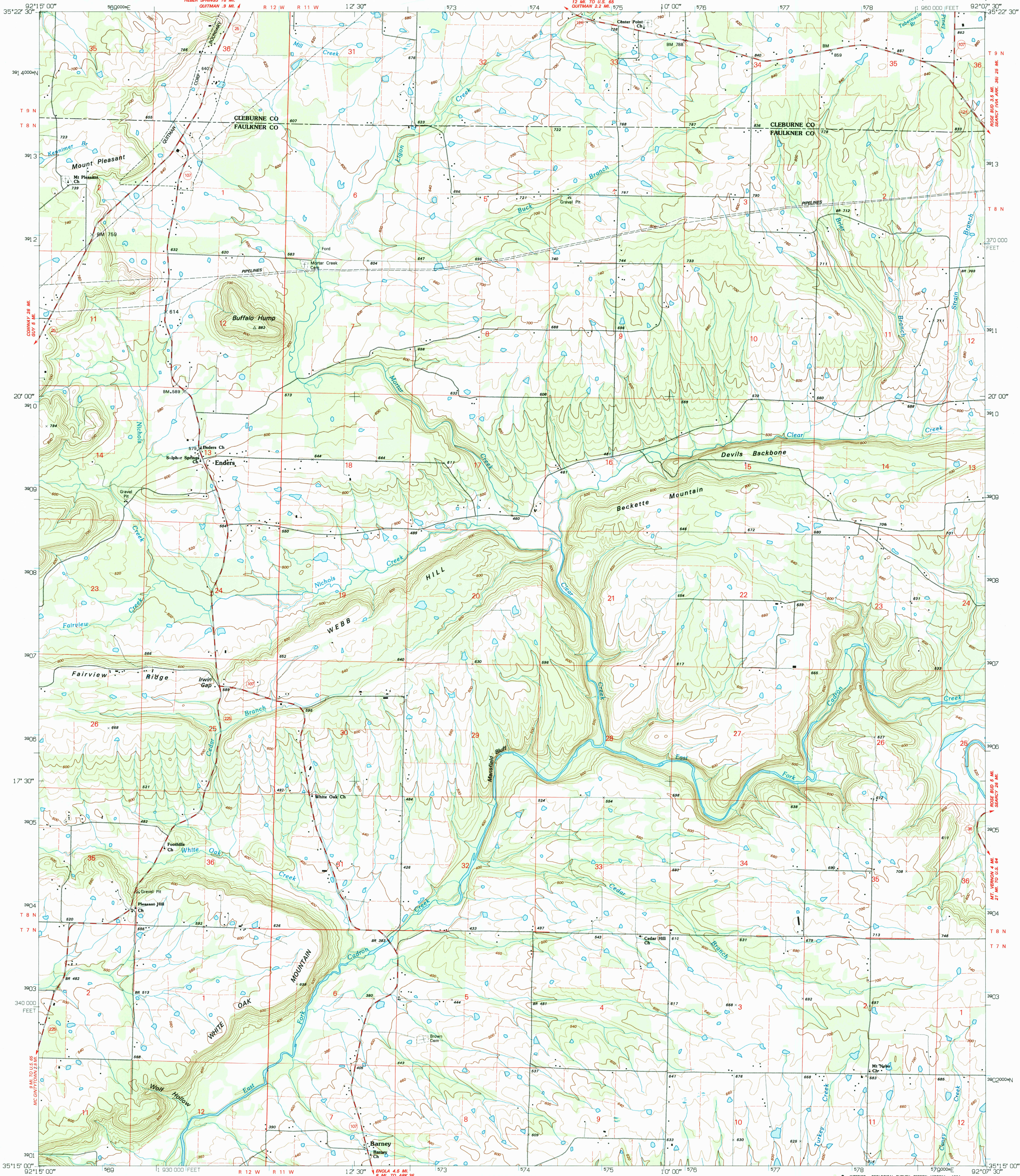


UNITED STATES
DEPARTMENT OF THE INTERIOR
GEOLOGICAL SURVEY

BARNEY QUADRANGLE
ARKANSAS
7.5 MINUTE SERIES (TOPOGRAPHIC)



Produced by the United States Geological Survey

Control by USGS and NOS/NOAA

Topography by photogrammetric methods from aerial photographs

taken 1960. Field checked 1963. Revised from aerial photographs

taken 1989-90. Field checked 1993. Map edited 1994

Universal Transverse Mercator projection

10,000-foot grid ticks: Arkansas coordinate system, north zone

1000-meter Universal Transverse Mercator grid ticks, zone 15, shown in blue

1927 North American Datum (NAD 27)

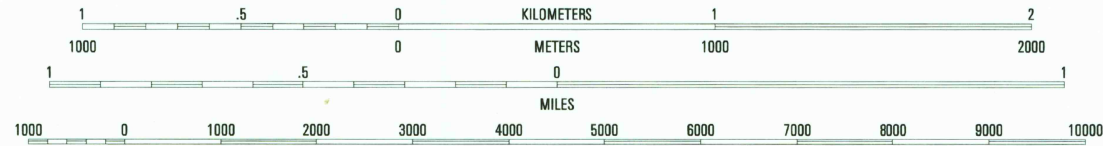
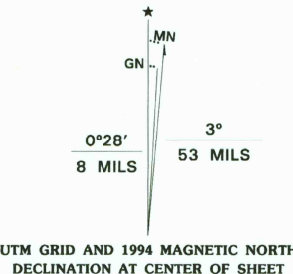
North American Datum of 1983 (NAD 83) is shown by dashed corner ticks

The values of the shift between NAD 27 and NAD 83 for 7.5-minute

intersections are given in USGS Bulletin 1875

Fine red dashed lines indicate selected fence and field lines where

generally visible on aerial photographs. This information is unchecked



CONTOUR INTERVAL 20 FEET
NATIONAL GEODETIC VERTICAL DATUM OF 1929

THIS MAP COMPLIES WITH NATIONAL MAP ACCURACY STANDARDS
FOR SALE BY U.S. GEOLOGICAL SURVEY, DENVER, COLORADO 80225, OR RESTON, VIRGINIA 22092
AND ARKANSAS GEOLOGICAL COMMISSION, LITTLE ROCK, ARKANSAS 72204
A FOLDER DESCRIBING TOPOGRAPHIC MAPS AND SYMBOLS IS AVAILABLE ON REQUEST



QUADRANGLE LOCATION

1	2	3
4	5	6
7	8	9

1 Morganton
2 Quitman
3 Heber Springs
4 Guy
5 Rose Bud
6 Holland
7 Enola
8 Mount Vernon

ADJOINING 7.5' QUADRANGLE NAMES

ROAD CLASSIFICATION

Primary highway

hard surface

Secondary highway

hard surface

Light-duty road, hard or

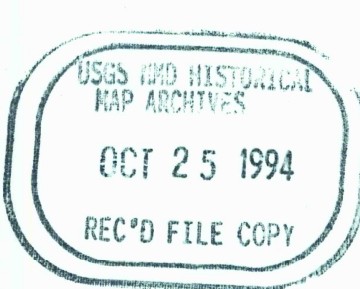
improved surface

Unimproved road

Interstate Route

U.S. Route

State Route



BARNEY, ARK.

35092-C2-TF-024

1994

DMA 7554 I SW - SERIES Y884