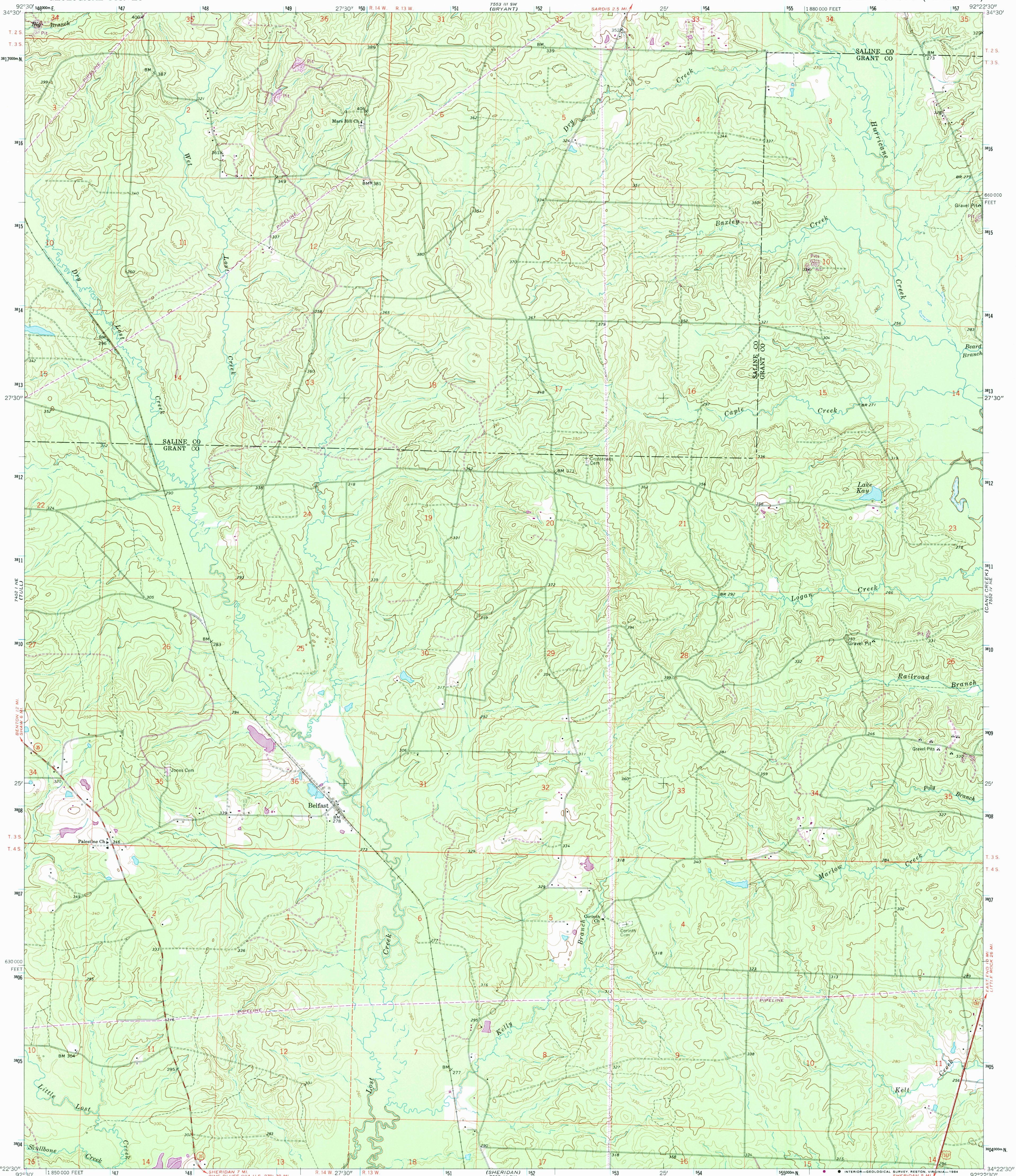


242 1/2 E  
(BEVTON)

UNITED STATES  
DEPARTMENT OF THE INTERIOR  
GEOLOGICAL SURVEY

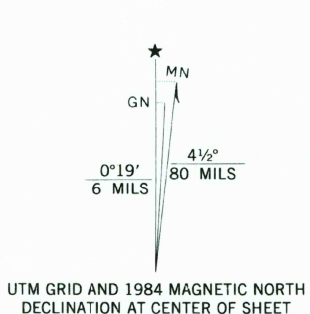
BELFAST QUADRANGLE  
ARKANSAS  
7.5 MINUTE SERIES (TOPOGRAPHIC)

7253 1/2 SE  
(SPRING LAKE)



242 1/2 E  
(PRATTVILLE)

Mapped, edited, and published by the Geological Survey  
Control by USGS and USC&GS  
Topography by photogrammetric methods from aerial photographs taken 1961. Field checked 1964  
Polyconic projection. 1927 North American datum 10,000-foot grid based on Arkansas coordinate system, south zone 1000-meter Universal Transverse Mercator grid ticks, zone 15, shown in blue  
Fine red dashed lines indicate selected fence and field lines where generally visible on aerial photographs. This information is unchecked  
To place on the predicted North American Datum 1983, move the projection lines 8 meters south and 14 meters east as shown by dashed corner ticks



SCALE 1:24 000  
CONTOUR INTERVAL 10 FEET  
NATIONAL GEODETIC VERTICAL DATUM OF 1929  
THIS MAP COMPLIES WITH NATIONAL MAP ACCURACY STANDARDS  
FOR SALE BY U. S. GEOLOGICAL SURVEY, DENVER, COLORADO 80225, OR RESTON, VIRGINIA 22092  
AND ARKANSAS GEOLOGICAL COMMISSION, LITTLE ROCK, ARKANSAS 72204  
A FOLDER DESCRIBING TOPOGRAPHIC MAPS AND SYMBOLS IS AVAILABLE ON REQUEST



ROAD CLASSIFICATION  
Heavy-duty ——— Light-duty ———  
Medium-duty ——— Unimproved dirt ———  
U.S. Route ——— State Route ———

BELFAST, ARK.  
34092-D4-TF-024

1964  
PHOTOREVISED 1984  
DMA 7552 IV NW—SERIES Y884

Revisions shown in purple and woodland compiled from aerial photographs taken 1983 and other sources. This information not field checked. Map edited 1984