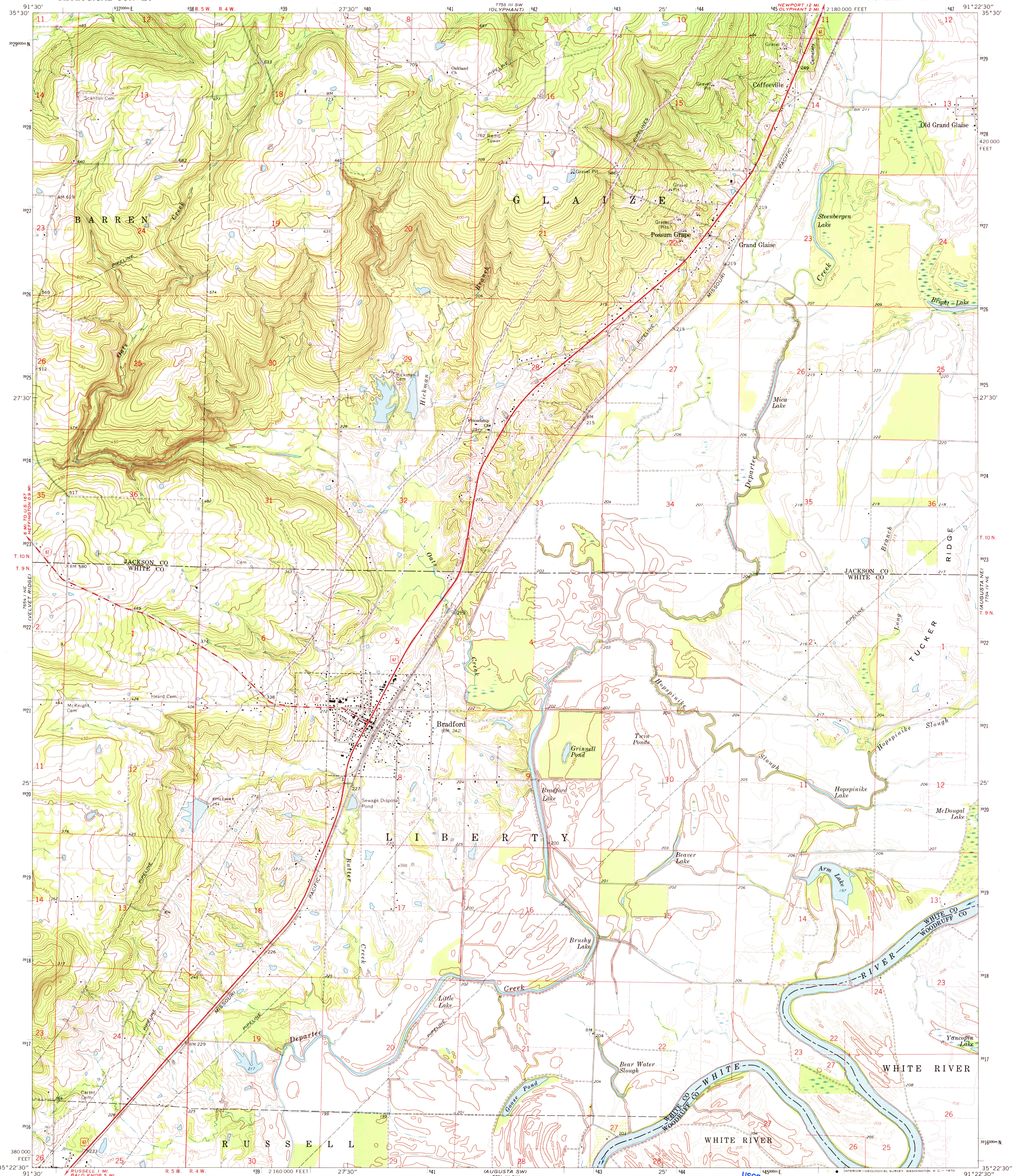


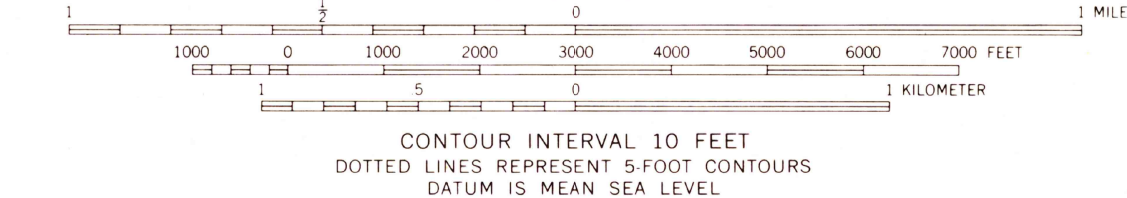
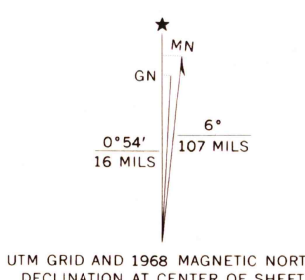
745 10 55
NEWPORT

BRADFORD QUADRANGLE
ARKANSAS
7.5 MINUTE SERIES (TOPOGRAPHIC)
NW/4 AUGUSTA 15' QUADRANGLE

7754 10 55
NEWPORT



Mapped, edited, and published by the Geological Survey
Control by USGS and USC&GS
Topography by photogrammetric methods from aerial
photographs taken 1966. Field checked 1968
Polyconic projection. 1927 North American datum
10,000-foot grid based on Arkansas coordinate system, north zone
1000-meter Universal Transverse Mercator grid ticks,
zone 15, shown in blue
Fine red dashed lines indicate selected fence and field lines where
generally visible on aerial photographs. This information is unchecked



USGS
Historical File
Topographic Division



U.S.G.S.
FILE COPY
TOPOGRAPHIC DIVISION

BRADFORD, ARK.
NW/4 AUGUSTA 15' QUADRANGLE
N3522.5—W9122.5/7.5
1968
AMS 7754 IV NW—SERIES V884

MAY 25 1970