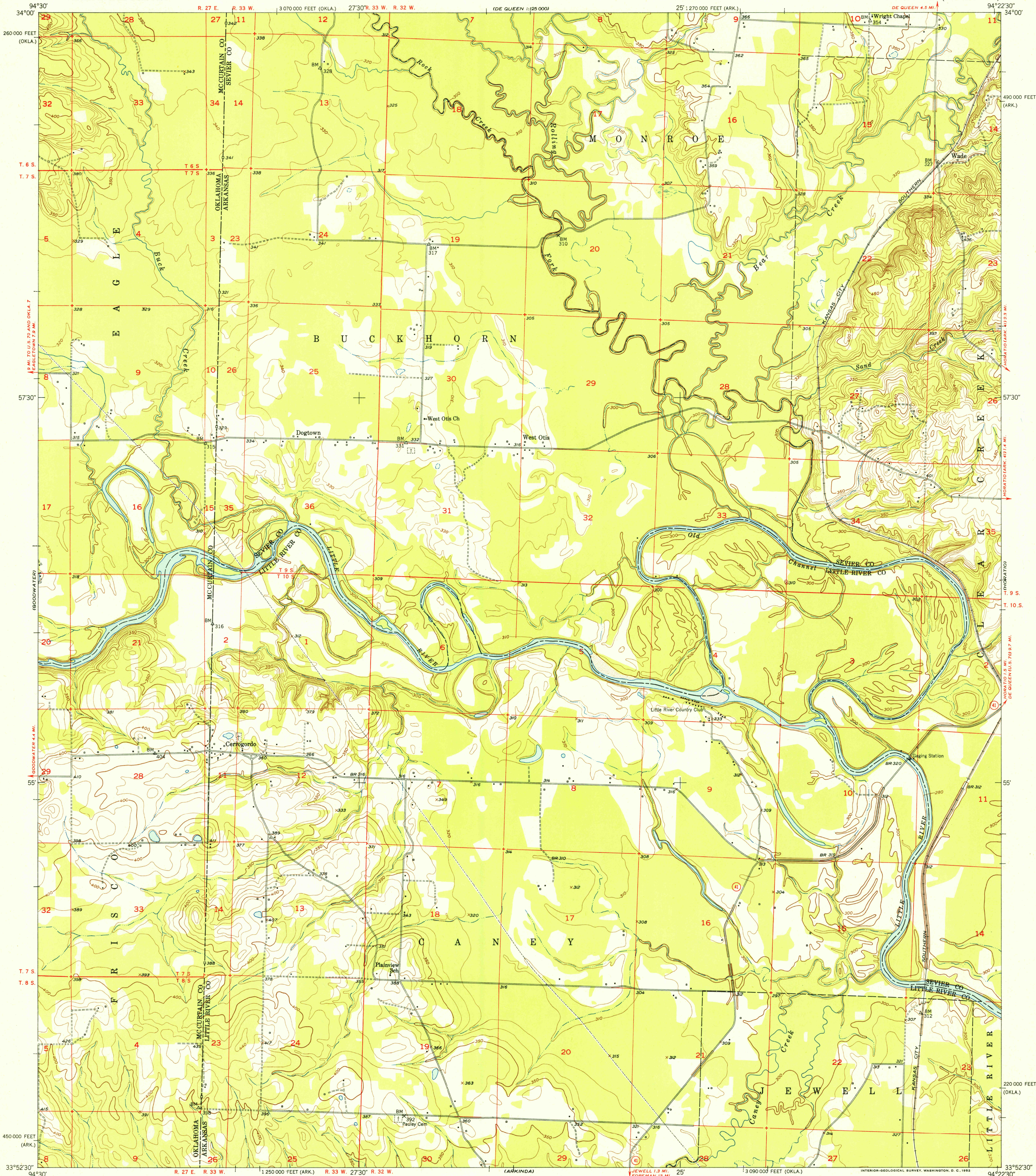


UNITED STATES
DEPARTMENT OF THE INTERIOR
GEOLOGICAL SURVEY

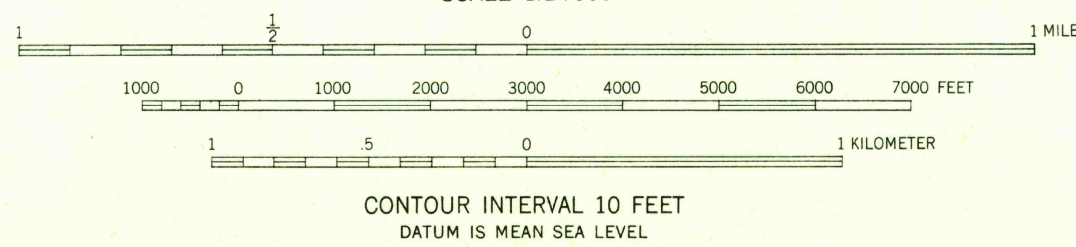
FILE COPY
Inspection and Editing

CERROGORDO QUADRANGLE
ARKANSAS-OKLAHOMA
7.5 MINUTE SERIES (TOPOGRAPHIC)



Mapped, edited, and published by the Geological Survey
Control by USGS, USC&GS, and USCE
Culture and drainage in part compiled from aerial photographs
taken 1949. Topography by plane-table methods 1950-1951
Polyconic projection. 1927 North American datum
10,000-foot grids based on Arkansas coordinate system,
south zone, and Oklahoma coordinate system, south zone

TRUE NORTH
MAGNETIC NORTH
APPROXIMATE MEAN
DECLINATION, 1951



THIS MAP COMPLIES WITH NATIONAL MAP ACCURACY STANDARDS
FOR SALE BY U. S. GEOLOGICAL SURVEY, FEDERAL CENTER, DENVER, COLORADO OR WASHINGTON 25, D. C.
AND BY THE ARKANSAS RESOURCES AND DEVELOPMENT COMMISSION, LITTLE ROCK, ARKANSAS
A FOLDER DESCRIBING TOPOGRAPHIC MAPS AND SYMBOLS IS AVAILABLE ON REQUEST

USGS
Historical File
Topographic Division

FILE COPY
Inspection and Editing

ROAD CLASSIFICATION
Heavy-duty 1 LANE 16 LANE Light-duty
Medium-duty 1 LANE 16 LANE Unimproved dirt
U. S. Route State Route

CERROGORDO, ARK.-OKLA.
N3352.5-W9422.5/7.5

1951

AUG 4 1962