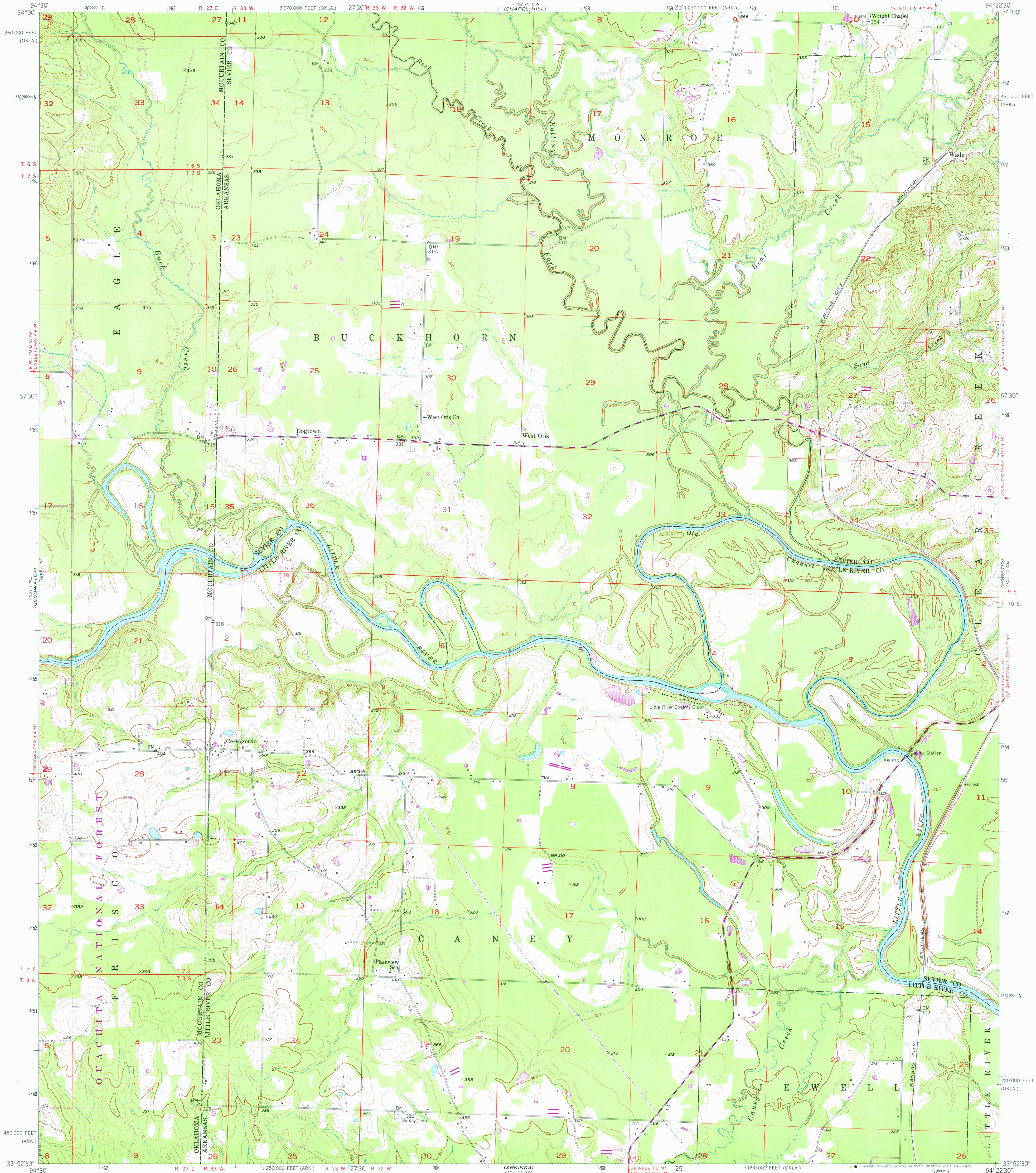
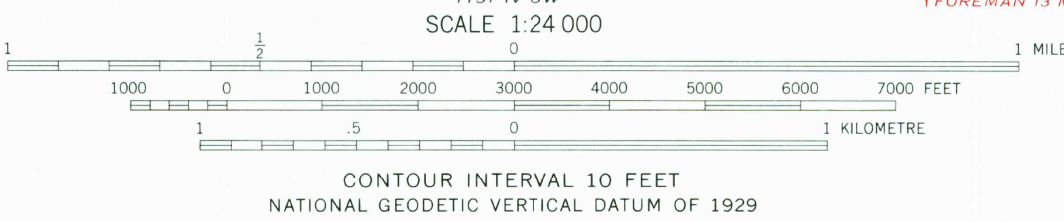
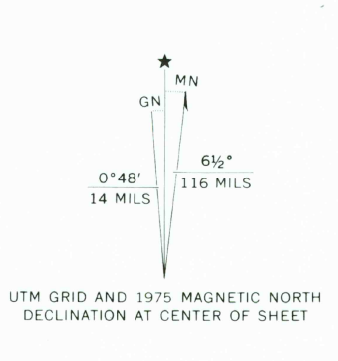


UNITED STATES  
DEPARTMENT OF THE INTERIOR  
GEOLOGICAL SURVEY

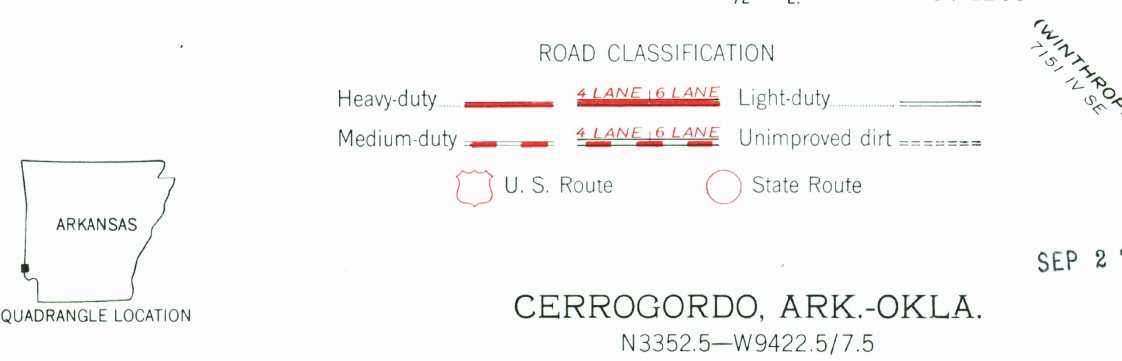
CERROGORDO QUADRANGLE  
ARKANSAS-OKLAHOMA  
7.5 MINUTE SERIES (TOPOGRAPHIC)



Mapped, edited, and published by the Geological Survey  
Control by USGS, USC&GS, and USCE  
Culture and drainage in part compiled from aerial photographs  
taken 1949. Topography by plane-table methods 1950-1951  
Polyconic projection. 1927 North American datum  
10,000-foot grids based on Arkansas coordinate system,  
south zone, and Oklahoma coordinate system, south zone  
1000-metre Universal Transverse Mercator grid ticks,  
zone 15, shown in blue  
Revisions shown in purple compiled from aerial photographs  
taken 1975. This information not field checked



THIS MAP COMPLIES WITH NATIONAL MAP ACCURACY STANDARDS  
FOR SALE BY U. S. GEOLOGICAL SURVEY, DENVER, COLORADO 80225, OR RESTON, VIRGINIA 22092,  
ARKANSAS GEOLOGICAL COMMISSION, LITTLE ROCK, ARKANSAS 72204,  
AND OKLAHOMA GEOLOGICAL SURVEY, NORMAN, OKLAHOMA 73069  
A FOLDER DESCRIBING TOPOGRAPHIC MAPS AND SYMBOLS IS AVAILABLE ON REQUEST



CERROGORDO, ARK.-OKLA.  
N3352.5-W9422.5/7.5

USGS  
Historical File  
Topographic Division

1951  
PHOTOREVISED 1975  
AMS 7151 IV NW-SERIES V884

SEP 27 1976