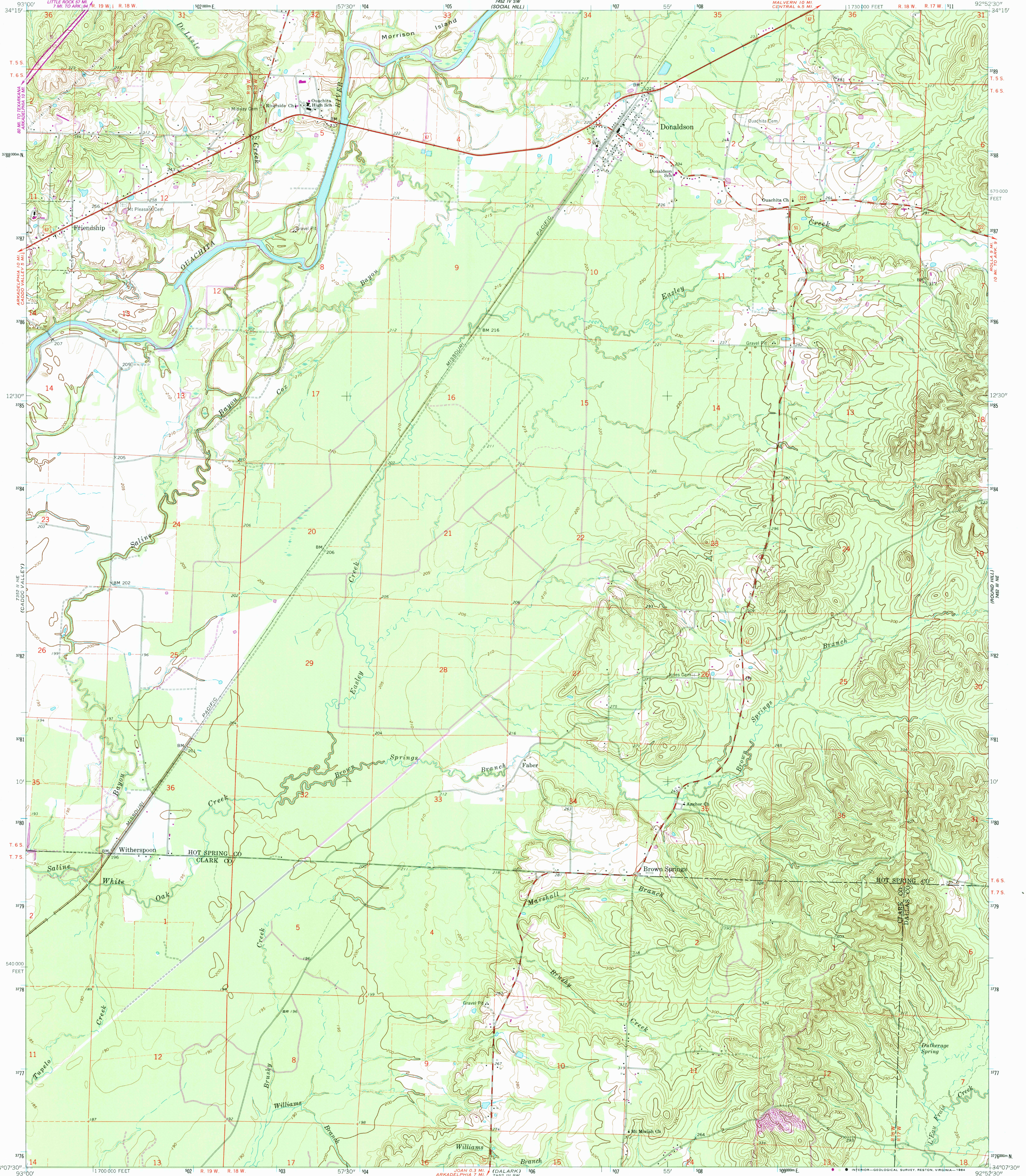


7452 IV SE
(MAYVIEW SOUTH)

UNITED STATES
DEPARTMENT OF THE INTERIOR
GEOLOGICAL SURVEY

DONALDSON QUADRANGLE
ARKANSAS
7.5 MINUTE SERIES (TOPOGRAPHIC)

7452 IV SE
(MAYVIEW SOUTH)



Mapped, edited, and published by the Geological Survey

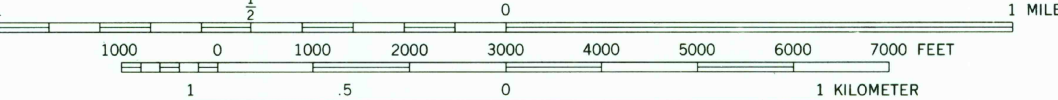
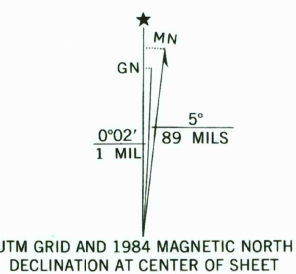
Control by USGS and USC&GS

Topography by photogrammetric methods from aerial photographs taken 1961 and planetable surveys 1964

Polyconic projection. 1927 North American datum
10,000-foot grid based on Arkansas coordinate system, south zone
1000-meter Universal Transverse Mercator grid ticks,
zone 15, shown in blue

Fine red dashed lines indicate selected fence and field lines where
generally visible on aerial photographs. This information is unchecked

To place on the predicted North American Datum 1983
move the projection lines 8 meters south and
16 meters east as shown by dashed corner ticks



CONTOUR INTERVAL 10 FEET
DOTTED LINES REPRESENT 5-FOOT CONTOURS
NATIONAL GEODETIC VERTICAL DATUM OF 1929

THIS MAP COMPLIES WITH NATIONAL MAP ACCURACY STANDARDS
FOR SALE BY U. S. GEOLOGICAL SURVEY, DENVER, COLORADO 80225, OR RESTON, VIRGINIA 22092
AND ARKANSAS GEOLOGICAL COMMISSION, LITTLE ROCK, ARKANSAS 72204
A FOLDER DESCRIBING TOPOGRAPHIC MAPS AND SYMBOLS IS AVAILABLE ON REQUEST

RETURN TO:
NMD HISTORICAL MAP ARCHIVES
USGS NATIONAL CENTER, MS-522
RESTON, VA 22092



QUADRANGLE LOCATION

ROAD CLASSIFICATION	
Primary highway, hard surface	Light-duty road, hard or improved surface
Secondary highway, hard surface	Unimproved road
Interstate Route	U. S. Route
	State Route

DONALDSON, ARK.
34092-B8-TF-024

1964
PHOTOREVISED 1984
DMA 7452 III NW—SERIES V884

Revisions shown in purple and woodland compiled from
aerial photographs taken 1982 and other sources
This information not field checked. Map edited 1984