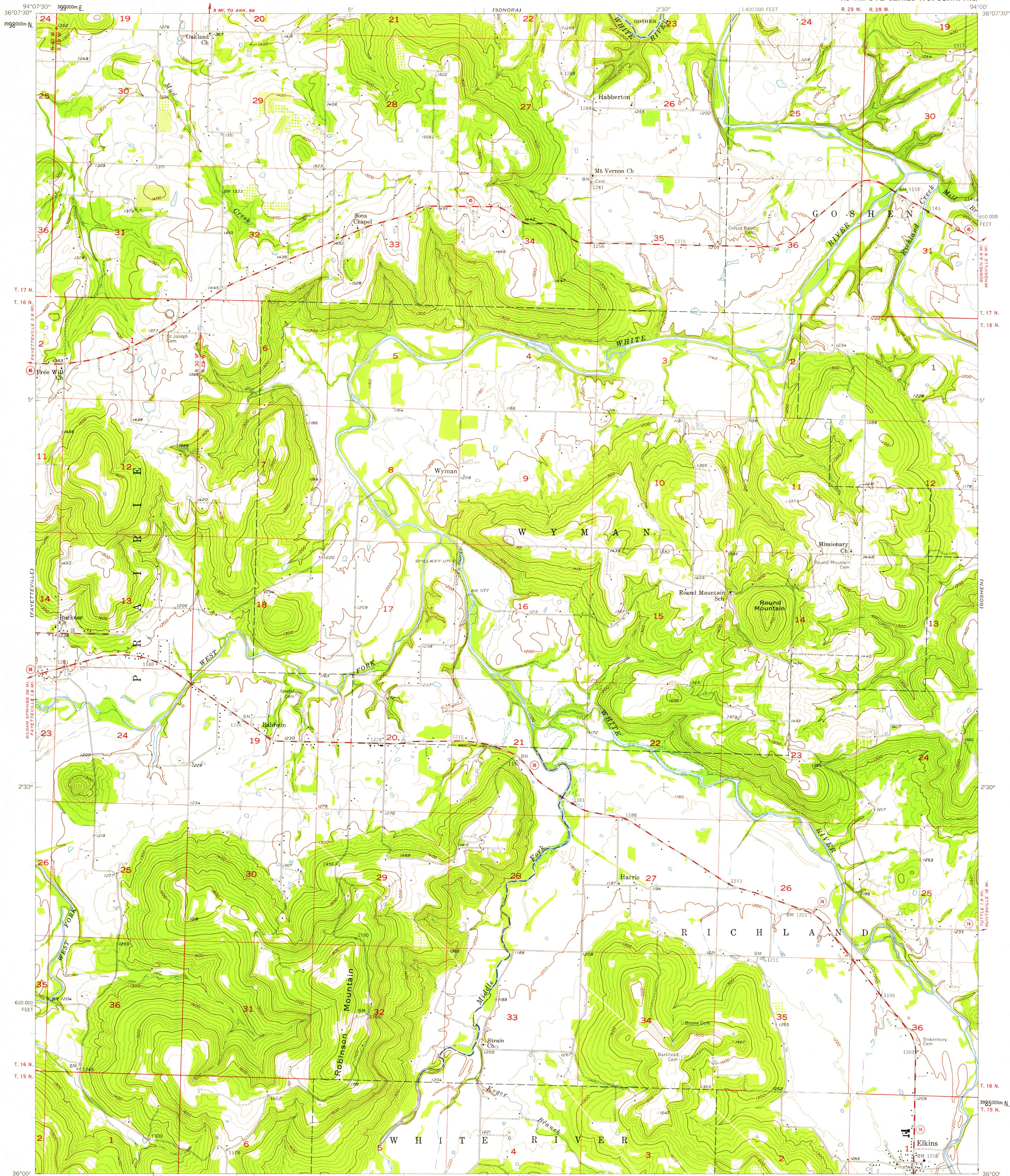


UNITED STATES
DEPARTMENT OF THE INTERIOR
GEOLOGICAL SURVEY

ELKINS QUADRANGLE
ARKANSAS—WASHINGTON CO.
7.5 MINUTE SERIES (TOPOGRAPHIC)



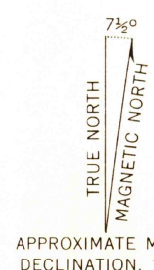
Mapped, edited, and published by the Geological Survey

Control by USGS and USC&GS

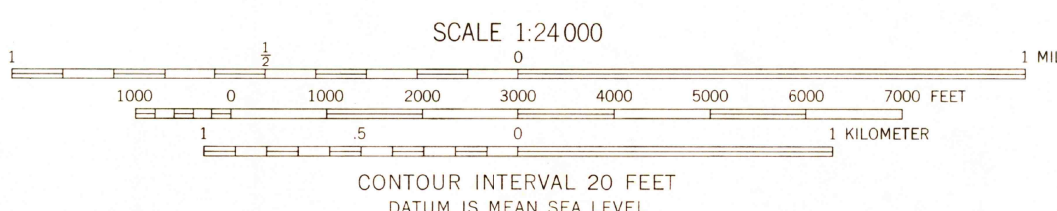
Topography from aerial photographs by photogrammetric methods
Aerial photographs taken 1957. Field check 1957-1958

Polyconic projection. 1927 North American datum
10,000-foot grid based on Arkansas coordinate system, north zone
1000-meter Universal Transverse Mercator grid ticks,
zone 15, shown in blue

Dashed light-blue pattern indicates approximate area to be submerged



APPROXIMATE MEAN
DECLINATION, 1958



QUADRANGLE LOCATION

ROAD CLASSIFICATION
Medium-duty ——— Light-duty ———
Unimproved dirt ———
State Route —○—

USGS
FILE COPY
TOPOGRAPHIC DIVISION

ELKINS, ARK.
N 3600—W 9400/7.5
1958

FEB 13 1959

2345