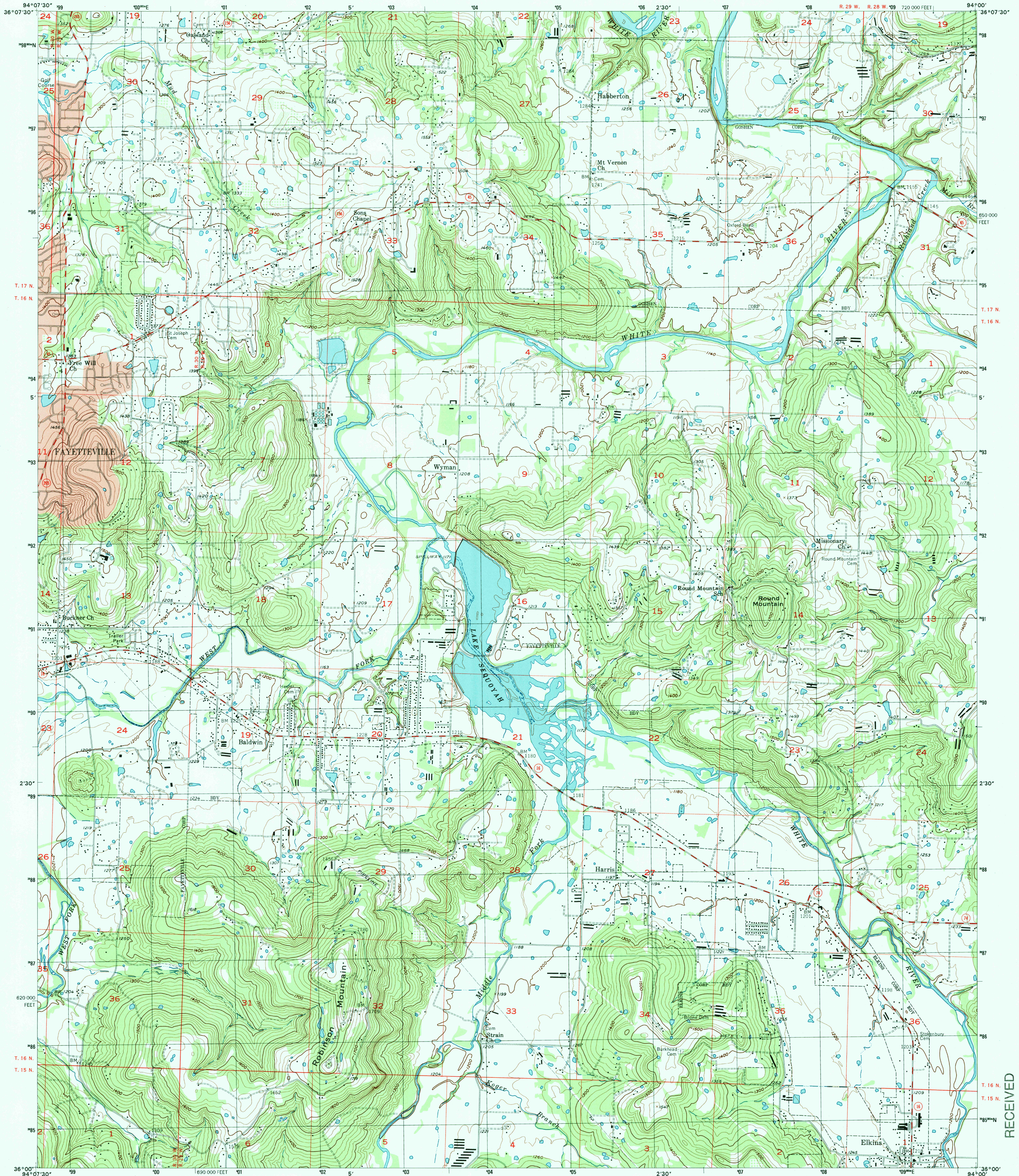
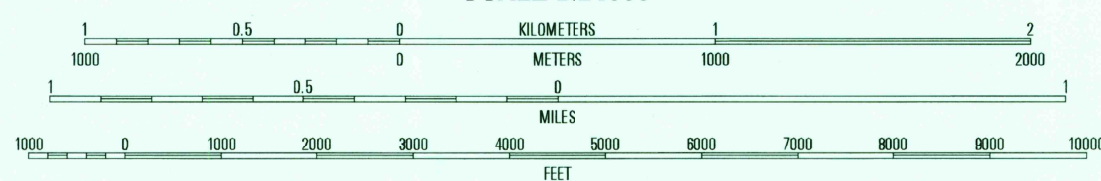
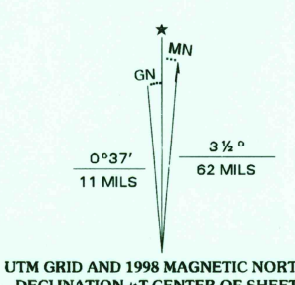


UNITED STATES  
DEPARTMENT OF THE INTERIOR  
GEOLOGICAL SURVEY

ELKINS QUADRANGLE  
ARKANSAS-WASHINGTON CO.  
7.5-MINUTE SERIES (TOPOGRAPHIC)



Produced by the United States Geological Survey  
Topography compiled 1957. Planimetry derived from imagery taken 1994. Public Land Survey System and survey control current as of 1958.  
North American Datum of 1983 (NAD 83). Projection and 1000-meter grid: Universal Transverse Mercator, zone 15 10 000-foot ticks: Arkansas Coordinate System of 1983 (north zone).  
North American Datum of 1927 (NAD 27) is shown by dashed corner ticks. The values of the shift between NAD 83 and NAD 27 for 7.5-minute intersections are obtainable from National Geodetic Survey NADCON software.  
There may be private inholdings within the boundaries of the National or State reservations shown on this map.  
Landmark buildings verified 1958.



CONTOUR INTERVAL 20 FEET  
NATIONAL GEODETIC VERTICAL DATUM OF 1929  
TO CONVERT FROM FEET TO METERS, MULTIPLY BY 0.3048



|   |   |   |                 |
|---|---|---|-----------------|
| 1 | 2 | 3 | 1 Springdale    |
|   |   |   | 2 Searcy        |
|   |   |   | 3 Spring Valley |
| 4 |   | 5 | 4 Fayetteville  |
|   |   |   | 5 Goshen        |
|   |   |   | 6 West Fork     |
| 6 | 7 | 8 | 7 Sulphur City  |
|   |   |   | 8 Durham        |

ROAD CLASSIFICATION  
Primary highway  
hard surface .....  
Secondary highway  
hard surface .....  
Light-duty road, hard or  
improved surface .....  
Unimproved road .....  
Interstate Route  
U.S. Route  
State Route

ELKINS, AR  
1994

RECEIVED  
MAY 31 2000  
USGS NAD  
HISTORICAL MAP ARCHIVES



THIS MAP COMPLIES WITH NATIONAL MAP ACCURACY STANDARDS  
FOR SALE BY U.S. GEOLOGICAL SURVEY, P.O. BOX 25286, DENVER, COLORADO 80225  
AND ARKANSAS GEOLOGICAL COMMISSION, LITTLE ROCK, ARKANSAS 72204  
A FOLDER DESCRIBING TOPOGRAPHIC MAPS AND SYMBOLS IS AVAILABLE ON REQUEST

NIMA 7156 II SE-SERIES V884