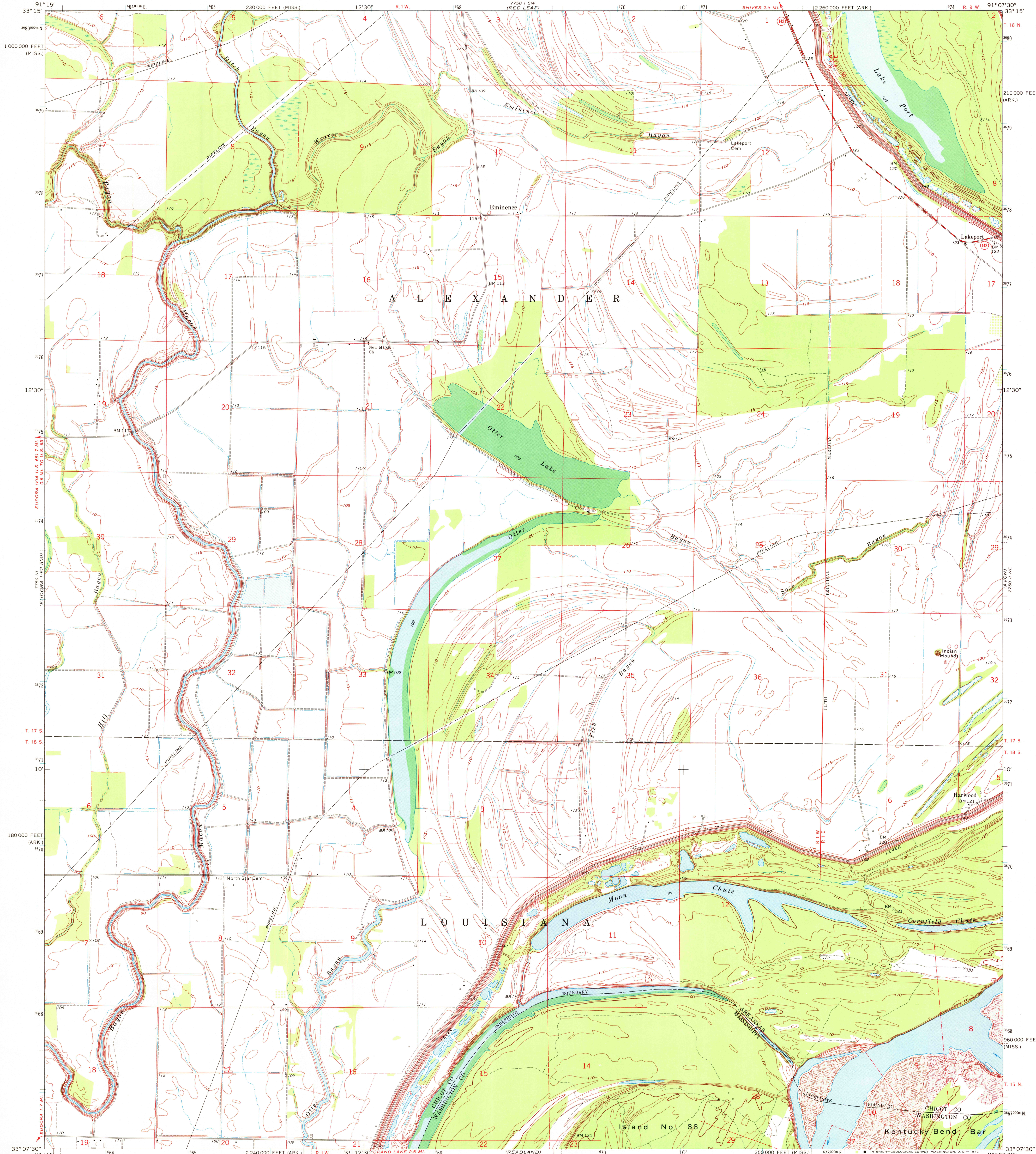


UNITED STATES
DEPARTMENT OF THE INTERIOR
GEOLOGICAL SURVEY

EMINENCE QUADRANGLE
ARKANSAS—MISSISSIPPI
7.5 MINUTE SERIES (TOPOGRAPHIC)
NW 1/4 READLAND 15' QUADRANGLE



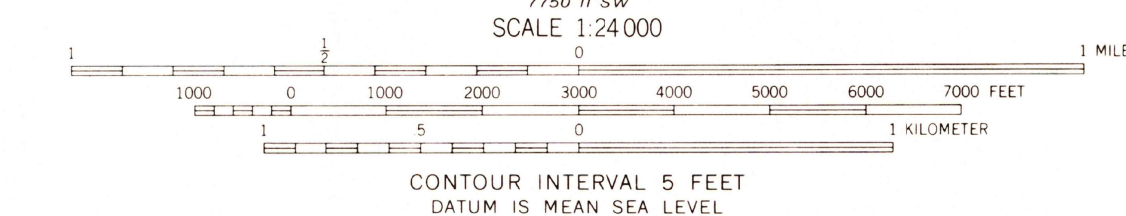
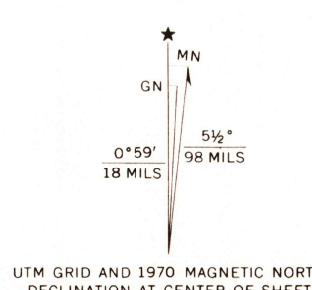
Mapped, edited, and published by the Geological Survey
Control by USGS, USC&GS, and USCE

Topography by photogrammetric methods from aerial
photographs taken 1967. Field checked 1970

Polyconic projection. 1927 North American datum
10,000-foot grids based on Arkansas coordinate system, south zone
and Mississippi coordinate system, west zone

1000-meter Universal Transverse Mercator grid ticks,
zone 15, shown in blue

Fine red dashed lines indicate selected fence and field lines where
generally visible on aerial photographs. This information is unchecked



THIS MAP COMPLIES WITH NATIONAL MAP ACCURACY STANDARDS
FOR SALE BY U.S. GEOLOGICAL SURVEY, DENVER, COLORADO 80225, OR WASHINGTON, D.C. 20242
AND BY THE ARKANSAS GEOLOGICAL COMMISSION, LITTLE ROCK, ARKANSAS 72201
A FOLDER DESCRIBING TOPOGRAPHIC MAPS AND SYMBOLS IS AVAILABLE ON REQUEST



ROAD CLASSIFICATION
Secondary highway, all weather, Light duty road, all weather,
hard surface
Unimproved road, fair or dry
weather

State Route

EMINENCE, ARK.—MISS.

NW 1/4 READLAND 15' QUADRANGLE
N3307.5—W9107.5/7.5

1970
AMS 7750 II NW—SERIES V884

MAR 28 1972

USGS
HISTORICAL FILE
TOPOGRAPHIC DIVISION