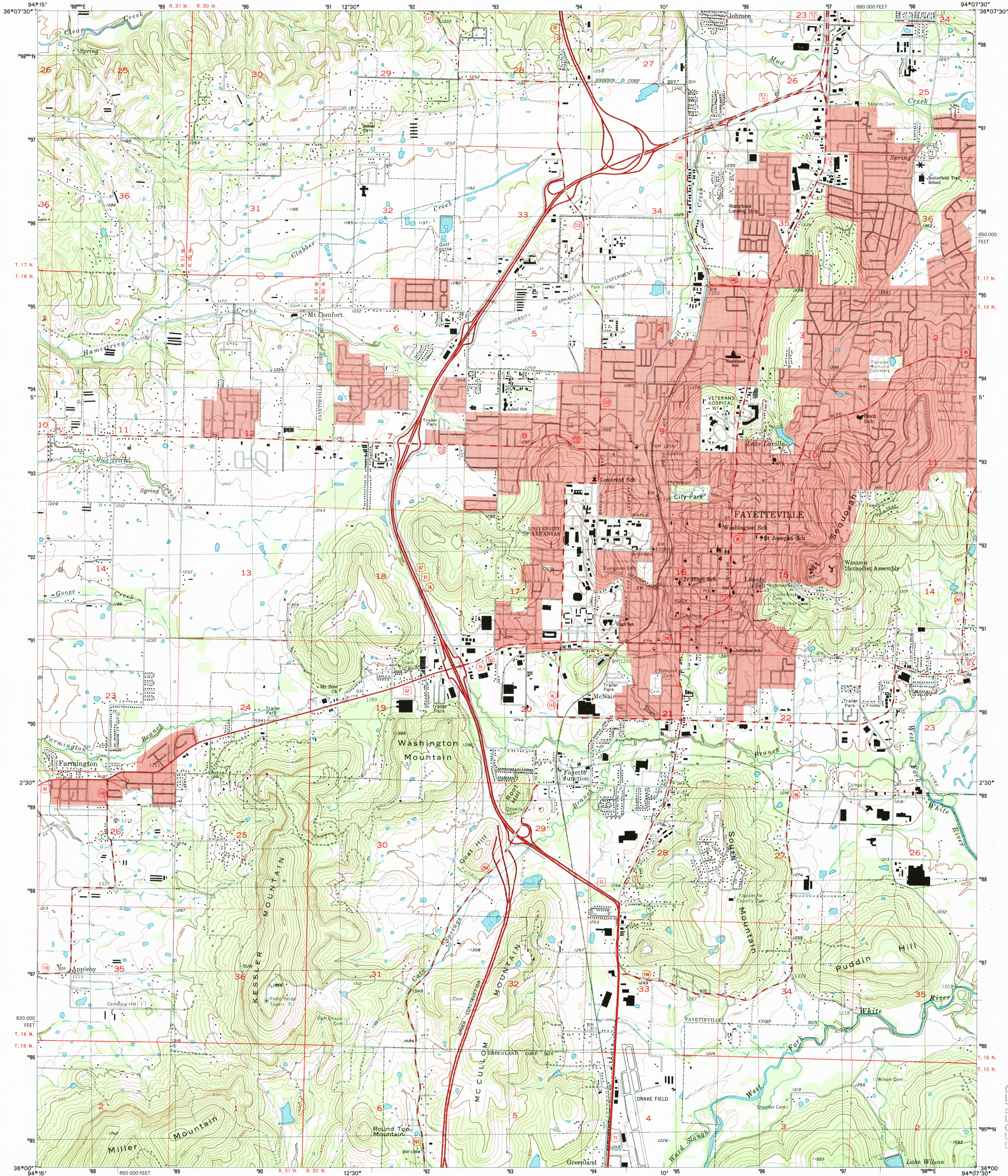
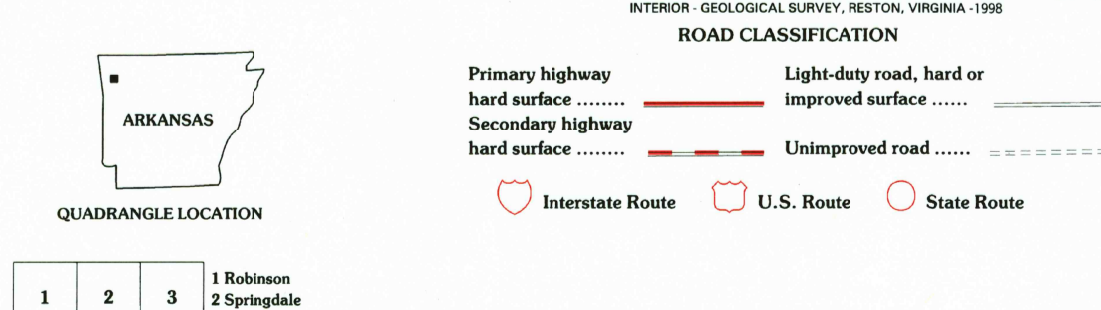
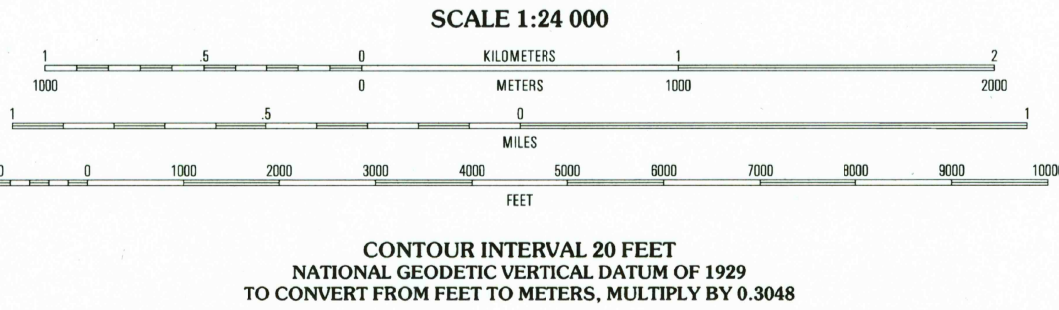
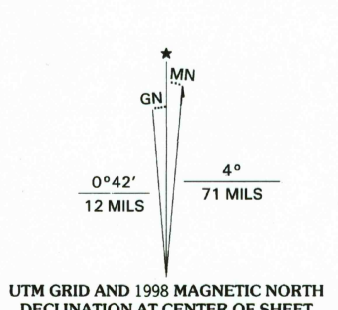


UNITED STATES
DEPARTMENT OF THE INTERIOR
GEOLOGICAL SURVEY

FAYETTEVILLE QUADRANGLE
ARKANSAS-WASHINGTON CO.
7.5-MINUTE SERIES (TOPOGRAPHIC)



Produced by the United States Geological Survey
Topography compiled 1957. Planimetry derived from imagery
taken 1994. Public Land Survey System and survey control
current as of 1958.
North American Datum of 1983 (NAD 83). Projection and
1 000-meter grid: Universal Transverse Mercator, zone 15
10 000-foot ticks: Arkansas Coordinate System of 1983
(north zone).
North American Datum of 1927 (NAD 27) is shown by dashed
corner ticks. The values of the shift between NAD 83 and NAD 27
for 7.5-minute intersections are obtainable from National Geodetic
Survey NADCON software.
Landmark buildings verified 1958.



THIS MAP COMPLIES WITH NATIONAL MAP ACCURACY STANDARDS
FOR SALE BY U.S. GEOLOGICAL SURVEY, P.O. BOX 25286, DENVER, COLORADO 80225
AND ARKANSAS GEOLOGICAL COMMISSION, LITTLE ROCK, ARKANSAS 72204
A FOLDER DESCRIBING TOPOGRAPHIC MAPS AND SYMBOLS IS AVAILABLE ON REQUEST

FAYETTEVILLE, AR
1995
DMA 7156 II SW-SERIES V884

RECEIVED
JUN 3 1 2000
USGS INFO
NATIONAL MAP ARCHIVES
9 780607 876987
ISBN 0-607-87698-0