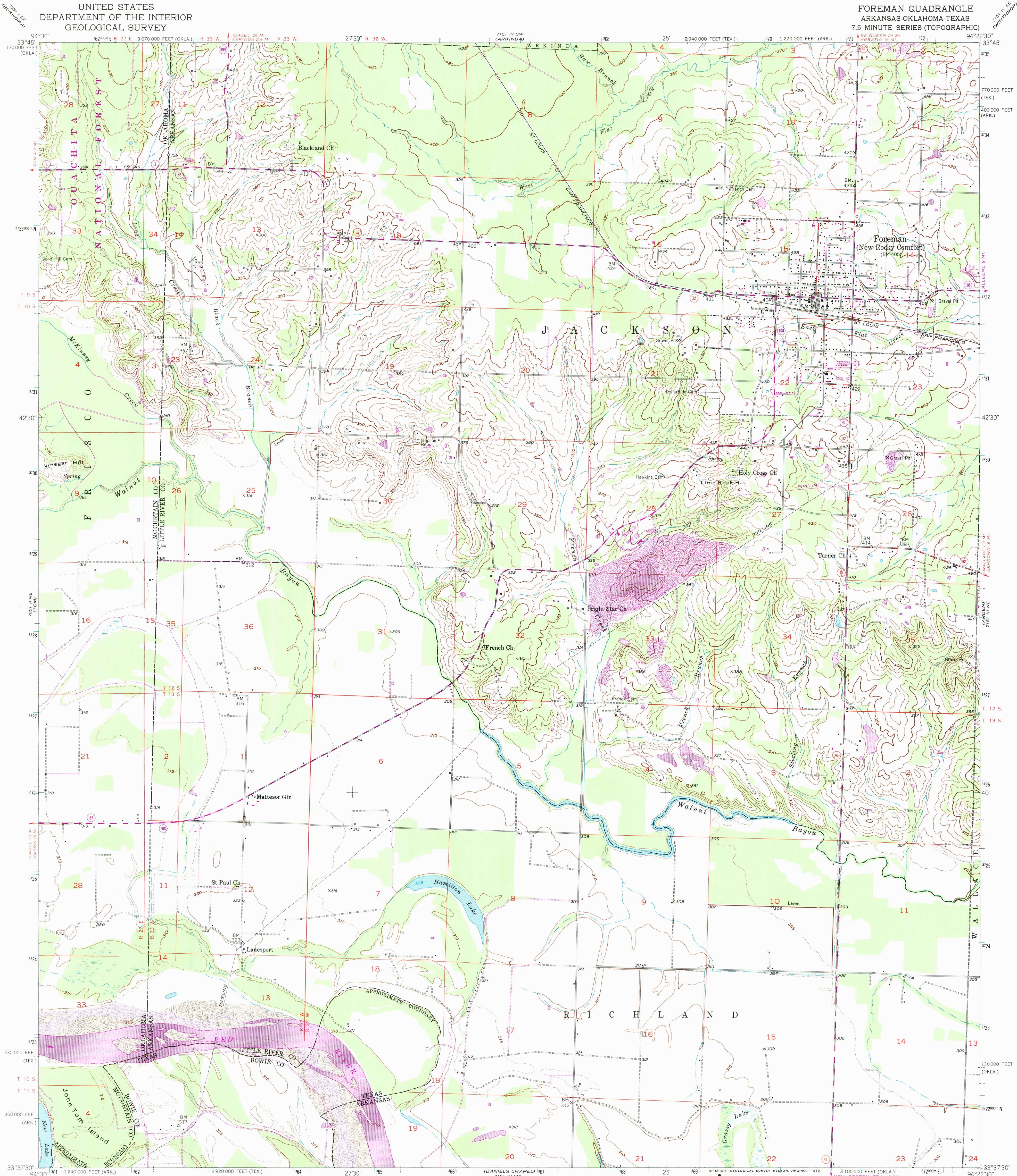


UNITED STATES
DEPARTMENT OF THE INTERIOR
GEOLOGICAL SURVEY

FOREMAN QUADRANGLE
ARKANSAS-OKLAHOMA-TEXAS
7.5 MINUTE SERIES (TOPOGRAPHIC)



Mapped, edited, and published by the Geological Survey

Control by USGS, USC&GS, and USCE

Culture and drainage in part compiled from
aerial photographs taken 1949
Topography by plane table methods 1949-1951

Polyconic projection. 1927 North American datum
10,000-foot grids based on Arkansas coordinate system,
south zone, Oklahoma coordinate system, south zone,
and Texas coordinate system, north central zone
1000-metre Universal Transverse Mercator grid ticks,
zone 15, shown in blue

Revisions shown in purple compiled from aerial photographs
taken 1975. This information not field checked

To place on the predicted North American Datum 1883,
move the projection lines 8 meters south and
19 meters east as shown by dashed corner ticks

There may be private inholdings within the boundaries of
the National or State reservations shown on this map

SCALE 1:24 000

CONTOUR INTERVAL 10 FEET
DOTTED LINES REPRESENT 5-FOOT CONTOURS
NATIONAL GEODETIC VERTICAL DATUM OF 1929

THIS MAP COMPLIES WITH NATIONAL MAP ACCURACY STANDARDS
FOR SALE BY U. S. GEOLOGICAL SURVEY, DENVER, COLORADO 80225, OR RESTON, VIRGINIA 22092,
ARKANSAS GEOLOGICAL COMMISSION, LITTLE ROCK, ARKANSAS 72204,
AND OKLAHOMA GEOLOGICAL SURVEY, NORMAN, OKLAHOMA 73069
A FOLDER DESCRIBING TOPOGRAPHIC MAPS AND SYMBOLS IS AVAILABLE ON REQUEST



QUADRANGLE LOCATION

ROAD CLASSIFICATION
Heavy-duty Light-duty
Medium-duty Unimproved dirt
U. S. Route State Route

RETURN TO:
NHD HISTORICAL MAP ARCHIVES
USGS NATIONAL CENTER, MS-522
RESTON, VA 22092

FOREMAN, ARK.-OKLA.-TEX.
N3337.5-W9422.5/7.5

1951
PHOTOREVISED 1975
AMS 7151 III NW-SERIES V884