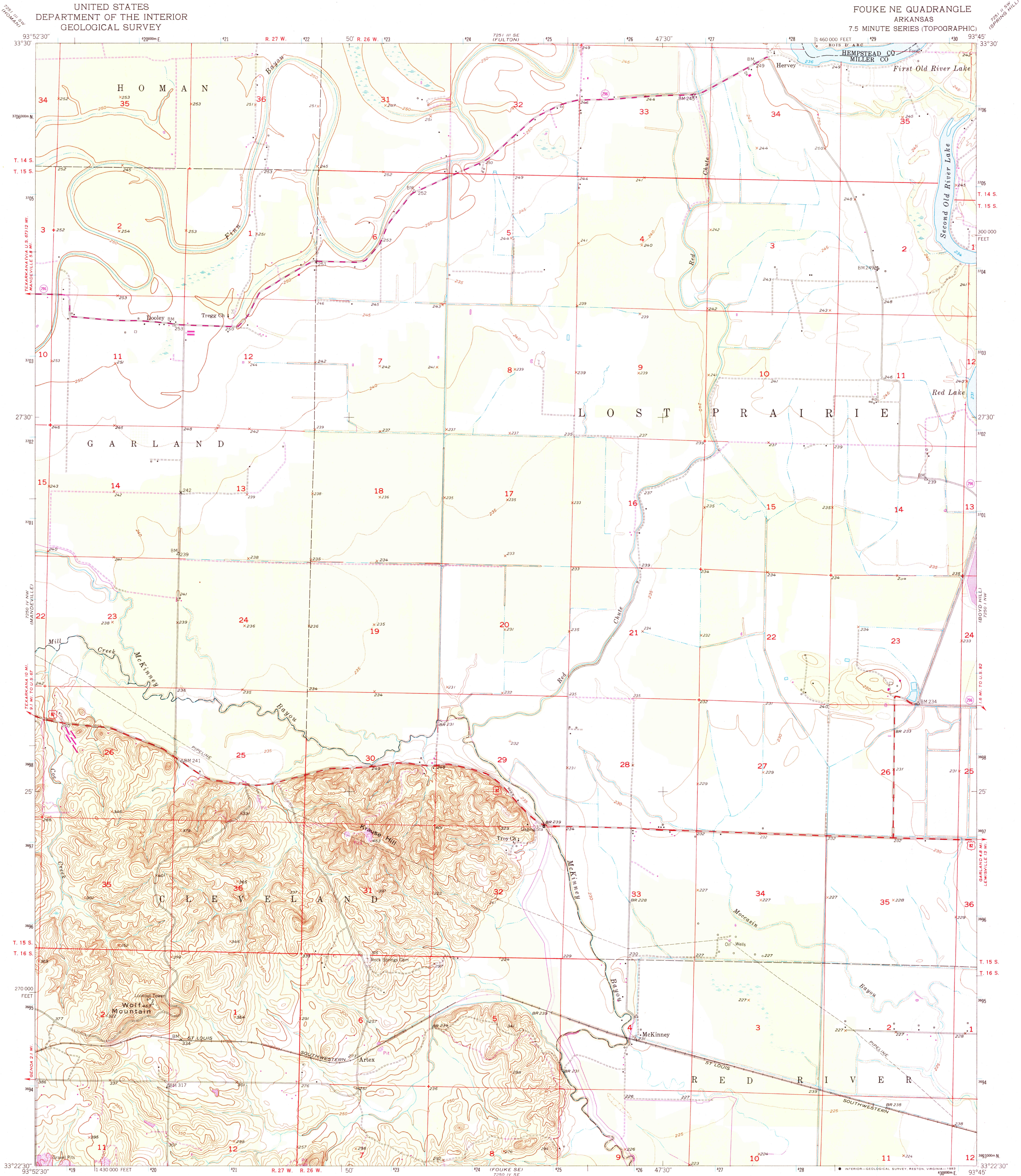


UNITED STATES
DEPARTMENT OF THE INTERIOR
GEOLOGICAL SURVEY

FOUKE NE QUADRANGLE
ARKANSAS
7.5 MINUTE SERIES (TOPOGRAPHIC)



Mapped, edited, and published by the Geological Survey

Control by USGS, USC&GS, and USCE

Culture and drainage in part compiled from aerial photographs taken 1949. Topography by plane-table surveys 1951-1952

Polyconic projection. 1927 North American datum 10,000-foot grid based on Arkansas coordinate system, south zone

1000-metre Universal Transverse Mercator grid ticks, zone 15, shown in blue

Revisions shown in purple compiled from aerial photographs taken 1975. This information not field checked

To place on the predicted North American Datum 1983 move the projection lines 10 meters south and 18 meters east as shown by dashed corner ticks

THIS MAP COMPLIES WITH NATIONAL MAP ACCURACY STANDARDS
FOR SALE BY U. S. GEOLOGICAL SURVEY, DENVER, COLORADO 80225, OR RESTON, VIRGINIA 22092
AND ARKANSAS GEOLOGICAL COMMISSION, LITTLE ROCK, ARKANSAS 72204
A FOLDER DESCRIBING TOPOGRAPHIC MAPS AND SYMBOLS IS AVAILABLE ON REQUEST

ROAD CLASSIFICATION
Heavy-duty 4 LANE 16 LANE Light-duty
Medium-duty 4 LANE 16 LANE Unimproved dirt
U. S. Route State Route

FOUKE NE, ARK.
N3322.5-W9345/7.5

1952
PHOTOREVISED 1975
AMS 7250 IV NE-SERIES V884

JAN 27 1983

1500