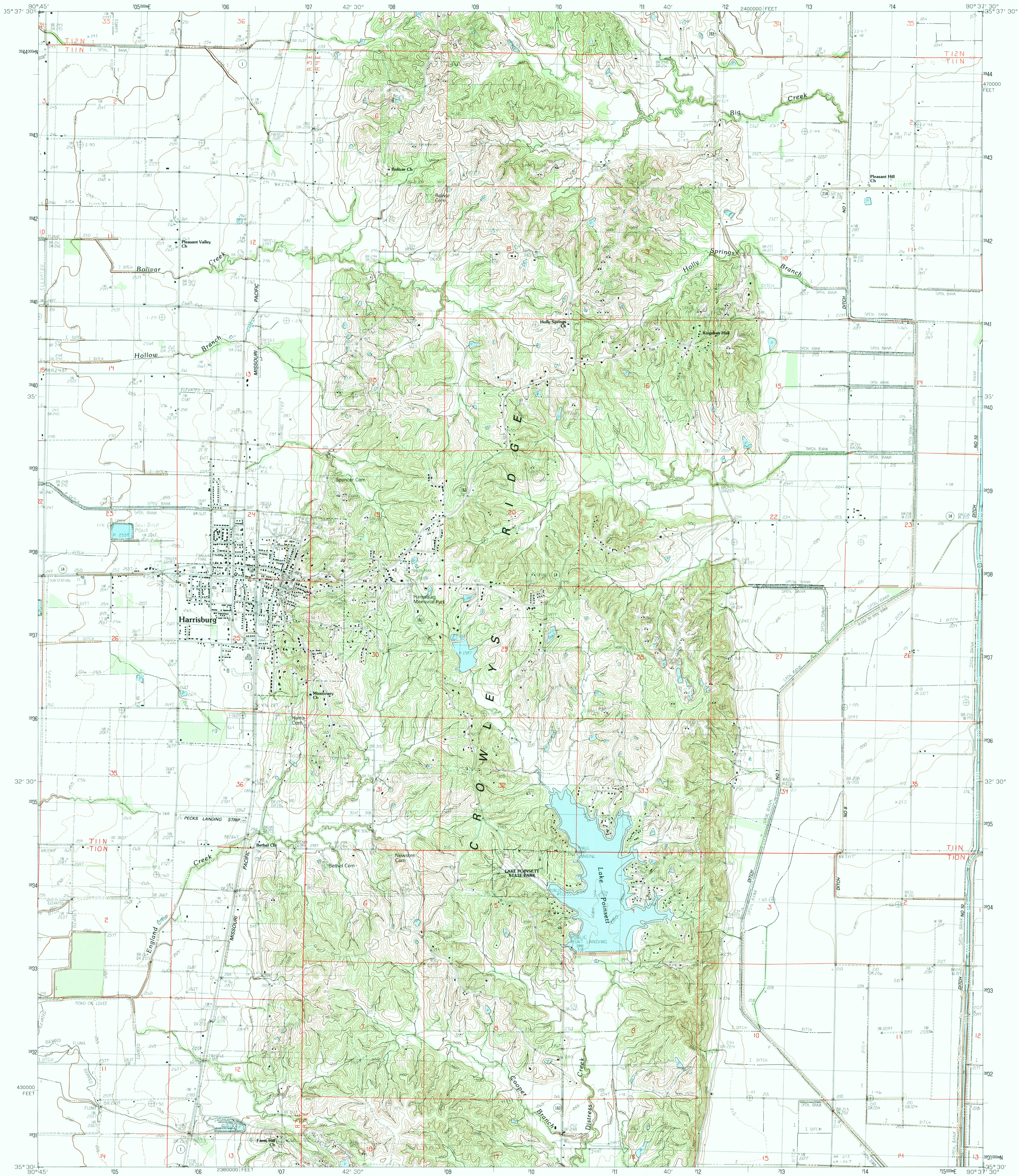


UNITED STATES
DEPARTMENT OF THE INTERIOR
GEOLOGICAL SURVEY

HARRISBURG QUADRANGLE
ARKANSAS-POINSETT CO.
7.5 MINUTE SERIES (TOPOGRAPHIC)



PRODUCED BY THE UNITED STATES GEOLOGICAL SURVEY
CONTROL BY THE UNITED STATES GEOLOGICAL SURVEY
COMPILED FROM AERIAL PHOTOGRAPHS TAKEN 1976
FIELD CHECKED 1979. MAP EDITED 1983
PROJECTION LAMBERT CONFORMAL CONIC
GRID: 1000-METER UNIVERSAL TRANSVERSE MERCATOR ZONE 15
10,000-FOOT STATE GRID TICKS ARKANSAS, NORTH ZONE
UTM GRID DECLINATION 1°21' EAST
1983 MAGNETIC NORTH DECLINATION 3°30' EAST
VERTICAL DATUM NATIONAL GEODETIC VERTICAL DATUM OF 1929
HORIZONTAL DATUM 1927 NORTH AMERICAN DATUM
To place on the predicted North American Datum of 1983
move the projection lines as shown by dashed corner ticks
(6 meters south and 10 meters east)
There may be private inholdings within the boundaries of any
Federal and State reservations shown on this map

PROVISIONAL MAP
Produced from original
manuscript drawings. Information
shown as of date of
field check.

SCALE 1:24 000
1 0 1000 2000 3000 4000 5000 6000 7000 8000 9000 10 000
1 0 1000 2000 3000 4000 5000 6000 7000 8000 9000 10 000
CONTOUR INTERVAL 10 FEET
SUPPLEMENTARY CONTOUR INTERVAL 5 FEET
CONTOUR INTERVAL IN LAKE POINSETT 20 FEET
To convert feet to meters multiply by .3048
To convert meters to feet multiply by 3.2808
THIS MAP COMPLIES WITH NATIONAL MAP ACCURACY STANDARDS
FOR SALE BY U. S. GEOLOGICAL SURVEY, DENVER, COLORADO 80225, OR RESTON, VIRGINIA 22092
AND ARKANSAS GEOLOGICAL COMMISSION, LITTLE ROCK, ARKANSAS 72204

QUADRANGLE LOCATION

1	2	3	1 Otwell
4	5	6	2 Greenfield
7	8	9	3 Trumman
			4 Powers Slough
			5 McCormick
			6 Cherry Valley West
			7 Cherry Valley East
			8 Monterey

ADJOINING 7.5 QUADRANGLE NAMES

ROAD LEGEND
Improved Road
Unimproved Road
Trail
Interstate Route
U. S. Route
State Route

HARRISBURG, ARKANSAS
PROVISIONAL EDITION 1983

35090-E6-TF-024