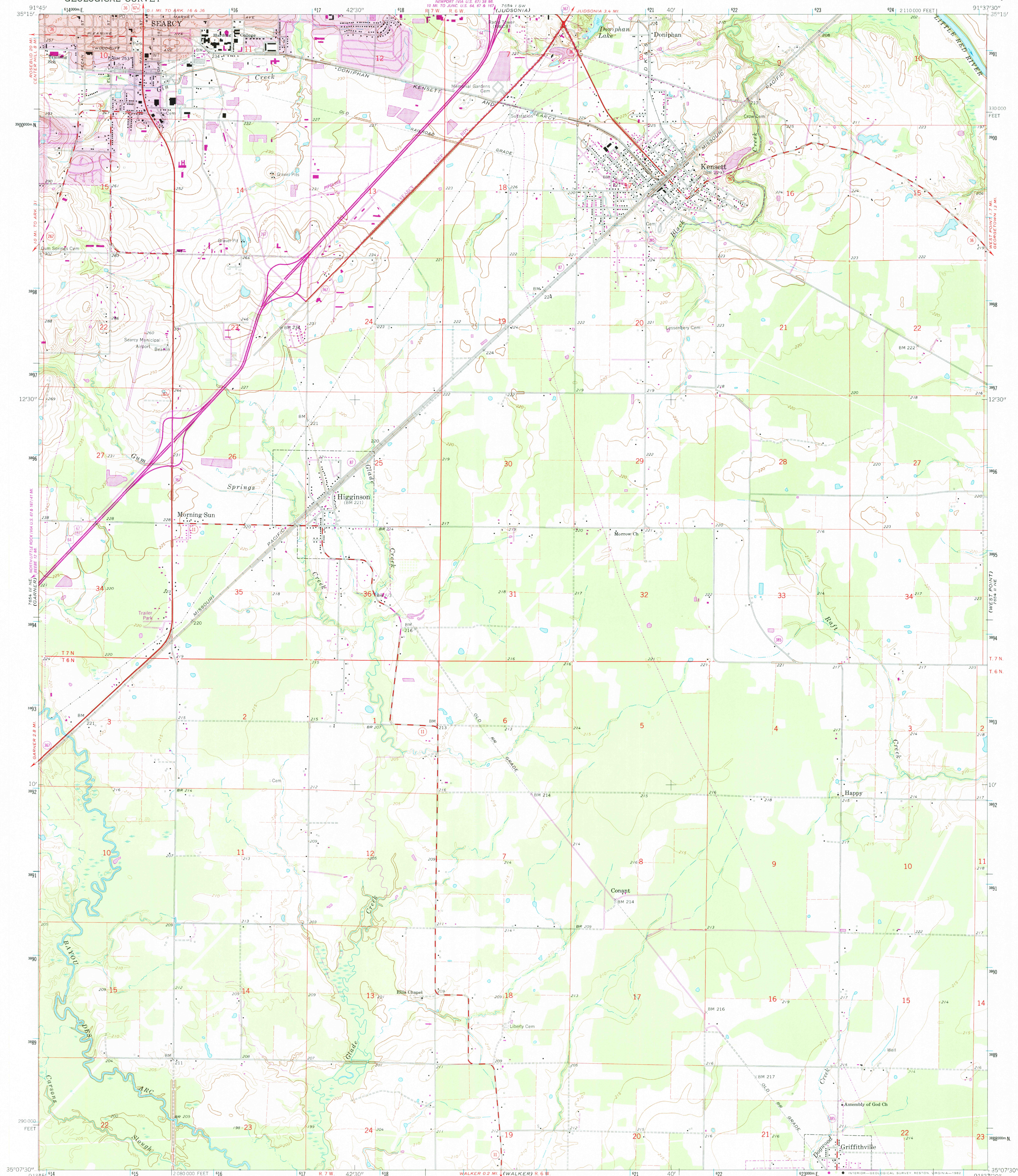


Zone IV SE  
(LEPONA)

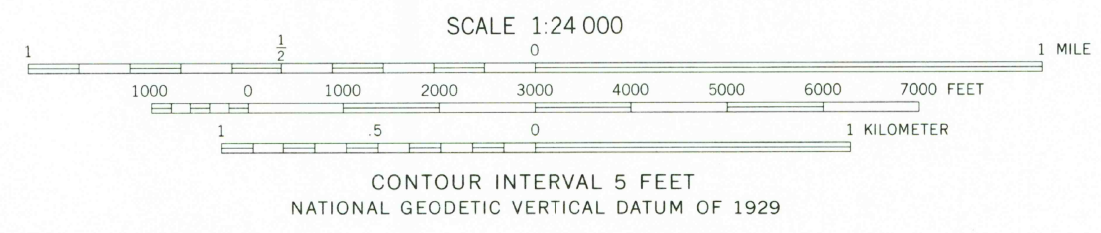
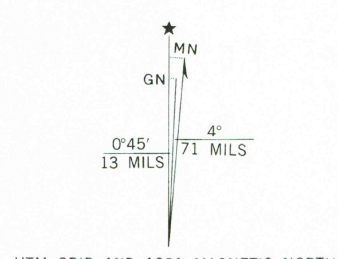
UNITED STATES  
DEPARTMENT OF THE INTERIOR  
GEOLOGICAL SURVEY

KENSETT QUADRANGLE  
ARKANSAS—WHITE CO.  
7.5 MINUTE SERIES (TOPOGRAPHIC)

Zone IV SE  
(LEPONA)



Mapped, edited, and published by the Geological Survey  
Control by USGS and USC&GS  
Planimetry by photogrammetric methods from aerial photographs  
taken 1963. Topography by planetable surveys 1964  
Polyconic projection. 1927 North American datum  
10,000-foot grid based on Arkansas coordinate system, north zone  
1000-meter Universal Transverse Mercator grid ticks,  
zone 15, shown in blue  
Red tint indicates area in which only landmark buildings are shown  
To place on the predicted North American Datum 1983  
move the projection lines 7 meters south and  
12 meters east as shown by dashed corner ticks  
Revisions shown in purple compiled from aerial photographs taken  
1980. Map edited 1981. This information not field checked  
Purple tint indicates extension of urban area



ROAD CLASSIFICATION  
Heavy-duty ——— Light-duty ———  
Medium-duty ——— Unimproved dirt ———  
U. S. Route —○— State Route —○—

KENSETT, ARK.  
N3507.5—W9137.5/7.5  
1964  
PHOTOREVISED 1981  
DMA 7654 II NW—SERIES V884

APR 15 1982

210