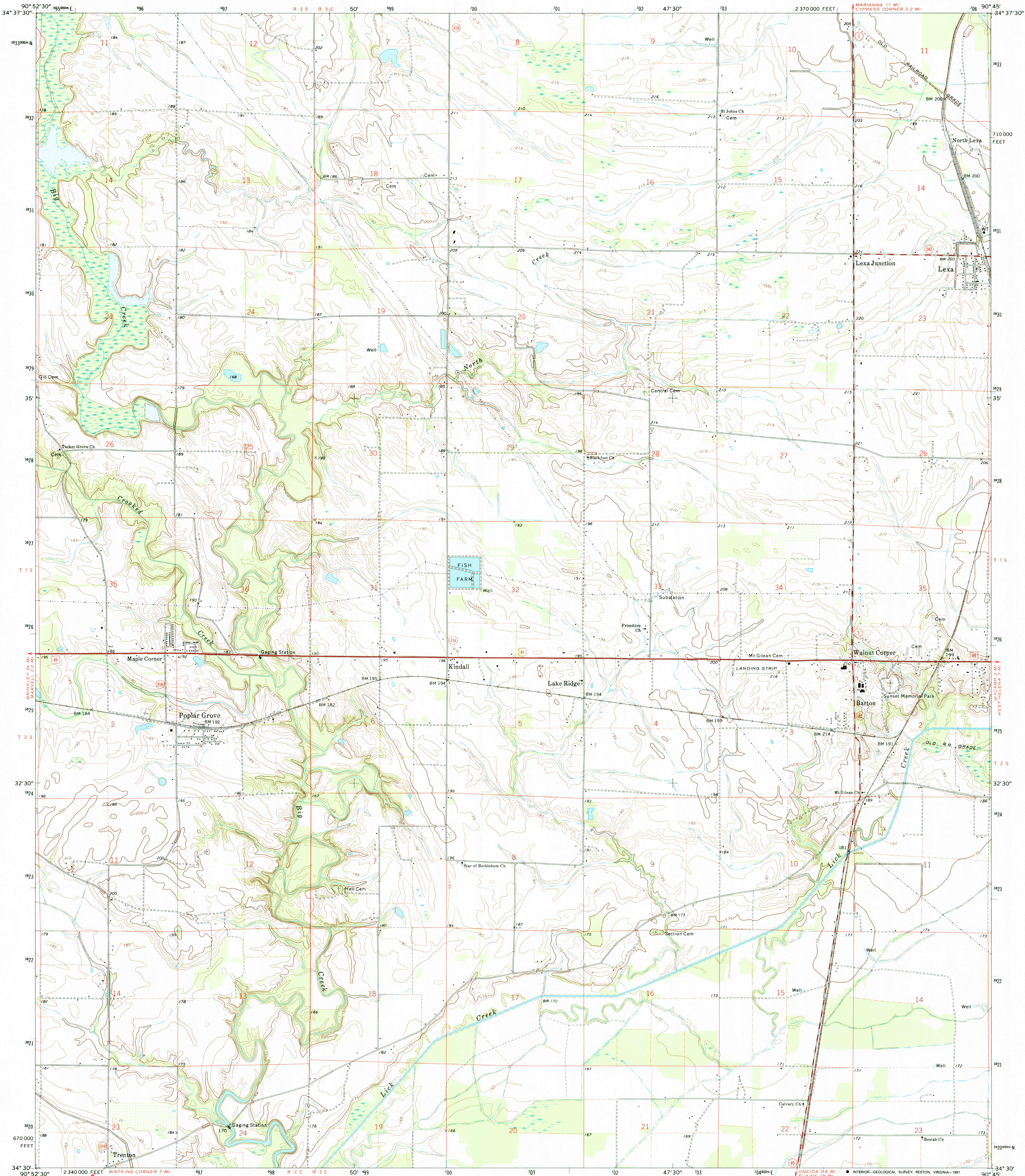
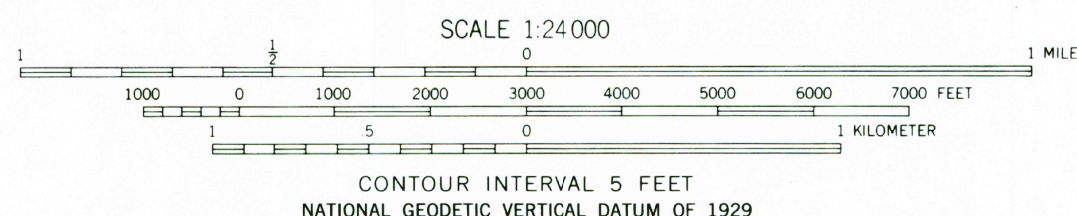
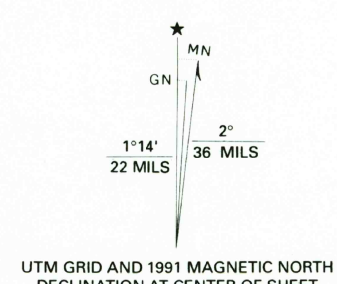


UNITED STATES  
DEPARTMENT OF THE INTERIOR  
GEOLOGICAL SURVEY

LEXA QUADRANGLE  
ARKANSAS—PHILLIPS CO.  
7.5 MINUTE SERIES (TOPOGRAPHIC)



Produced by the United States Geological Survey  
Control by USGS and NOS/NOAA  
Topography by photogrammetric methods from aerial photographs  
taken 1970. Field checked 1971.  
Projection and 10,000-foot grid ticks: Arkansas coordinate  
system, south zone (Lambert conformal conic)  
1000-meter Universal Transverse Mercator grid ticks, zone 15, shown in blue  
1927 North American Datum (NAD 27)  
North American Datum of 1983 (NAD 83) is shown by dashed corner ticks  
The values of the shift between NAD 27 and NAD 83 for 7.5-minute  
intersections are given in USGS Bulletin 1875  
Fine red dashed lines indicate selected fence and field lines where  
generally visible on aerial photographs. This information is unchecked  
Photosinspected from 1988 source; no major culture or drainage  
changes observed. Names revised and boundaries verified 1991



QUADRANGLE LOCATION

1	2	3
4	5	6
7	8	9

ADJOINING 7.5' QUADRANGLE NAMES

1 Aubrey
2 Rondo
3 LaGrange
4 Marvell
5 West Helena
6 Watkins Corner
7 Lakeview
8 Friars Point NW

ROAD CLASSIFICATION

Primary highway, hard surface ——— Light-duty road, hard or improved surface ———  
Secondary highway, hard surface ——— Unimproved road ———  
Interstate Route ——— U. S. Route ——— State Route ———



LEXA, ARK.  
SE 1/4 MARVELL 15' QUADRANGLE  
34090-E7-TF-024  
1971  
MINOR REVISION 1991  
DMA 7853 III SE—SERIES V884

THIS MAP COMPLIES WITH NATIONAL MAP ACCURACY STANDARDS  
FOR SALE BY U.S. GEOLOGICAL SURVEY, DENVER, COLORADO 80225, OR RESTON, VIRGINIA 22092  
AND ARKANSAS GEOLOGICAL COMMISSION, LITTLE ROCK, ARKANSAS 72204  
A FOLDER DESCRIBING TOPOGRAPHIC MAPS AND SYMBOLS IS AVAILABLE ON REQUEST