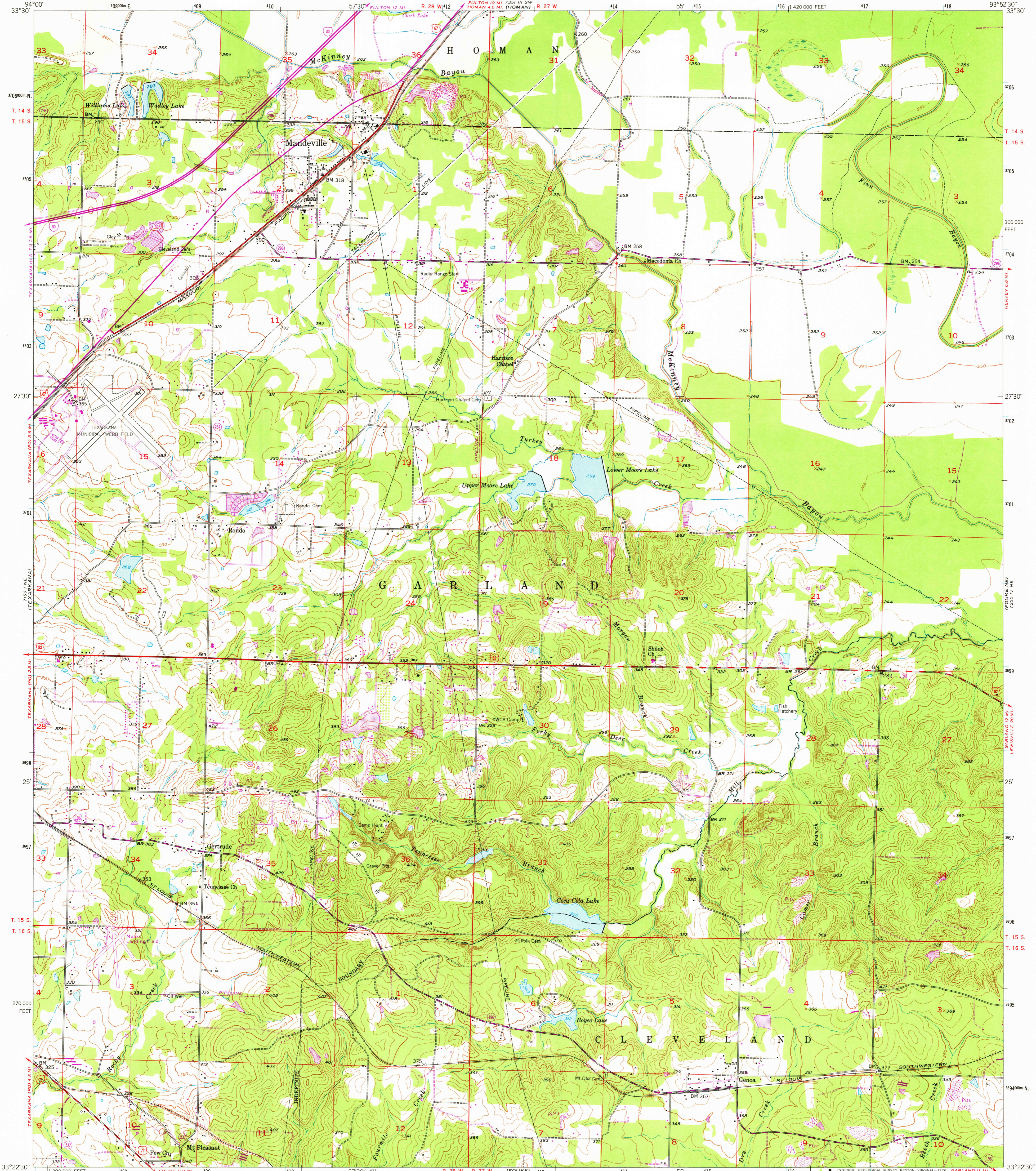


74° 15' E
(GODET)

UNITED STATES
DEPARTMENT OF THE INTERIOR
GEOLOGICAL SURVEY

MANDEVILLE QUADRANGLE
ARKANSAS-MILLER CO.
7.5 MINUTE SERIES (TOPOGRAPHIC)

72° 11' SE
(FULTON)



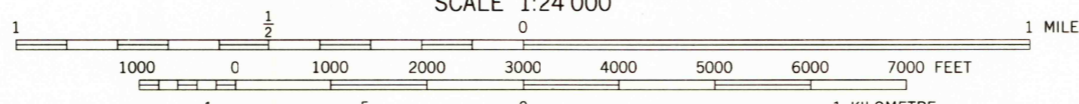
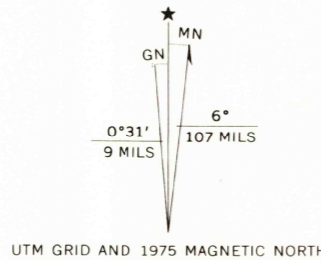
Mapped, edited, and published by the Geological Survey

Control by USGS, USC&GS, and USCE

Culture and drainage in part compiled from aerial photographs taken 1949. Topography by plane-table surveys 1951-1952

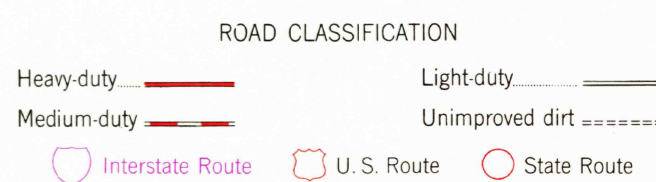
Polyconic projection. 1927 North American datum 10,000-foot grid based on Arkansas coordinate system, south zone 1000-metre Universal Transverse Mercator grid ticks, zone 15, shown in blue

Revisions shown in purple compiled from aerial photographs taken 1970 and 1975. This information not field checked



CONTOUR INTERVAL 10 FEET
DOTTED LINES REPRESENT 5-FOOT CONTOURS
NATIONAL GEODETIC VERTICAL DATUM OF 1929

THIS MAP COMPLIES WITH NATIONAL MAP ACCURACY STANDARDS
FOR SALE BY U. S. GEOLOGICAL SURVEY, DENVER, COLORADO 80225, OR RESTON, VIRGINIA 22092
AND ARKANSAS GEOLOGICAL COMMISSION, LITTLE ROCK, ARKANSAS 72204
A FOLDER DESCRIBING TOPOGRAPHIC MAPS AND SYMBOLS IS AVAILABLE ON REQUEST



USGS
Historical File
Topographic Division
1952
PHOTOREVISED 1970 AND 1975
AMS 7250 IV NW-SERIES V864

MANDEVILLE, ARK.
N3322.5-W9352.5/7.5

AUG 27 1976