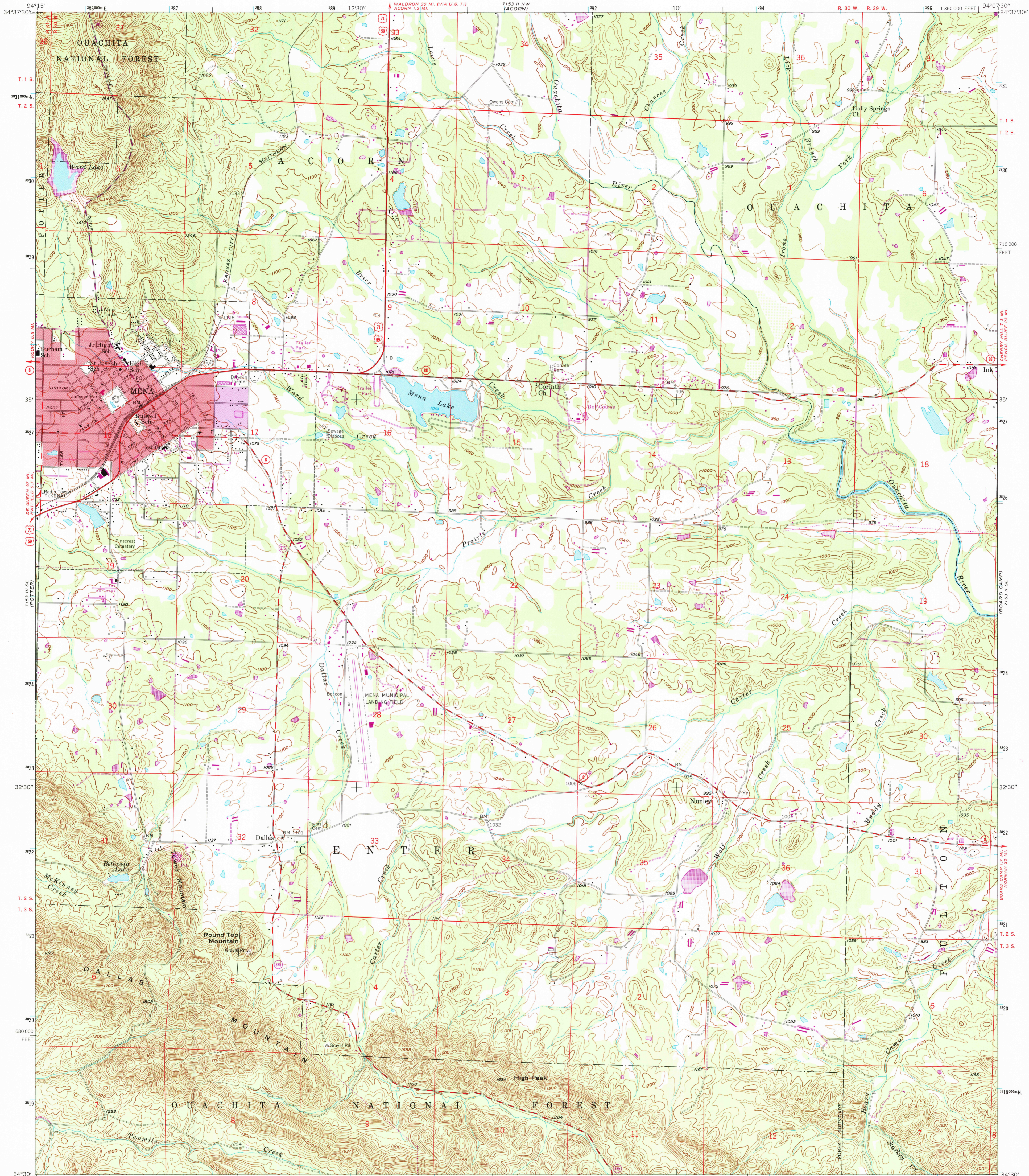


UNITED STATES  
DEPARTMENT OF THE INTERIOR  
GEOLOGICAL SURVEY

MENA QUADRANGLE  
ARKANSAS—POLK CO.  
7.5 MINUTE SERIES (TOPOGRAPHIC)  
SW 4 MENA 15' QUADRANGLE



Mapped, edited, and published by the Geological Survey

Control by USGS and USC&GS

Topography from aerial photographs by multiplex methods  
Aerial photographs taken 1955. Field check 1958

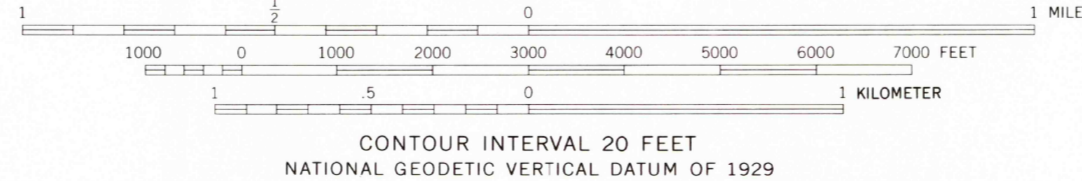
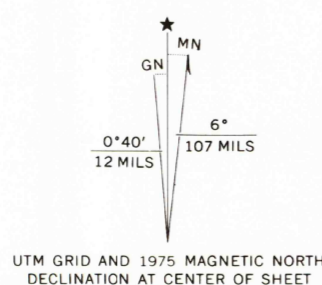
Polyconic projection. 1927 North American Datum  
10,000-foot grid based on Arkansas coordinate system, south zone  
1000-meter Universal Transverse Mercator grid ticks,  
zone 15, shown in blue

To place on the predicted North American Datum 1983,  
move the projection lines 7 meters south and  
18 meters east as shown by dashed corner ticks

There may be private inholdings within the boundaries of  
the National or State reservations shown on this map

Red tint indicates areas in which only landmark buildings are shown

Unchecked elevations are shown in brown



THIS MAP COMPLIES WITH NATIONAL MAP ACCURACY STANDARDS  
FOR SALE BY U. S. GEOLOGICAL SURVEY, DENVER, COLORADO 80225, OR RESTON, VIRGINIA 22092  
AND ARKANSAS GEOLOGICAL COMMISSION, LITTLE ROCK, ARKANSAS 72204  
A FOLDER DESCRIBING TOPOGRAPHIC MAPS AND SYMBOLS IS AVAILABLE ON REQUEST



QUADRANGLE LOCATION

Revisions shown in purple compiled from aerial photographs  
taken 1975. This information not field checked  
Purple tint indicates extensions of urban areas

ROAD CLASSIFICATION			
Heavy-duty	Light-duty	U.S. Route	State Route
Medium-duty	Unimproved dirt		

MENA, ARK.  
SW 4 MENA 15' QUADRANGLE  
N 3430—W 9407.5/7.5

1958  
PHOTOREVISED 1975  
AMS 7153 II SW—SERIES V884

8/29/84