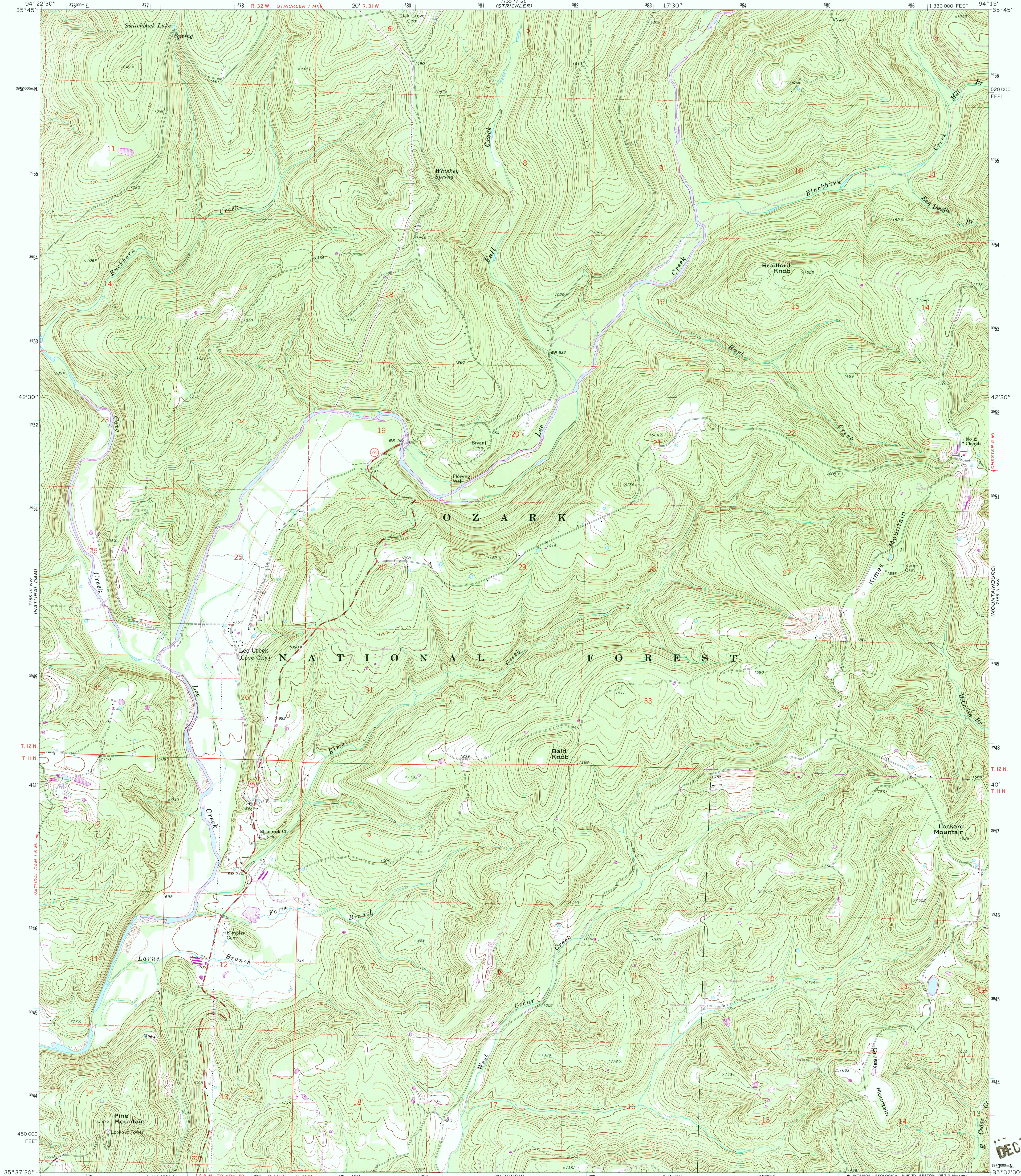
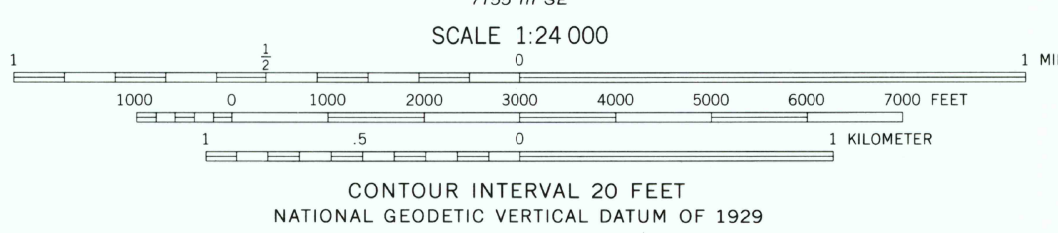
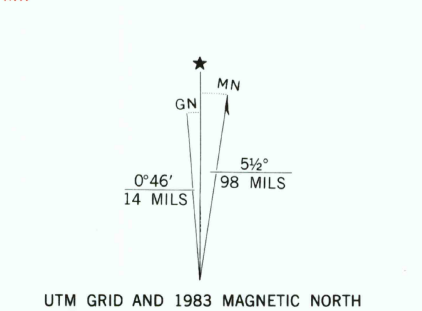


UNITED STATES
DEPARTMENT OF THE INTERIOR
GEOLOGICAL SURVEY

RUDY NE QUADRANGLE
ARKANSAS—CRAWFORD CO.
7.5 MINUTE SERIES (TOPOGRAPHIC)



Maped, edited, and published by the Geological Survey
Control by USGS and USC&GS
Topography by photogrammetric methods from aerial
photographs taken 1967. Field checked 1970.
Polyconic projection. 1927 North American datum
10,000-foot grid based on Arkansas coordinate system, north zone
1000-meter Universal Transverse Mercator grid ticks,
zone 15, shown in blue
To place on the predicted North American Datum 1983
move the projection lines 6 meters south and
18 meters east as shown by dashed corner ticks
There may be private inholdings within the boundaries of
the National or State reservations shown on this map
Revisions shown in purple and woodland compiled in cooperation with
U. S. Forest Service from aerial photographs taken 1980 and other sources
Partially field checked by U. S. Forest Service. Map edited 1983



ROAD CLASSIFICATION
Secondary highway, all weather, Light-duty road, all weather,
hard surface
Unimproved road, fair or dry
weather
State Route

RUDY NE, ARK.
N3537.5—W9415/7.5
1970
PHOTOREVISED 1983
DMA 7155 III NE—SERIES Y884