

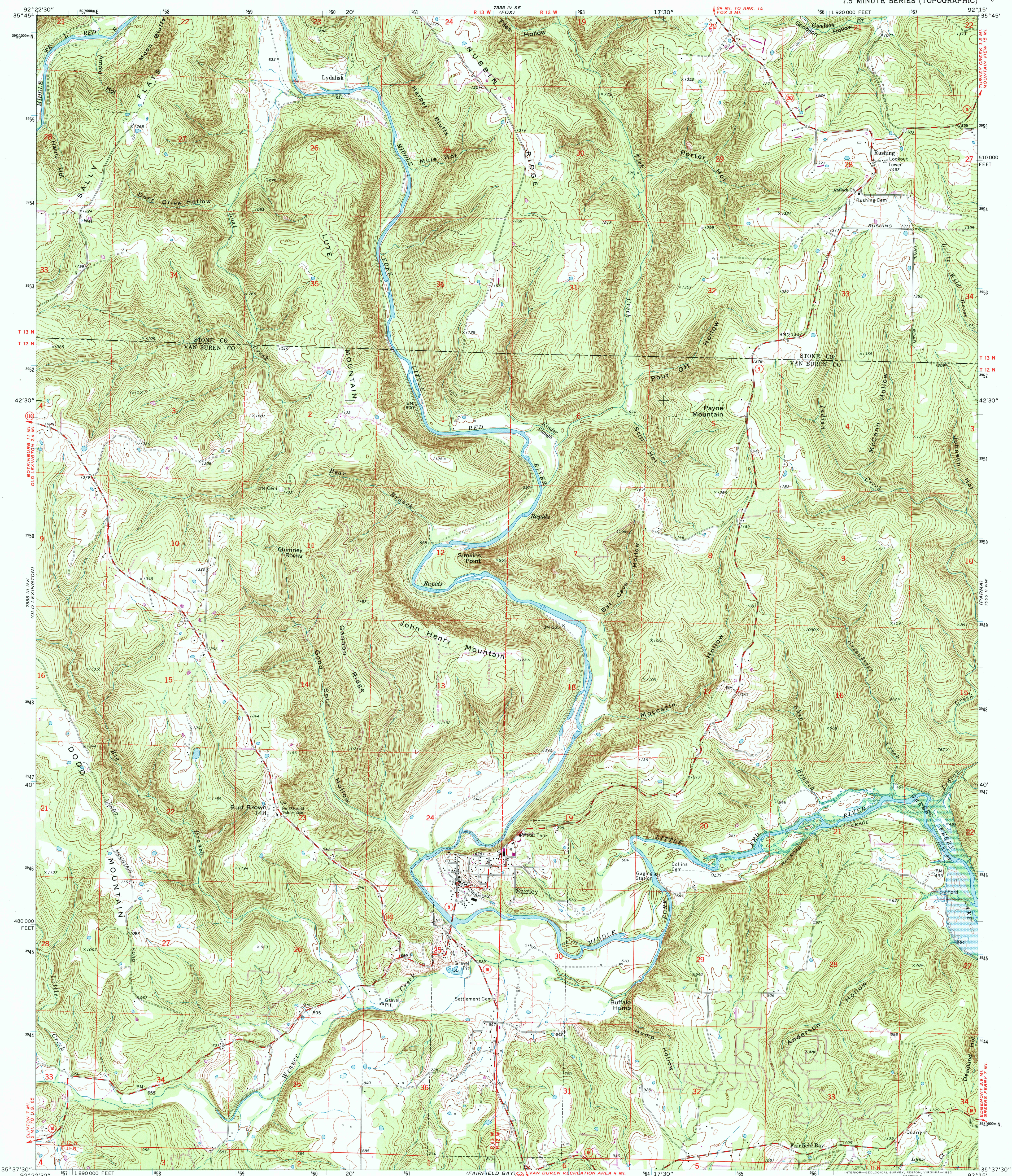
7555 IV SE  
(FOX)



U.S. DEPARTMENT OF THE INTERIOR  
U.S. GEOLOGICAL SURVEY

SHIRLEY QUADRANGLE  
ARKANSAS  
7.5 MINUTE SERIES (TOPOGRAPHIC)

7555 IV SW  
(MOUNTAIN VIEW SW)



Mapped, edited, and published by the Geological Survey

Control by USGS and NOS/NOAA

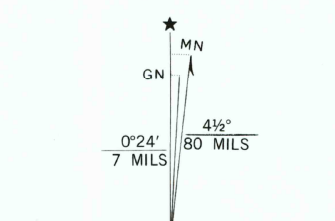
Topography by photogrammetric methods from aerial photographs taken 1972. Field checked 1973

Projection and 10,000-foot grid ticks: Arkansas coordinate system, north zone (Lambert conformal conic)  
1000-metre Universal Transverse Mercator grid ticks, zone 15, shown in blue. 1927 North American datum

Area covered by dashed light-blue pattern is subject to controlled inundation

Fine red dashed lines indicate selected fence and field lines where generally visible on aerial photographs. This information is unchecked

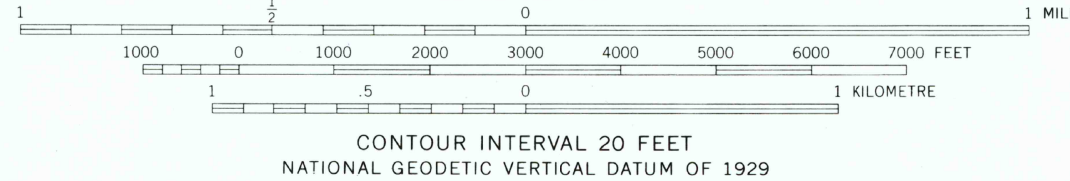
To place on the predicted North American Datum 1983 move the projection lines 5 meters south and 14 meters east as shown by dashed corner ticks



UTM GRID and 1981 MAGNETIC NORTH DECLINATION AT CENTER OF SHEET



28% TOTAL RECOVERED FIBER



CONTOUR INTERVAL 20 FEET  
NATIONAL GEODETIC VERTICAL DATUM OF 1929

THIS MAP COMPLIES WITH NATIONAL MAP ACCURACY STANDARDS  
FOR SALE BY U. S. GEOLOGICAL SURVEY, DENVER, COLORADO 80225, OR RESTON, VIRGINIA 22092  
AND BY THE ARKANSAS GEOLOGICAL COMMISSION, LITTLE ROCK, ARKANSAS 72204  
A FOLDER DESCRIBING TOPOGRAPHIC MAPS AND SYMBOLS IS AVAILABLE ON REQUEST



QUADRANGLE LOCATION

Revisions shown in purple compiled from aerial photographs taken 1980. Map edited 1981  
This information not field checked

ROAD CLASSIFICATION	
Primary highway, hard surface	Light-duty road, hard or improved surface
Secondary highway, hard surface	Unimproved road
Interstate Route	U. S. Route
	State Route

RECEIVED  
APR 30 2002

HISTORICAL MAP ARCHIVES

SHIRLEY, ARK.  
N3537.5—W9215/7.5

1973  
PHOTO-REVISED 1981  
DMA 7555 III NE-SERIES V884



1-1550-0545-1  
9 780607 059516