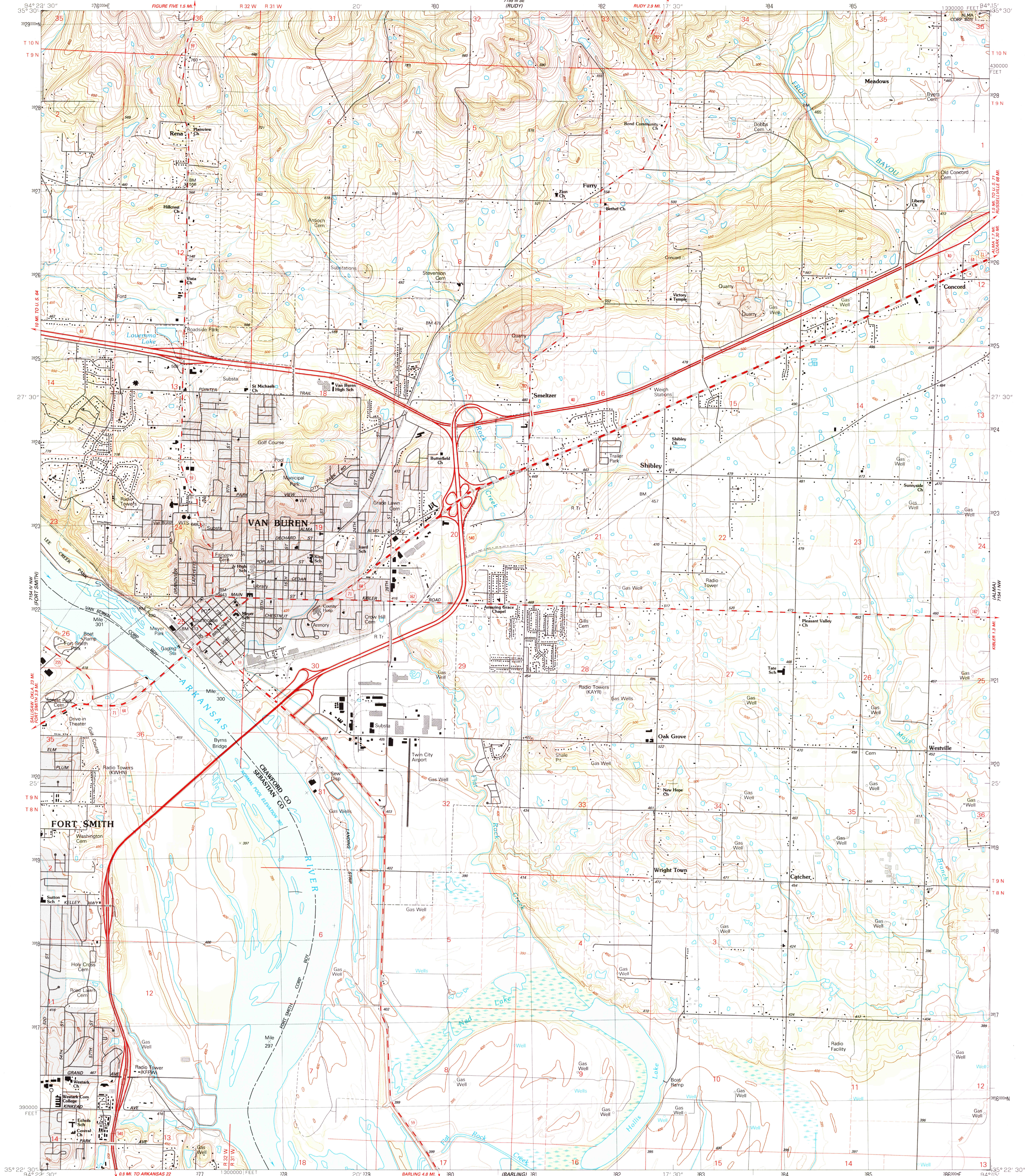


UNITED STATES
DEPARTMENT OF THE INTERIOR
GEOLOGICAL SURVEY

VAN BUREN QUADRANGLE
ARKANSAS
7.5 MINUTE SERIES (TOPOGRAPHIC)
NE-4 VAN BUREN 15' QUADRANGLE



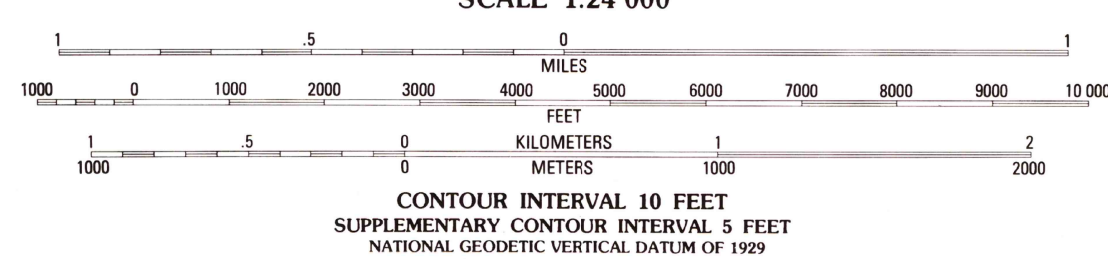
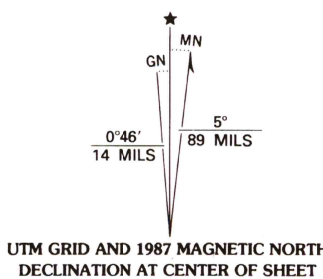
Produced by the United States Geological Survey
Control by USGS and NOS/NOAA

Topography by photogrammetric methods from aerial photographs
taken 1983. Field checked 1985. Map edited 1987
Supersedes Army Map Service map dated 1947

Projection and 10,000-foot grid ticks: Arkansas coordinate
system, north zone (Lambert conformal conic)
1000-meter Universal Transverse Mercator grid, zone 15
1927 North American Datum
To place on the predicted North American Datum 1983,
move the projection lines 6 meters south and
18 meters east as shown by dashed corner ticks

There may be private inholdings within the boundaries of
the National or State reservations shown on this map

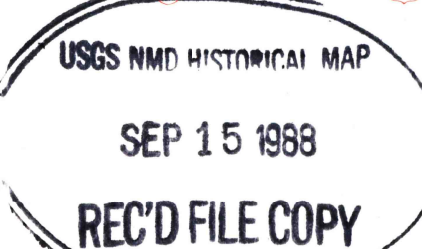
Gray tint indicates areas in which only landmark buildings are shown



THIS MAP COMPLIES WITH NATIONAL MAP ACCURACY STANDARDS
FOR SALE BY U. S. GEOLOGICAL SURVEY, DENVER, COLORADO 80225, OR RESTON, VIRGINIA 22092
AND ARKANSAS GEOLOGICAL COMMISSION, LITTLE ROCK, ARKANSAS 72204
A FOLDER DESCRIBING TOPOGRAPHIC MAPS AND SYMBOLS IS AVAILABLE ON REQUEST



Primary highway,
hard surface Light-duty road, hard or
improved surface
Secondary highway,
hard surface Unimproved road
Interstate Route U. S. Route State Route



VAN BUREN, ARK.
NE-4 VAN BUREN 15' QUADRANGLE
35094-D3-TF-024

1987

DMA 7154 IV NE-SERIES V884