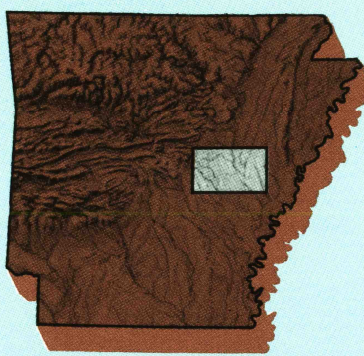


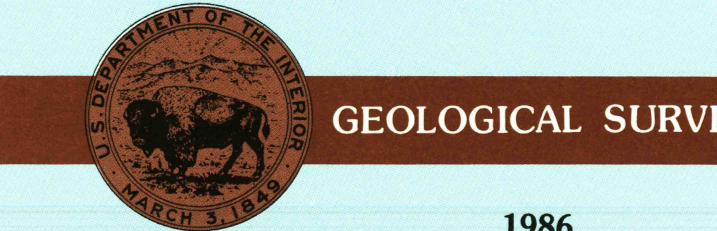
# Brinkley ARKANSAS

1:100 000-scale  
planimetric map



30 X 60 MINUTE QUADRANGLE  
SHOWING

- Elevations in meters
- Highways, roads and other manmade structures
- Water features
- Woodland areas
- Geographic names



Produced by the United States Geological Survey  
Compiled from USGS 1:24 000-scale topographic maps dated 1944-1982. Planimetry revised from aerial photographs taken 1983-84 and other source data. Revised information not field checked. Map edited 1986.  
Projection and 10 000-meter grid, zone 15, Universal Transverse Mercator  
25 000-foot grid ticks based on Arkansas coordinate system, north and south zones  
1927 North American Datum  
To place on the predicted North American Datum 1983, move the projection lines 8 meters south and 12 meters east  
There may be private inholdings within the boundaries of the National or State reservations shown on this map

NATIONAL GEODETIC VERTICAL DATUM OF 1929  
ELEVATIONS SHOWN TO THE NEAREST METER

THIS MAP COMPLIES WITH NATIONAL MAP ACCURACY STANDARDS

CONVERSION TABLE	
Meters	Feet
1	3.2808
2	6.5617
3	9.8425
4	13.1234
5	16.4042
6	19.6850
7	22.9659
8	26.2467
9	29.5275
10	32.8084

To convert meters to feet multiply by 3.2808  
To convert feet to meters multiply by 0.3048

UTM grid convergence (GN) and 1983 magnetic declination (MN) at center of map  
Diagram is approximate

ADJOINING MAPS		
1	2	3
1 Conway	2 Searcy	3 Memphis West
4 Little Rock	5 Helena	6 Meriden
7 De Wier	8 Clarkdale	

FOR SALE BY U.S. GEOLOGICAL SURVEY  
DENVER, COLORADO 80225, OR RESTON, VIRGINIA 22092



## Topographic Map Symbols

- Primary highway, hard surface

Secondary highway, hard surface

Light duty road, principal street, hard or improved surface

Other road or street; trail

Route marker: interstate; U.S. State

Railroad: standard gage; narrow gage

Bridge: overpass; underpass

Tunnel: road, railroad

Built up area; locality; elevation

Airport; landing field; landing strip

National boundary

State boundary

County boundary

National or State reservation boundary

Land grant boundary

U.S. public lands survey: range, township; section

Range, township, section line, unprojected

Power transmission line; pipeline

Dam; dam with lock

Cemetery; building

Wooded: water well; spring

Mine shaft; salt or cave; mine, quarry; gravel pit

Campground; picnic area; U.S. location monument

Ruin; cliff dwelling

Distorted surface: strip mine, lava, sand

Contour: index; intermediate; supplementary

Bathymetric contour: index; intermediate

Stream, lake: perennial; intermittent

Rapids, large and small; falls, large and small

Land to be submerged; marsh; swamp

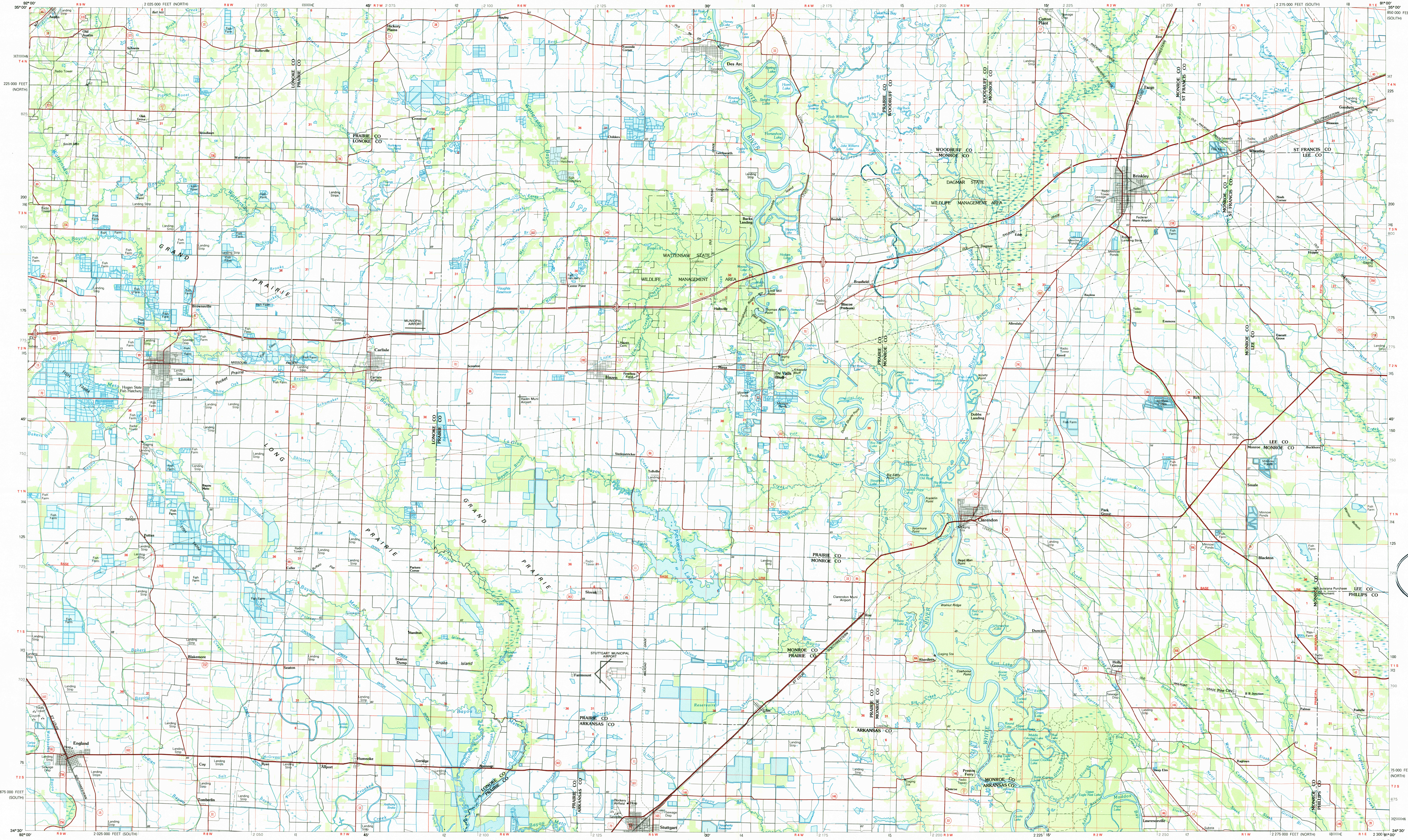
Land subject to controlled inundation; woodland

Straw; meadow

Orchard; vineyard
- 
- 
- 
- 
- 
- 
- 
- 
- 
- 
- 
- 
- 
- 
- 
- 
- 
- 
- 
- 
- 
- 
- 
- 
- 
- 
- 
- 
- 
- 
- 
- 
- 

A pamphlet describing topographic maps is available on request

## BRINKLEY, ARKANSAS



## BRINKLEY, ARKANSAS

34091-E1-PL-100