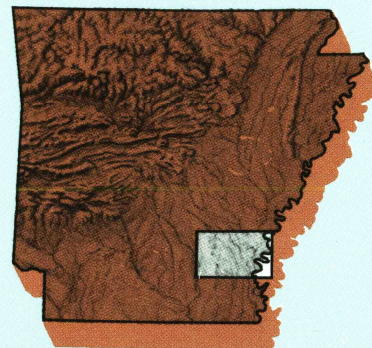


Dumas

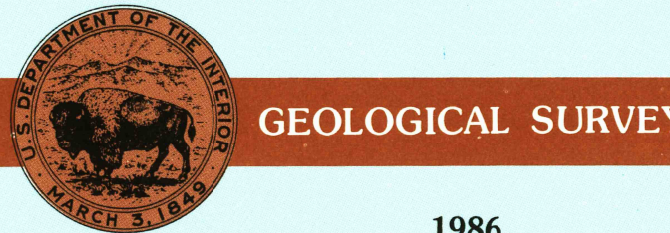
ARKANSAS—MISSISSIPPI

1:100 000-scale *metric*
topographic map



30 X 60 MINUTE QUADRANGLE
SHOWING

- Contours and elevations in meters
- Highways, roads and other manmade structures
- Water features
- Woodland areas
- Geographic names



1986

Produced by the United States Geological Survey
Compiled from USGS 1:24 000-scale topographic maps dated 1960-1981. Planimetry revised from aerial photographs taken 1984 and other source data. Revised information not field checked. Map edited 1986
Projection and 10 000-meter grid, zone 15.
Universal Transverse Mercator
25 000-foot grid ticks based on Arkansas coordinate system, south zone and Mississippi coordinate system, west zone 1927 North American Datum
To place on the predicted North American Datum 1983, move the projection lines 10 meters south and 12 meters east
There may be private inholdings within the boundaries of the National or State reservations shown on this map

CONTOUR INTERVAL 5 METERS
NATIONAL GEODETIC VERTICAL DATUM OF 1929
ELEVATIONS SHOWN TO THE NEAREST METER

THIS MAP COMPLIES WITH NATIONAL MAP ACCURACY STANDARDS

CONVERSION TABLE		DECLINATION DIAGRAM	ADJOINING MAPS			
Meters	Feet		1	2	3	
1	3.2808		4	5		
2	6.5617					
3	9.8425					
4	13.1234					
5	16.4042					
6	19.6850					
7	22.9658					
8	26.2467					
9	29.5275					
10	32.8084					
To convert meters to feet multiply by 3.2808		UTM grid convergence (GN) and 1983 magnetic declination (MD) at center of map Diagram is approximate		<div>1 Malvern</div> <div>2 De Wilt</div> <div>3 Clarkdale</div> <div>4 Camden</div> <div>5 Greenwood</div> <div>6 El Dorado</div> <div>7 Crockett</div> <div>8 Indianola</div>		
To convert feet to meters multiply by 0.3048						

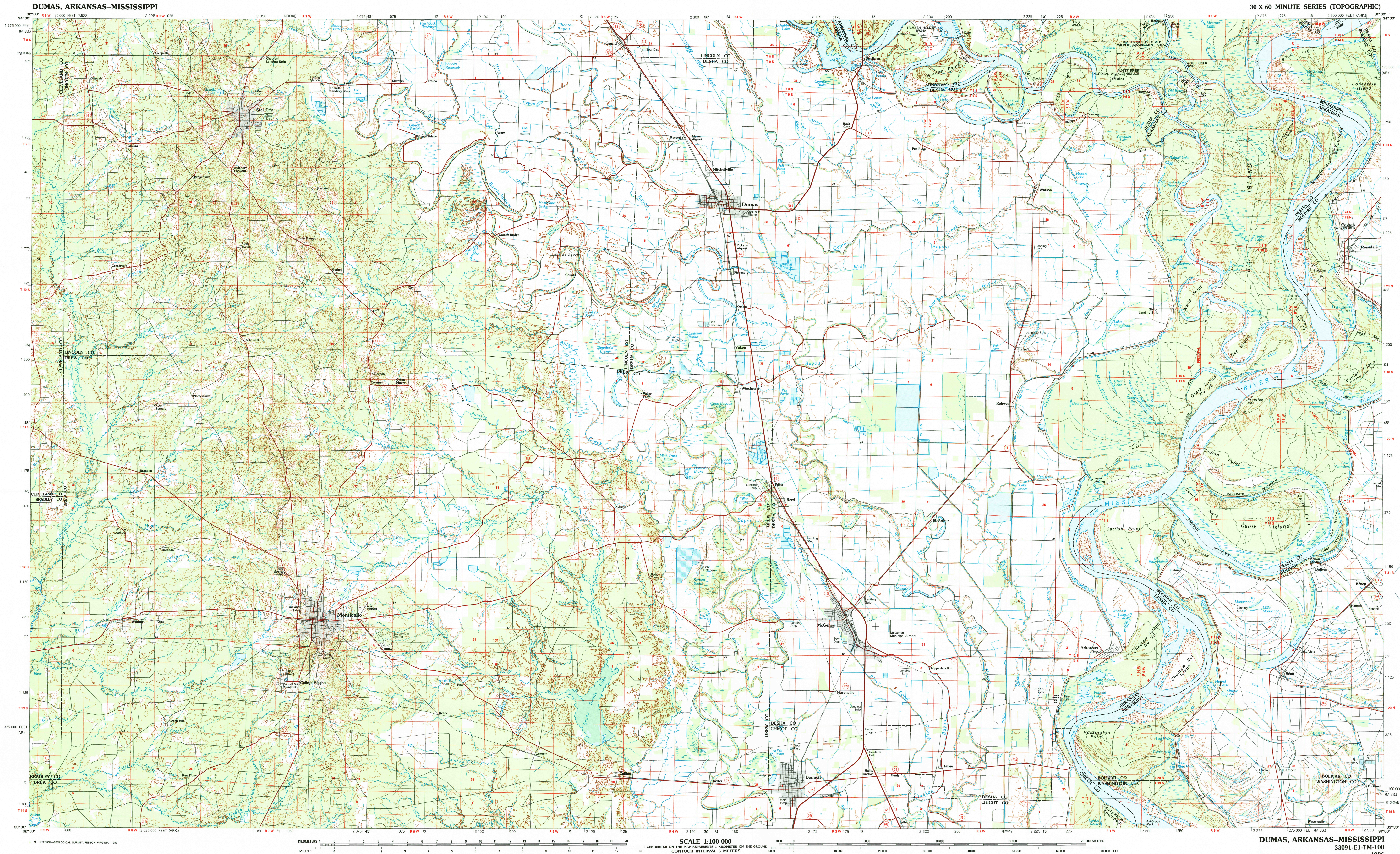
FOR SALE BY U.S. GEOLOGICAL SURVEY
DENVER, COLORADO 80225, OR RESTON, VIRGINIA 22092



Topographic Map Symbols

Primary highway, hard surface.....	
Secondary highway, hard surface.....	
Light duty road, principal street, hard or improved surface.....	
Other road or street, road.....	
Route marker: Interstate, U.S. State.....	
Railroad: standard gauge, narrow gauge.....	
Bridge: overpass, underpass.....	
Tunnel: road, railroad.....	
Built up area, locality, elevation.....	
Airport: landing field, landing strip.....	
National boundary.....	
State boundary.....	
County boundary.....	
National or State reservation boundary.....	
Land grant boundary.....	
U.S. public lands survey: range, township, section.....	
Range, township, section line: protracted.....	
Power transmission line: pipeline.....	
Dam, dam with lock.....	
Cemetery: building.....	
Windmill; water well; spring.....	
Mine shaft; adit or cave; mine, quarry; gravel pit.....	
Compass rose; point area, U.S. location monument.....	
Rune, cliff dwelling.....	
Distorted surface: strip mine, lava, sand.....	
Contours: index, intermediate, supplementary.....	
Bathymetric contours: index, intermediate.....	
Stream: low flow, perennial; intermittent.....	
Rapids, large and small; falls, large and small.....	
Area to be submerged; marsh, swamp.....	
Land subject to controlled inundation: woodland.....	
Scrub, mangrove.....	
Orchard; vineyard.....	

A pamphlet describing topographic maps is available on request



DUMAS, ARKANSAS—MISSISSIPPI
33091-E1-TM-100
1986