

# Dumas

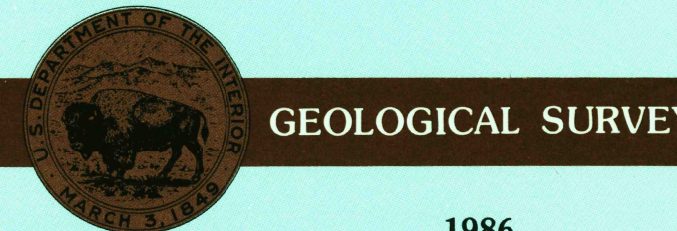
## ARKANSAS-MISSISSIPPI

1:100 000-scale  
planimetric map



30 X 60 MINUTE QUADRANGLE  
SHOWING

- Elevations in meters
- Highways, roads and other manmade structures
- Water features
- Woodland areas
- Geographic names



Produced by the United States Geological Survey  
Compiled from USGS 1:24 000-scale topographic maps dated 1960-1981. Planimetry revised from aerial photographs taken 1984 and other source data. Revised information not field checked. Map edited 1986.  
Projection and 10 000-meter grid, zone 15.  
Universal Transverse Mercator  
25 000-foot grid ticks based on Arkansas coordinate system, south zone and Mississippi coordinate system, west zone  
1927 North American Datum  
To place on the predicted North American Datum 1983, move the projection lines 10 meters south and 12 meters east  
There may be private inholdings within the boundaries of the National or State reservations shown on this map

NATIONAL GEODETIC VERTICAL DATUM OF 1929  
ELEVATIONS SHOWN TO THE NEAREST METER

THIS MAP COMPLIES WITH NATIONAL MAP ACCURACY STANDARDS

CONVERSION TABLE		DECLINATION DIAGRAM		ADJOINING MAPS		
Meters	Feet			1	2	3
1	3.2808			4	5	6
2	6.5617			7	8	
3	9.8425					
4	13.1234	To convert meters to feet multiply by 3.2808				
5	16.4042					
6	19.6850	To convert feet to meters multiply by 0.3048				
7	22.9658					
8	26.2467	UTM grid convergence (GN) and 1983 magnetic declination (MD) at center of map Diagram is approximate				
9	29.5275					
10	32.8084					

1 Melvern  
2 West  
3 Clarkdale  
4 Cananda  
5 Greenwood  
6 El Dorado  
7 Crossett  
8 Indianola

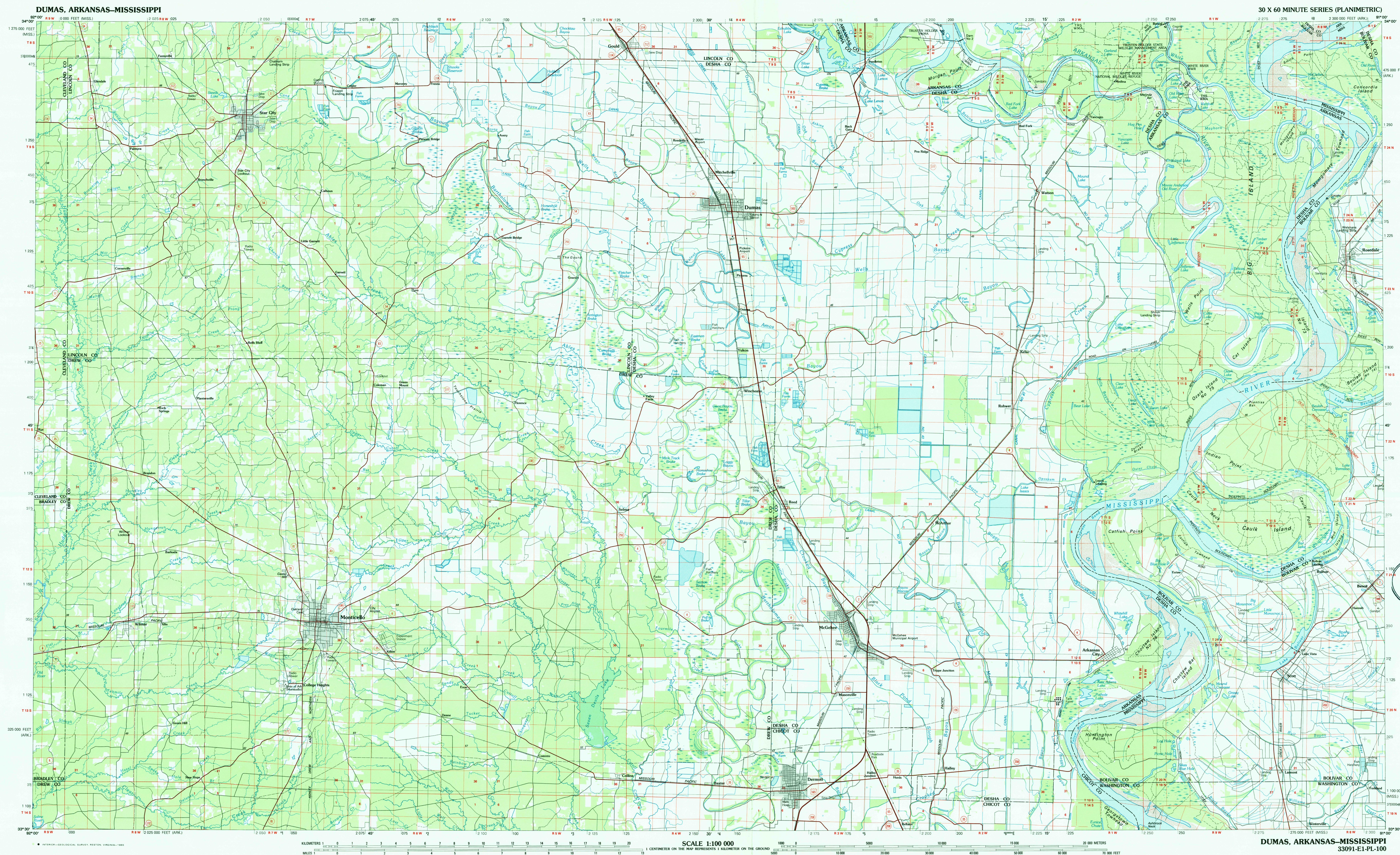
FOR SALE BY U.S. GEOLOGICAL SURVEY  
CENTER, COLORADO 80225, OR RESTON, VIRGINIA 22092

USGS NHD HISTORICAL MAP  
JUL 0 8 1986  
REC'D FILE COPY

### Topographic Map Symbols

Primary highway, hard surface.....	
Secondary highway, hard surface.....	
Light duty road, gravel street, hard or improved surface.....	
Other road or street; trail.....	
Route marker: Interstate, U.S.; State.....	
Railroad: standard gage; narrow gage.....	
Bridge: overpass; underpass.....	
Tunnel: road; railroad.....	
Built up area; locality; elevation.....	
Airport; landing field; landing strip.....	
National boundary.....	
State boundary.....	
County boundary.....	
National or State reservation boundary.....	
Land grant boundary.....	
U.S. public lands survey: range, township, section.....	
Range, township, section line, projected.....	
Power transmission line; pipeline.....	
Dam; dam with lock.....	
Cemetery; building.....	
Windsill; water well; spring.....	
Mine shaft; adit or cave; mine; quarry; gravel pit.....	
Campground; picnic area; U.S. location monument.....	
Ruins; cliff dwelling.....	
Distorted surface: strip mine, lava, sand.....	
Contours: index; intermediate; supplementary.....	
Bathymetric contours: index; intermediate.....	
Stream, lake; perennial; intermittent.....	
Rapids, large and small; falls, large and small.....	
Area to be submerged; marsh; swamp.....	
Land subject to controlled inundation; woodland.....	
Straw, mangrove.....	
Orchard; vineyard.....	

A pamphlet describing topographic maps is available on request



DUMAS, ARKANSAS-MISSISSIPPI  
33091-E1-PL-100  
1986