

Jonesboro

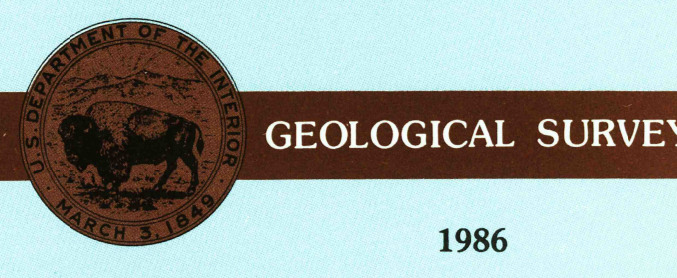
ARKANSAS-TENNESSEE-MISSOURI

1:100 000-scale
planimetric map



30 X 60 MINUTE QUADRANGLE
SHOWING

- Elevations in meters
- Highways, roads and other manmade structures
- Water features
- Woodland areas
- Geographic names



Produced by the United States Geological Survey
Compiled from USGS 1:24 000-scale topographic maps dated 1980-1985. Planimetry revised from aerial photographs taken 1984 and other source data. Revised information not field checked. Map edited 1986
Projection and 10 000-meter grid, zone 15,
Universal Transverse Mercator
25 000-foot grid ticks based on Arkansas coordinate system, north zone
1927 North American Datum
To place on the predicted North American Datum 1983, move the projection lines 6 meters south and 9 meters east
There may be private inholdings within the boundaries of the National or State reservations shown on this map

NATIONAL GEODETIC VERTICAL DATUM OF 1929
ELEVATIONS SHOWN TO THE NEAREST METER

THIS MAP COMPLIES WITH NATIONAL MAP ACCURACY STANDARDS

CONVERSION TABLE		DECLINATION DIAGRAM		ADJOINING MAPS		
Meters	Feet			1	2	3
2	3.2808			4	5	
3	9.8425					
4	13.1234					
5	16.4043					
6	19.6852					
7	22.9661					
8	26.2470					
9	29.5279					
10	32.8088					
To convert meters to feet multiply by 2.2046		UTM grid convergence (GN) at 30' longitude		1 Cherokee Village 2 Potosi 3 Dardanelle 4 Batesville 5 Dardanelle 6 Searcy 7 Memphis West 8 Memphis East		
To convert feet to meters multiply by 0.3048		Diagram is approximate				

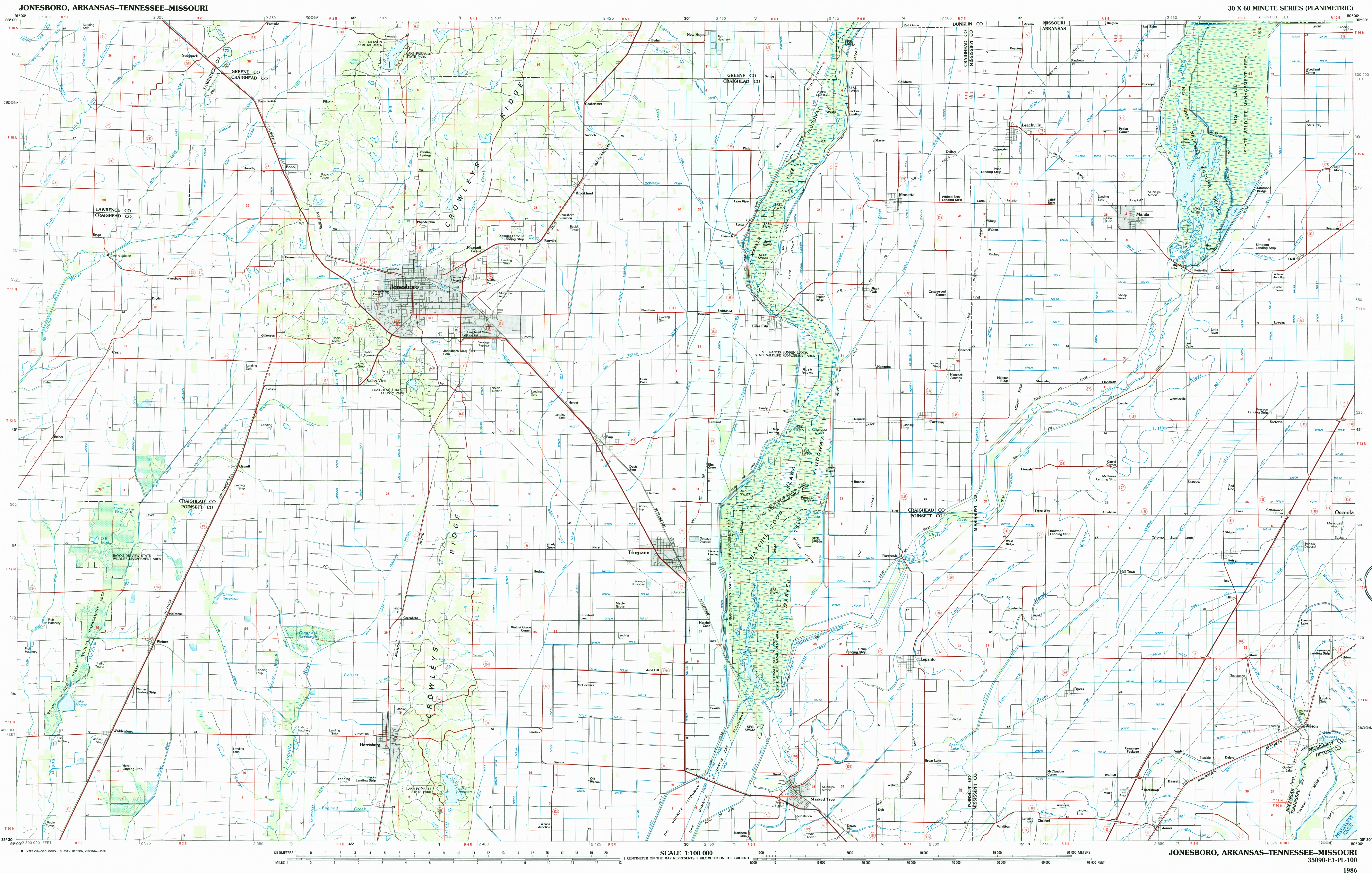
FOR SALE BY U. S. GEOLOGICAL SURVEY
DENVER, COLORADO 80225, OR RESTON, VIRGINIA 22092

SEP 22 1986
REC'D FILE COPY

Topographic Map Symbols

- Primary highway, hard surface
- Secondary highway, hard surface
- Light duty road, gravel road, hard or improved surface
- Other road or street, trail
- Route marker: Interstate, U.S. State
- Railroad: standard gage, narrow gage
- Bridge: overpass, underpass
- Tunnel: road, railroad
- Built up area, locality, elevation
- Airport: landing field, landing strip
- National boundary
- State boundary
- County boundary
- National or State reservation boundary
- Land grant boundary
- U.S. public lands survey: range, township, section
- Range, township, section line: intersected
- Power transmission line: pipeline
- Dam: dam with lock
- Cemetery: building
- Windmill; water well; spring
- Mine shaft: adit or cave; mine, quarry; gravel pit
- Campground: picnic area; U.S. location monument
- Ruins: cliff dwelling
- Distorted surface: strip mine, lava, sand
- Contours: index, intermediate, supplementary
- Bathymetric contours: index, intermediate
- Stream, lake: perennial, intermittent
- Rapids, large and small; falls, large and small
- Area to be submerged; marsh, swamp
- Land subject to controlled inundation; woodland
- Struck, overgrown
- Orchard; vineyard

A pamphlet describing topographic maps is available on request



JONESBORO, ARKANSAS-TENNESSEE-MISSOURI
35090-E1-PL-100

1986

SCALE 1:100 000
KILOMETERS 1 0 1 2 3 4 5 6 7 8 9 10 11 12 13 14 15 16 17 18 19 20
CENTIMETER ON THE MAP REPRESENTS 1 KILOMETER ON THE GROUND

1:100 000
METERS 0 5000 10000 15000 20000 25000 30000 35000 40000 45000 50000 55000 60000 65000 70000 75000 80000 85000 90000 95000 100000