

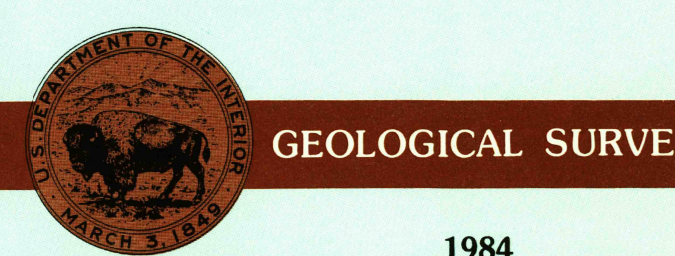
Paragould ARKANSAS-MISSOURI

1:100 000-scale
planimetric map



30 X 60 MINUTE QUADRANGLE
SHOWING

- Elevations in meters
- Highways, roads and other manmade structures
- Water features
- Woodland areas
- Geographic names



1984

Produced by the United States Geological Survey
Compiled from USGS 1:24 000-scale topographic maps dated 1964-1984. Planimetry revised from aerial photographs taken 1976 and 1980 and other source data. Revised information not field checked. Map edited 1984
Projection and 10 000-meter grid, zone 15, Universal Transverse Mercator
25 000-foot grid ticks based on Arkansas coordinate system, north zone and Missouri coordinate system, east zone 1927 North American Datum
To place on the predicted North American Datum 1983, move the projection lines 5 meters south and 10 meters east
There may be private inholdings within the boundaries of the National or State reservations shown on this map

NATIONAL GEODETIC VERTICAL DATUM OF 1929
ELEVATIONS SHOWN TO THE NEAREST METER

THIS MAP COMPLIES WITH NATIONAL MAP ACCURACY STANDARDS

CONVERSION TABLE	
Meters	Feet
1	3.2808
2	6.5617
3	9.8425
4	13.1234
5	16.4042
6	19.6850
7	22.9658
8	26.2467
9	29.5275
10	32.8084

To convert meters to feet multiply by 3.2808
To convert feet to meters multiply by 0.3048

DECLINATION DIAGRAM

ADJOINING MAPS

1	2	3
4	5	6
7	8	9

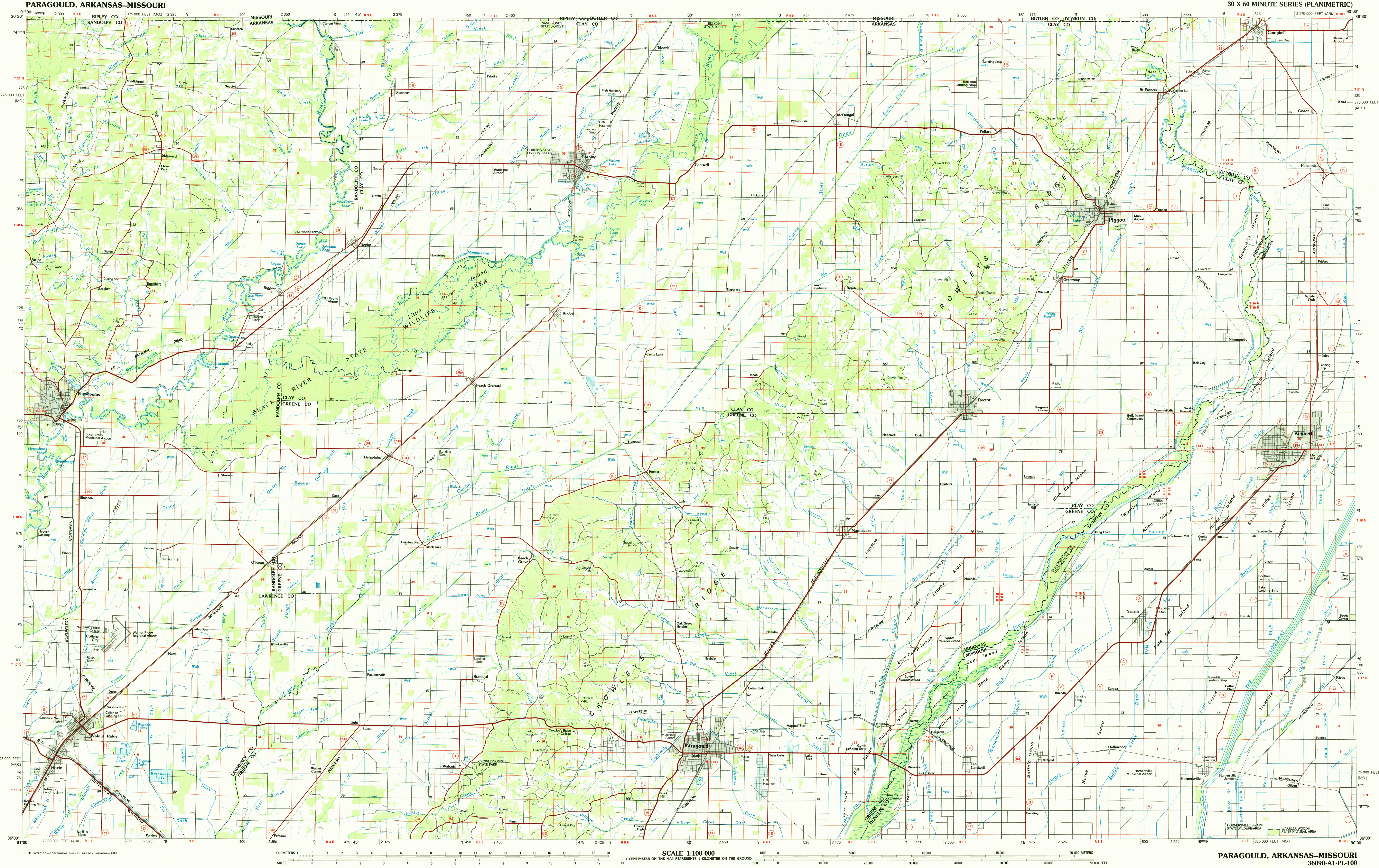
- 1 West Plains
- 2 Poplar Bluff
- 3 Silveston
- 4 Cherokee
- 5 Dyersburg
- 6 Batesville
- 7 Osage
- 8 Blytheville

FOR SALE BY U.S. GEOLOGICAL SURVEY, DENVER, COLORADO 80225 OR RESTON, VIRGINIA 22092

Topographic Map Symbols

- Primary highway, hard surface
Secondary highway, hard surface
Light duty road, principal street, hard or improved surface
Other road or street, trail
Route marker, Interstate, U.S. State
Railroad: standard gage, narrow gage
Bridge: overpass, underpass
Tunnel: road, railroad
Built up area, locality, elevation
Airport, landing field, landing strip
National boundary
State boundary
County boundary
National or State reservation boundary
Land grant boundary
U.S. public lands survey: range, township, section
Range, township, section line: protected
Power transmission line: pipeline
Dam, dam with lock
Canal, building
Windmill, water well, spring
Mine shaft, adit or cave, mine, quarry, gravel pit
Ruins, old dwelling
Campground, picnic area, U.S. location monument
Disturbed surface: strip mine, levee, sand
Contours: index, intermediate, supplementary
Bathymetric contours: index, intermediate
Stream, lake, perennial, intermittent
Rocks, large and small, tide, large and small
Area to be submerged, marsh, swamp
Land subject to controlled inundation
Soda, mangrove
Orchard, vineyard

A pamphlet describing topographic maps is available on request



PARAGOULD, ARKANSAS-MISSOURI
36090-A1-PL-100