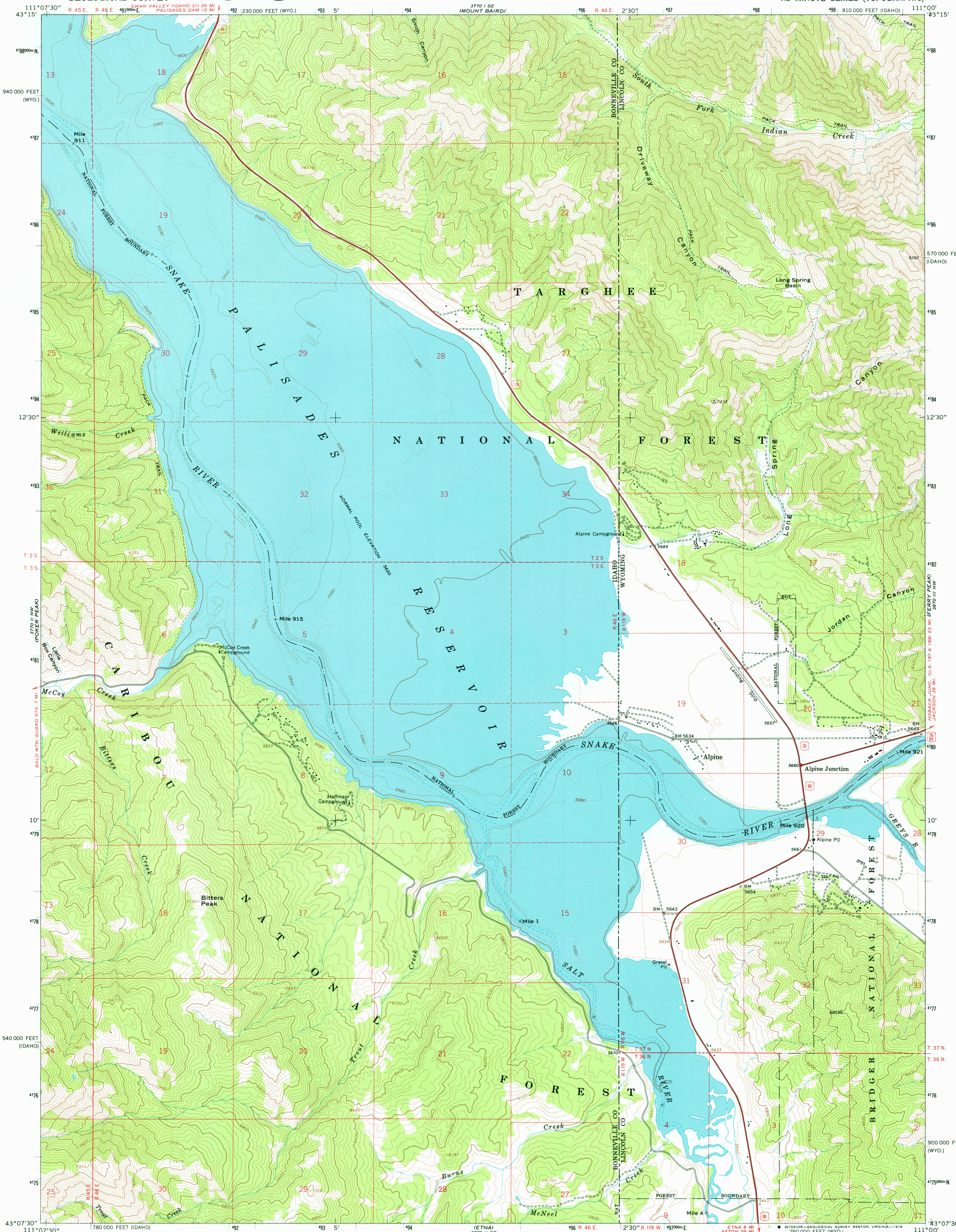


UNITED STATES
DEPARTMENT OF THE INTERIOR
GEOLOGICAL SURVEY



ALPINE QUADRANGLE
IDAHO-WYOMING
7.5 MINUTE SERIES (TOPOGRAPHIC)

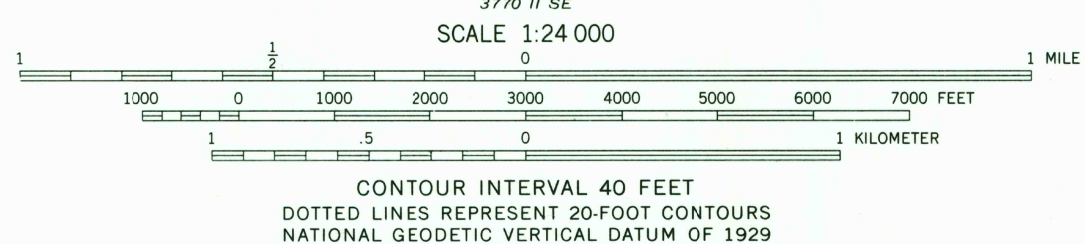
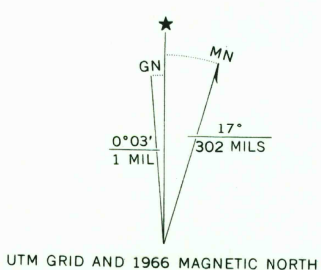
3870 15' SW
(OBSERVATION PLATE)



Mapped, edited, and published by the Geological Survey
Control by USGS and USC&GS

Topography by photogrammetric methods from aerial
photographs taken 1965. Field checked 1966
Underwater contours by U.S. Bureau of Reclamation

Polyconic projection, 1927 North American datum
10,000-foot grids based on Idaho coordinate system,
east zone, and Wyoming coordinate system, west zone
1000-meter Universal Transverse Mercator grid ticks,
zone 12, shown in blue
To place on the predicted North American Datum 1983,
move the projection lines 11 meters north and
63 meters east as shown by dashed corner ticks
There may be private inholdings within the boundaries of
the National or State reservations shown on this map



THIS MAP COMPLIES WITH NATIONAL MAP ACCURACY STANDARDS
FOR SALE BY U.S. GEOLOGICAL SURVEY, DENVER, COLORADO 80225, OR RESTON, VIRGINIA 22092
A FOLDER DESCRIBING TOPOGRAPHIC MAPS AND SYMBOLS IS AVAILABLE ON REQUEST

ROAD CLASSIFICATION
Heavy-duty ——— Light-duty ———
Unimproved dirt ———
U.S. Route



USGS
Historical File
Topographic Division

ALPINE, IDAHO-WYO.
N4307.5-W11100/7.5

1966
DMA 3770 11 NE-SERIES V893

2000
FEB 5 1980