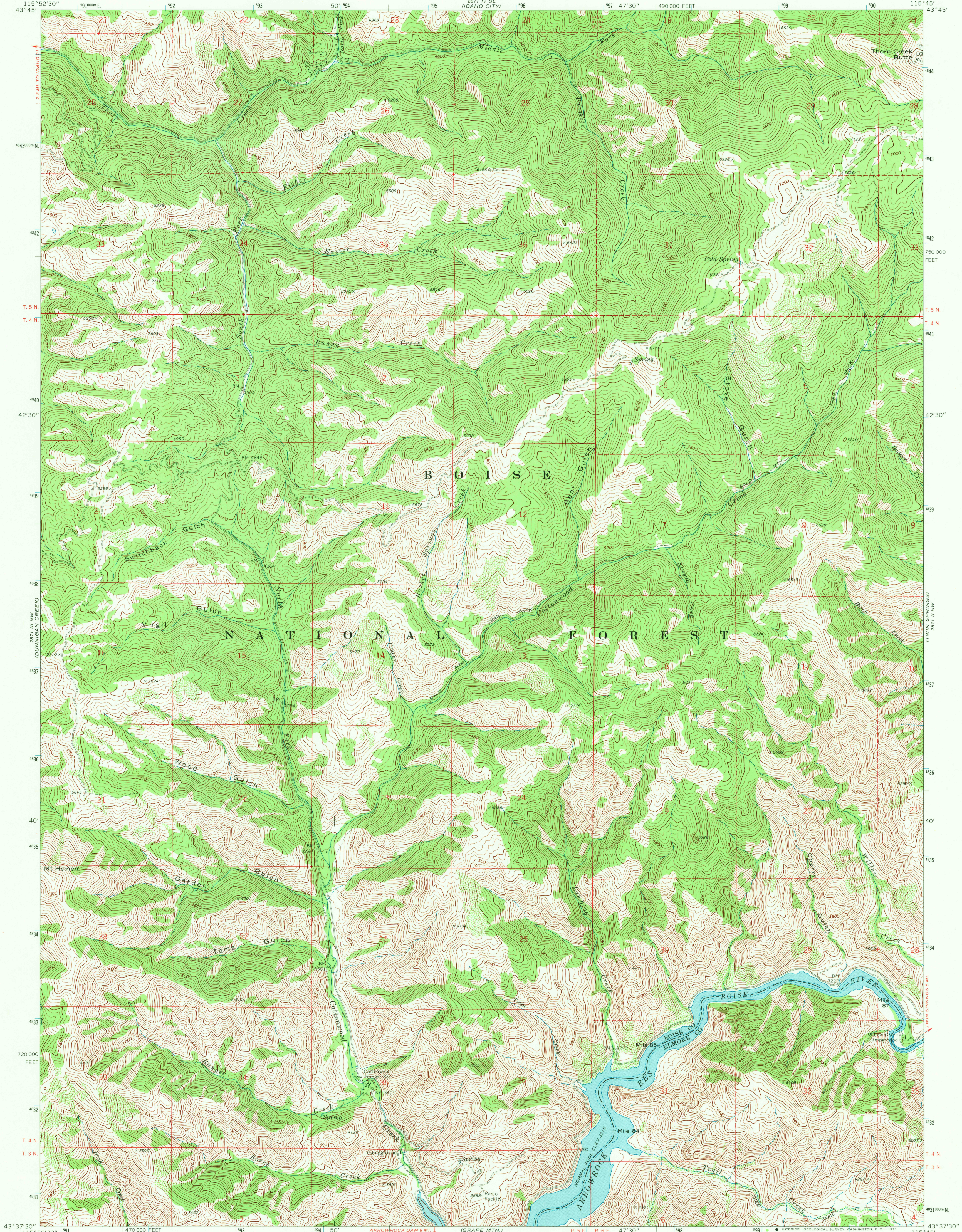
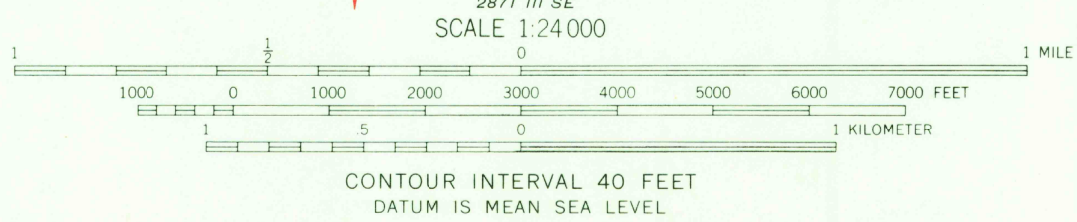
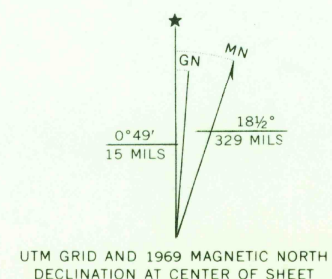


UNITED STATES
DEPARTMENT OF THE INTERIOR
GEOLOGICAL SURVEY

ARROWROCK RESERVOIR NE QUADRANGLE
IDAHO
7.5 MINUTE SERIES (TOPOGRAPHIC)



Mapped by the U. S. Forest Service
Edited and published by the Geological Survey
Control by USGS, USC&GS, and USFS
Topography by photogrammetric methods from aerial
photographs taken 1963. Field checked by USGS 1969
Polyconic projection. 1927 North American datum
10,000-foot grid based on Idaho coordinate system,
west zone
1000-meter Universal Transverse Mercator grid ticks,
zone 11, shown in blue



ROAD CLASSIFICATION
Light-duty road, all weather, improved surface
Unimproved road, fair or dry weather

ARROWROCK RESERVOIR NE, IDAHO
N4337.5—W11545.7.5

1969

AMS 2871 III NE—SERIES V893

THIS MAP COMPLIES WITH NATIONAL MAP ACCURACY STANDARDS
FOR SALE BY U. S. GEOLOGICAL SURVEY, DENVER, COLORADO 80225, OR WASHINGTON, D. C. 20242
A FOLDER DESCRIBING TOPOGRAPHIC MAPS AND SYMBOLS IS AVAILABLE ON REQUEST

USGS
HISTORICAL FILE
TOPOGRAPHIC DIVISION

OCT 4 1971