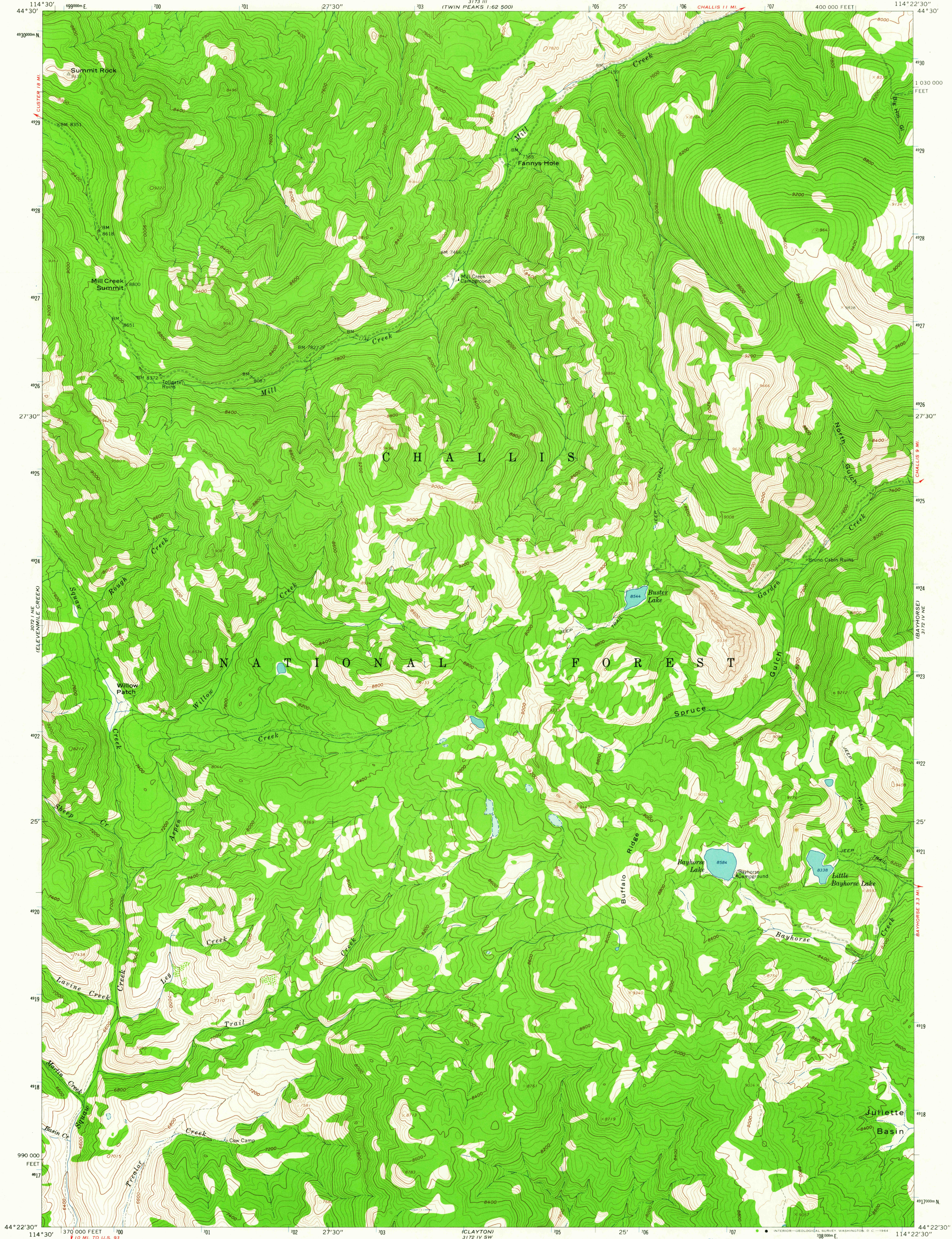


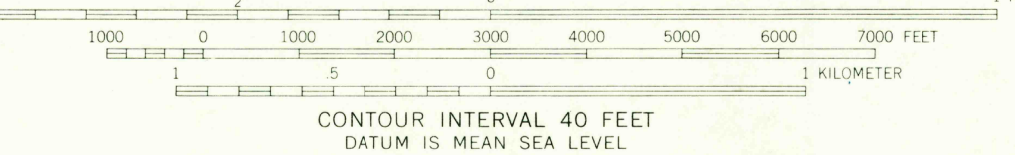
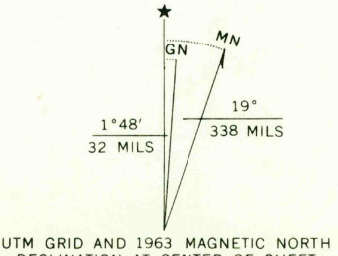
UNITED STATES
DEPARTMENT OF THE INTERIOR
GEOLOGICAL SURVEY

BAYHORSE LAKE QUADRANGLE
IDAHO-CUSTER CO.
7.5 MINUTE SERIES (TOPOGRAPHIC)
NW 1/4 CLAYTON 15' QUADRANGLE

3173 III
(TWIN PEAKS)
1:62,500



Mapped, edited, and published by the Geological Survey
Control by USGS and USC&GS
Topography by photogrammetric methods from aerial
photographs taken 1957. Field checked 1963
Polyconic projection. 1927 North American datum
10,000-foot grid based on Idaho coordinate system, central zone
1000-meter Universal Transverse Mercator grid ticks,
zone 11, shown in blue
Where omitted, land lines have not been established



USGS
Historical File
Topographic Division



ROAD CLASSIFICATION
Unimproved dirt

BAYHORSE LAKE, IDAHO
NW 1/4 CLAYTON 15' QUADRANGLE
N4422.5-W11422.5/7.5

1963

AMS 3172 IV NW-SERIES V893

THIS MAP COMPLIES WITH NATIONAL MAP ACCURACY STANDARDS.
FOR SALE BY U. S. GEOLOGICAL SURVEY, DENVER 25, COLORADO OR WASHINGTON 25, D. C.
A FOLDER DESCRIBING TOPOGRAPHIC MAPS AND SYMBOLS IS AVAILABLE ON REQUEST

U.S.G.S.
FILE COPY
TOPOGRAPHIC DIVISION

AUG 21 1964