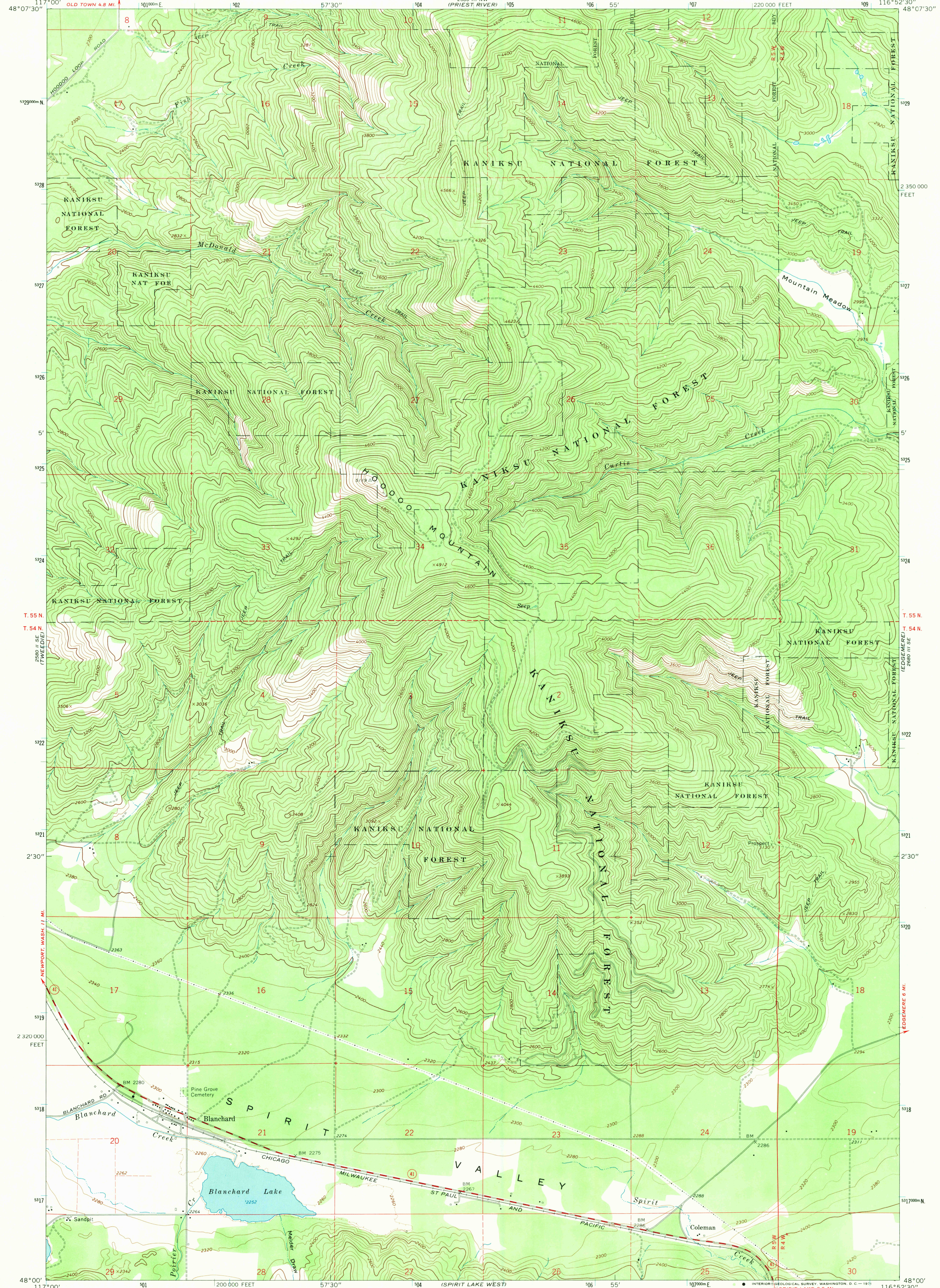


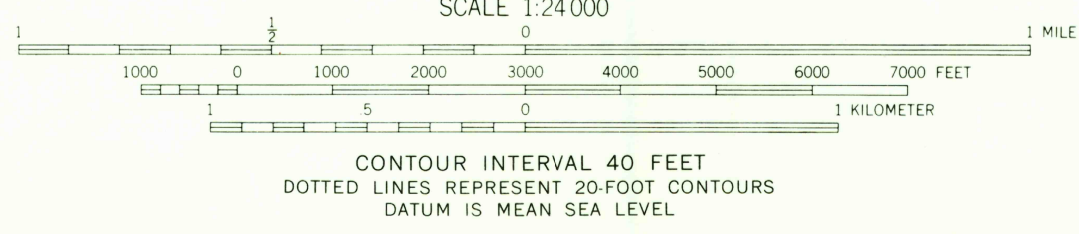
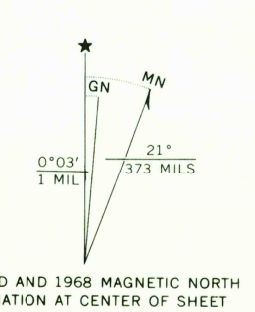
BLANCHARD
IDaho-BONNER CO.
7.5 MINUTE SERIES (TOPOGRAPHIC)

UNITED STATES
DEPARTMENT OF THE INTERIOR
GEOLOGICAL SURVEY

BLANCHARD QUADRANGLE
IDAHO-BONNER CO.
7.5 MINUTE SERIES (TOPOGRAPHIC)



Mapped, edited, and published by the Geological Survey
Control by USGS and USC&GS
Topography by photogrammetric methods from aerial photographs taken 1966. Field checked 1968
Polyconic projection. 1927 North American datum
10,000-foot grid based on Idaho coordinate system, west zone
1000-meter Universal Transverse Mercator grid ticks, zone 11, shown in blue
Fine red dashed lines indicate selected fence lines



Secondary highway, all weather, light-duty road, all weather, improved surface
Unimproved road, fair or dry weather
State Route
USGS Historical File Topographic Division
BLANCHARD, IDAHO
N4800-W11652.5/7.5
1968
AMS 2680 III SW-SERIES 7893

FOR SALE BY U. S. GEOLOGICAL SURVEY, DENVER, COLORADO 80225, OR WASHINGTON, D. C. 20242
A FOLDER DESCRIBING TOPOGRAPHIC MAPS AND SYMBOLS IS AVAILABLE ON REQUEST



U.S.G.S.
FILE COPY
TOPOGRAPHIC DIVISION
HISTORICAL

JUL 27 1971
HISTORICAL