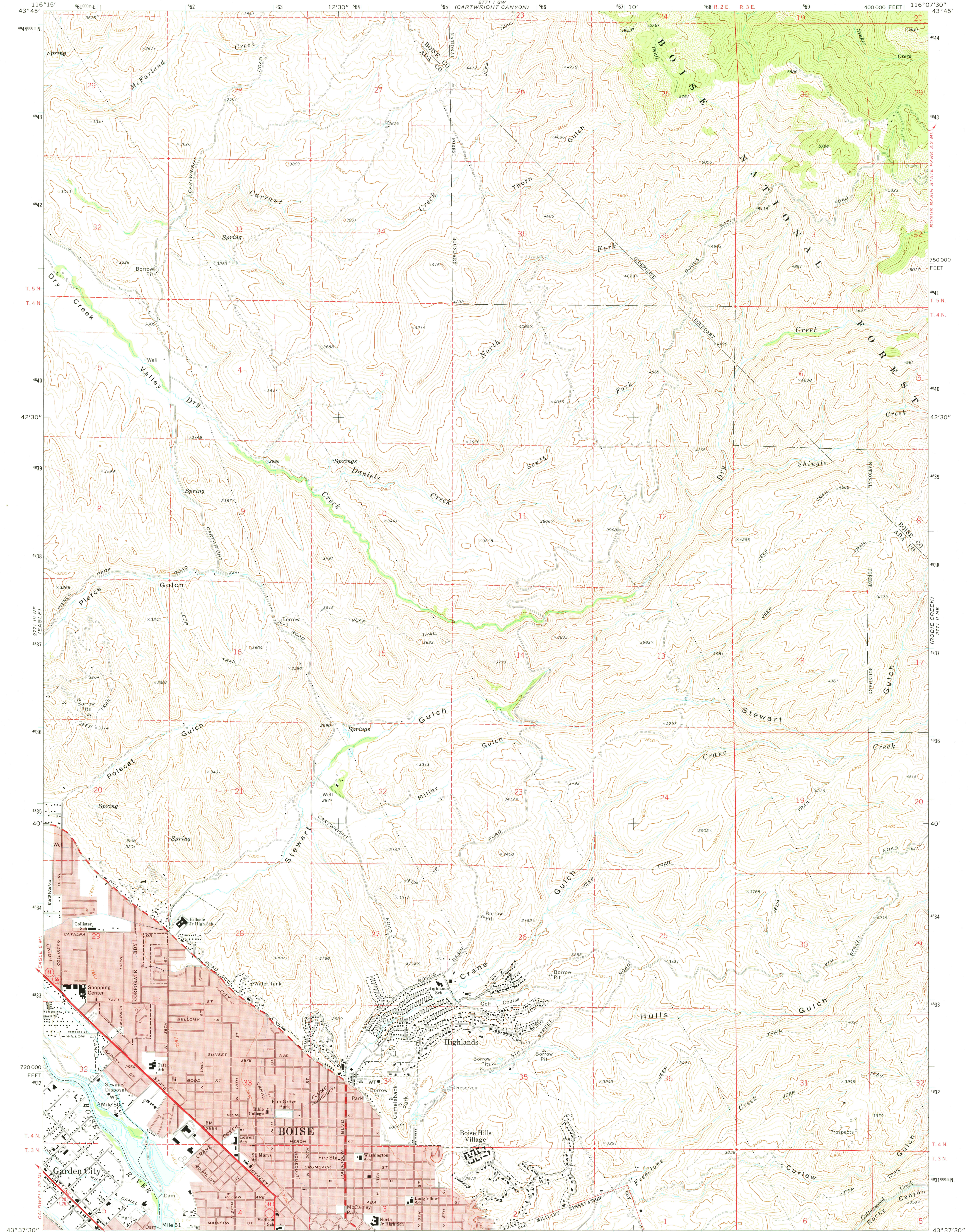
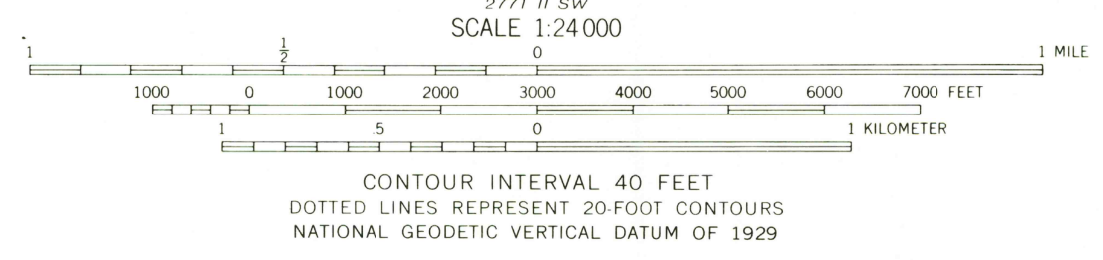


UNITED STATES  
DEPARTMENT OF THE INTERIOR  
GEOLOGICAL SURVEY

BOISE NORTH QUADRANGLE  
IDAHO  
7.5 MINUTE SERIES (TOPOGRAPHIC)  
NW 1/4 BOISE 15' QUADRANGLE



Mapped, edited, and published by the Geological Survey  
Control by USGS and NOS/NOAA  
Topography by photogrammetric methods from aerial  
photographs taken 1971. Field checked 1972.  
Supersedes map dated 1954  
Projection and 10,000-foot grid ticks: Idaho coordinate  
system, west zone (transverse Mercator)  
1000-meter Universal Transverse Mercator grid ticks,  
zone 11, shown in blue. 1927 North American datum  
Red tint indicates areas in which only  
landmark buildings are shown  
Fine red dashed lines indicate selected fence lines



ROAD CLASSIFICATION  
Primary highway, hard surface  
Secondary highway, hard surface  
Light-duty road, hard or improved surface  
Unimproved road  
Interstate Route  
U. S. Route  
State Route

USGS  
Historical File  
Topographic Division

BOISE NORTH, IDAHO  
NW 1/4 BOISE 15' QUADRANGLE  
N4337.5-W11607.5/7.5  
1972

AMS 2771 II NW-SERIES Y893

MAR 20 1975