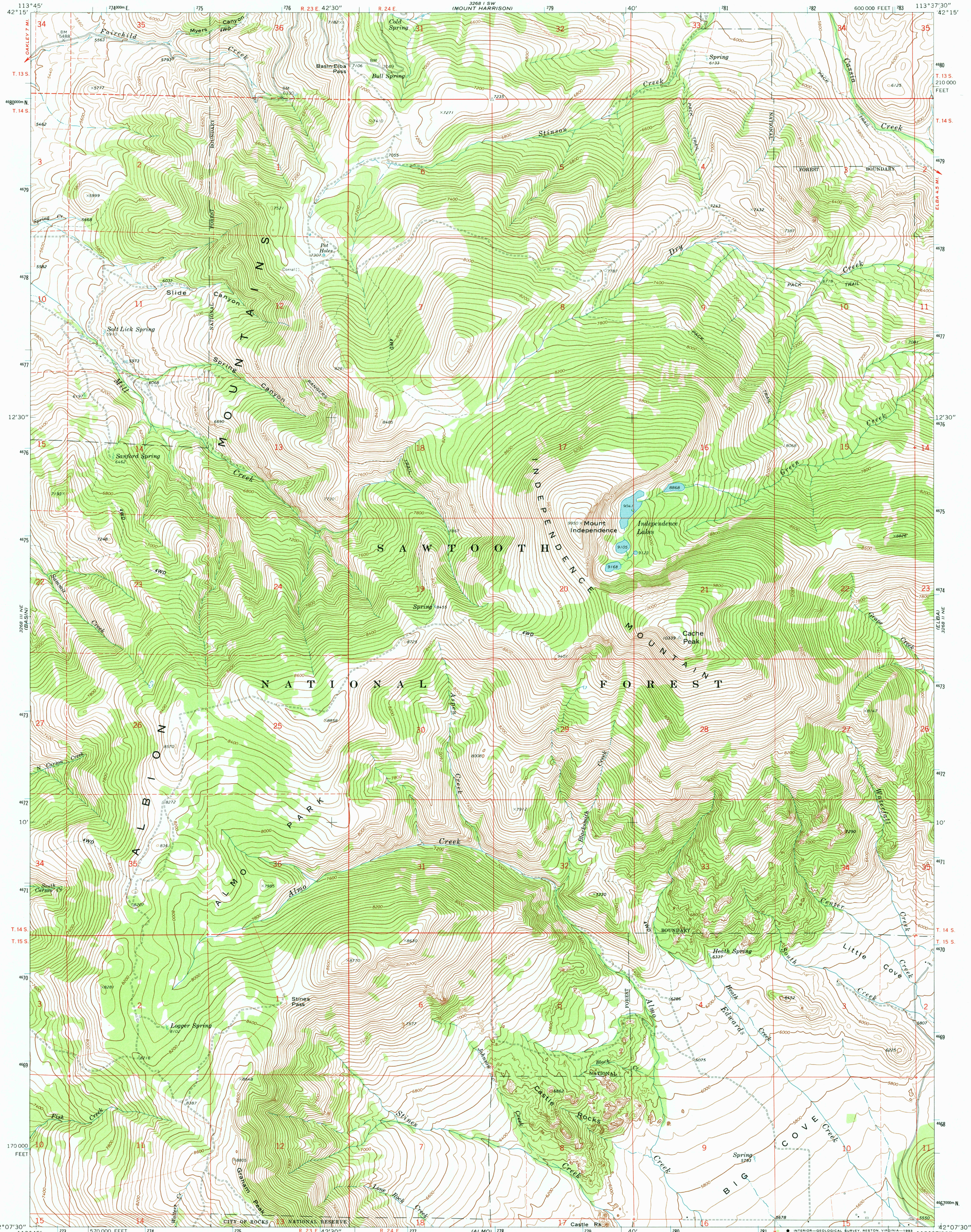


3268 1 SE  
COMMON RIDGE



Produced by the United States Geological Survey  
Control by USGS and NOS/NOAA

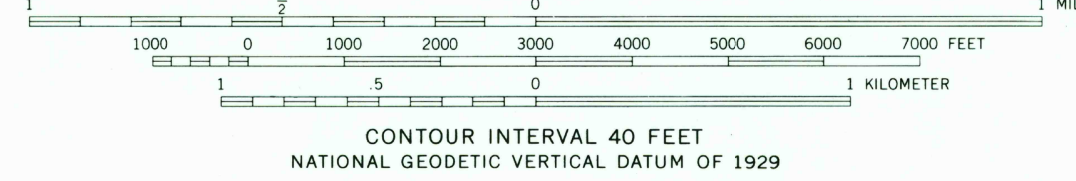
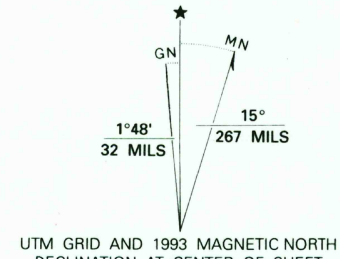
Compiled from aerial photographs taken 1967  
Field checked 1968

North American Datum of 1927 (NAD 27). Projection and  
10,000-foot grid ticks: Idaho Coordinate System, central zone  
(Transverse Mercator). 1,000-meter Universal Transverse  
Mercator grid ticks, zone 12, shown in blue.

The difference between NAD 27 and North American Datum of  
1983 (NAD 83) for 7.5 minute intersections is given in USGS  
Bulletin 1875. The NAD 83 is shown by dashed corner ticks.

There may be private inholdings within the boundaries of the  
National or State reservations shown on this map.

Fine red dashed lines indicate selected fence and field lines where  
generally visible on aerial photographs. This information is unchecked.



NATIONAL GEODETIC VERTICAL DATUM OF 1929

THIS MAP COMPLIES WITH NATIONAL MAP ACCURACY STANDARDS  
FOR SALE BY U. S. GEOLOGICAL SURVEY, DENVER, COLORADO 80225, OR RESTON, VIRGINIA 22092  
A FOLDER DESCRIBING TOPOGRAPHIC MAPS AND SYMBOLS IS AVAILABLE ON REQUEST



CACHE PEAK, IDAHO  
4213-B6-TF-024

1968

DMA 3268 11 NW-SERIES V893

3268 1 SE  
COMMON RIDGE

3268 1 SE  
COMMON RIDGE

3268 1 SE  
COMMON RIDGE

3268 1 SE  
COMMON RIDGE