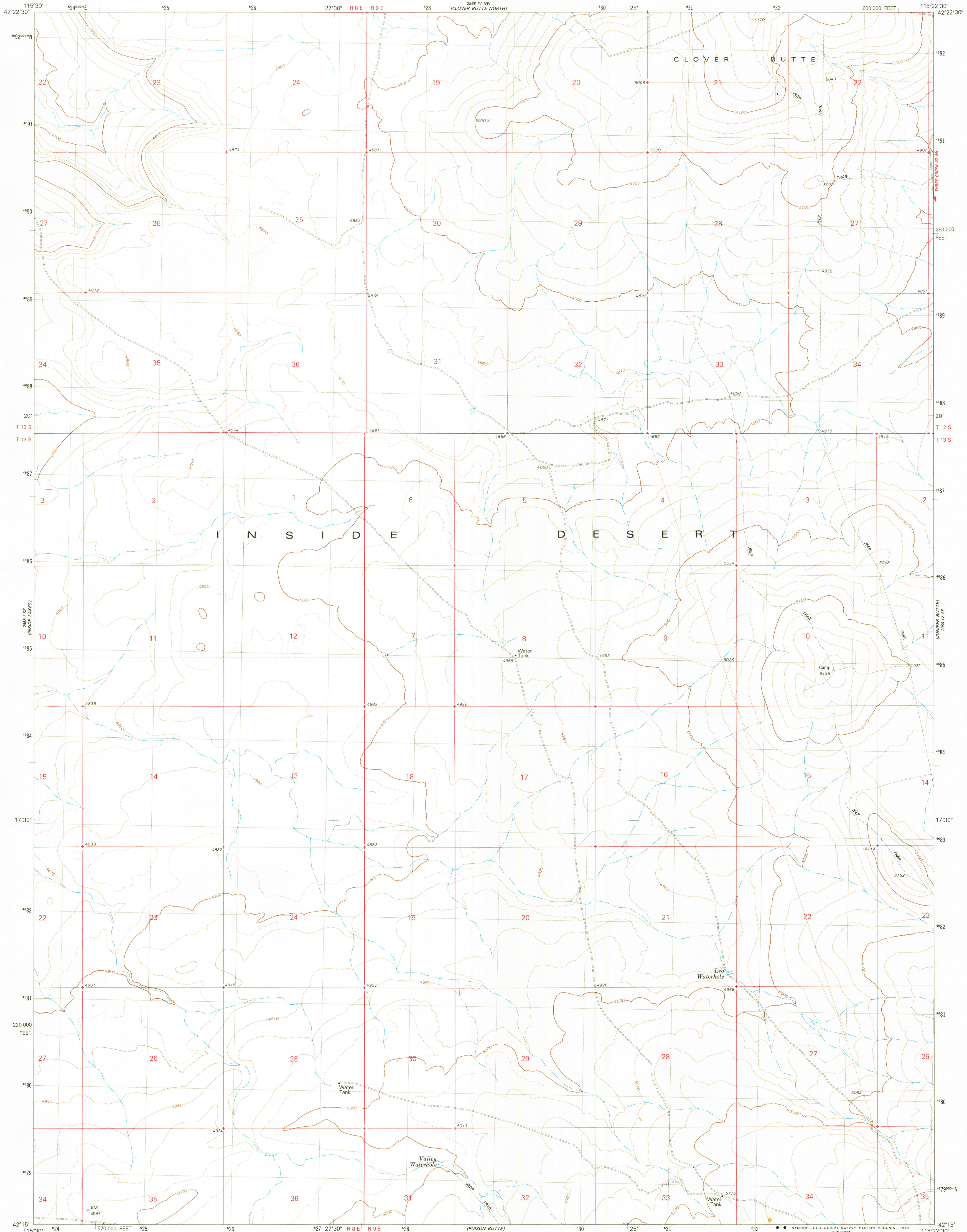


UNITED STATES
DEPARTMENT OF THE INTERIOR
GEOLOGICAL SURVEY

CLOVER BUTTE SOUTH QUADRANGLE
IDAHO-OWYHEE CO.
7.5 MINUTE SERIES (TOPOGRAPHIC)



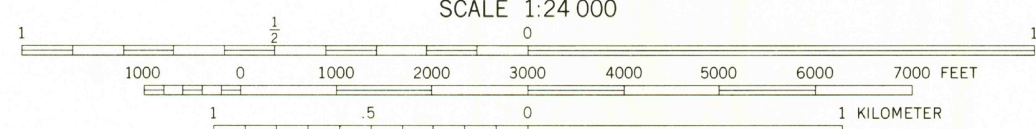
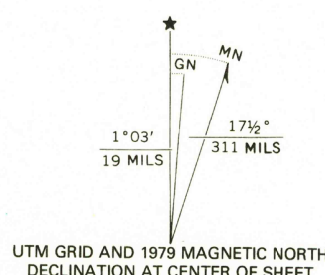
Mapped, edited, and published by the Geological Survey
Control by USGS and NOS/NOAA

Topography by photogrammetric methods from aerial
photographs taken 1973. Field checked 1974
Map edited 1979

Projection and 10,000-foot grid ticks: Idaho coordinate
system, west zone (transverse Mercator)
1000-meter Universal Transverse Mercator grid, zone 11
1927 North American Datum

To place on the predicted North American Datum 1983
move the projection lines 14 meters north and
75 meters east as shown by dashed corner ticks

Fine red dashed lines indicate selected fence and field lines
where generally visible on aerial photographs
This information is unchecked



CONTOUR INTERVAL 20 FEET
DOTTED LINES REPRESENT 10-FOOT CONTOURS
NATIONAL GEODETIC VERTICAL DATUM OF 1929

THIS MAP COMPLIES WITH NATIONAL MAP ACCURACY STANDARDS
FOR SALE BY U. S. GEOLOGICAL SURVEY, DENVER, COLORADO 80225, OR RESTON, VIRGINIA 22092
A FOLDER DESCRIBING TOPOGRAPHIC MAPS AND SYMBOLS IS AVAILABLE ON REQUEST



ROAD CLASSIFICATION
Primary highway, hard surface
Secondary highway, hard surface
Unimproved road
Interstate Route
U. S. Route
State Route

CLOVER BUTTE SOUTH, IDAHO
N4215-W11522.5/7.5
1979

DMA 2968 IV SW-SERIES V893

JUL 30 1980
2003