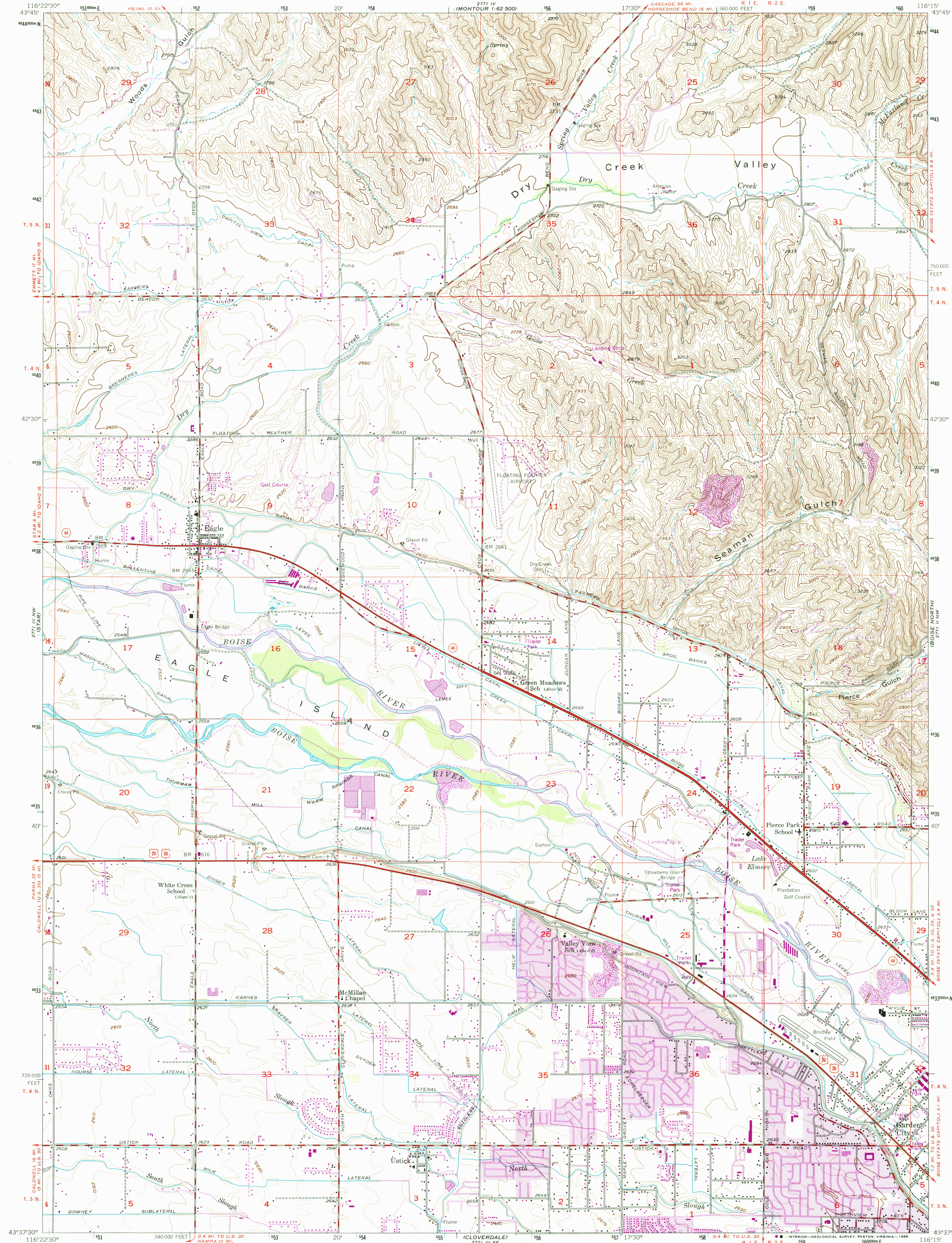


2771 IV
MONTOUR 1:62,500
1:62,500

UNITED STATES
DEPARTMENT OF THE INTERIOR
GEOLOGICAL SURVEY

EAGLE QUADRANGLE
IDAHO-ADA CO.
7.5 MINUTE SERIES (TOPOGRAPHIC)

2771 IV SW
CARTWRIGHT CANYON



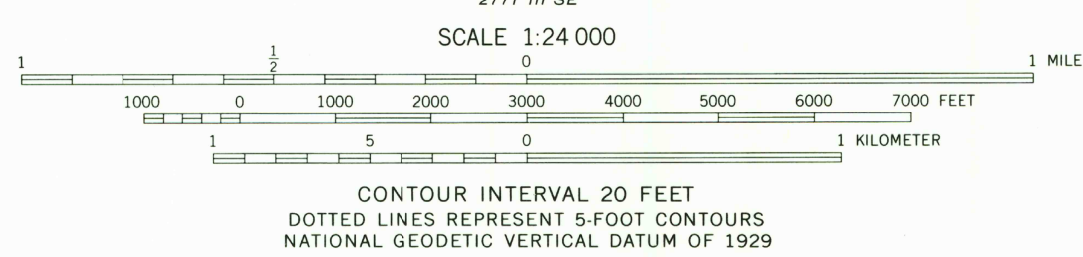
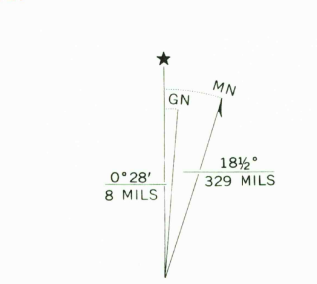
Mapped, edited, and published by the Geological Survey

Control by USGS and USC&GS

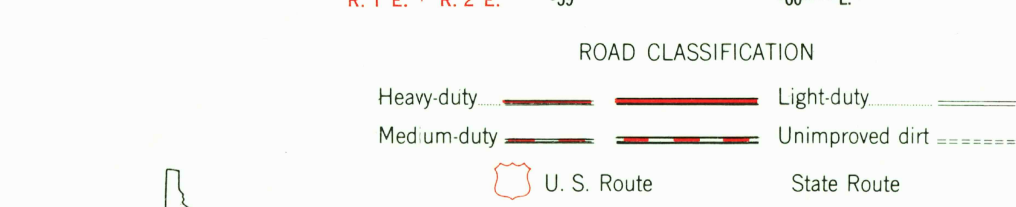
Topography from aerial photographs by multiplex methods
and by plane-table surveys 1953. Aerial photographs taken 1951

Polyconic projection. 1927 North American datum
10,000-foot grid based on Idaho coordinate system,
west zone
1000-meter Universal Transverse Mercator grid ticks,
zone 11, shown in blue

To place on the predicted North American Datum 1983
move the projection lines 15 meters north and
77 meters east as shown by dashed corner ticks



THIS MAP COMPLIES WITH NATIONAL MAP ACCURACY STANDARDS
FOR SALE BY U. S. GEOLOGICAL SURVEY, DENVER, COLORADO 80225, OR RESTON, VIRGINIA 22092
A FOLDER DESCRIBING TOPOGRAPHIC MAPS AND SYMBOLS IS AVAILABLE ON REQUEST



Revisions shown in purple compiled from aerial photographs
taken 1976 and other source data. This information not
field checked. Map edited 1979
Purple tint indicates extension of urban areas

EAGLE, IDAHO
43116-F3-TF-024

1953
PHOTOREVISED 1979
DMA 2771 III NE-SERIES V893

USGS NHD HISTORICAL MAP
APR 23 1986
REC'D FILE COPY