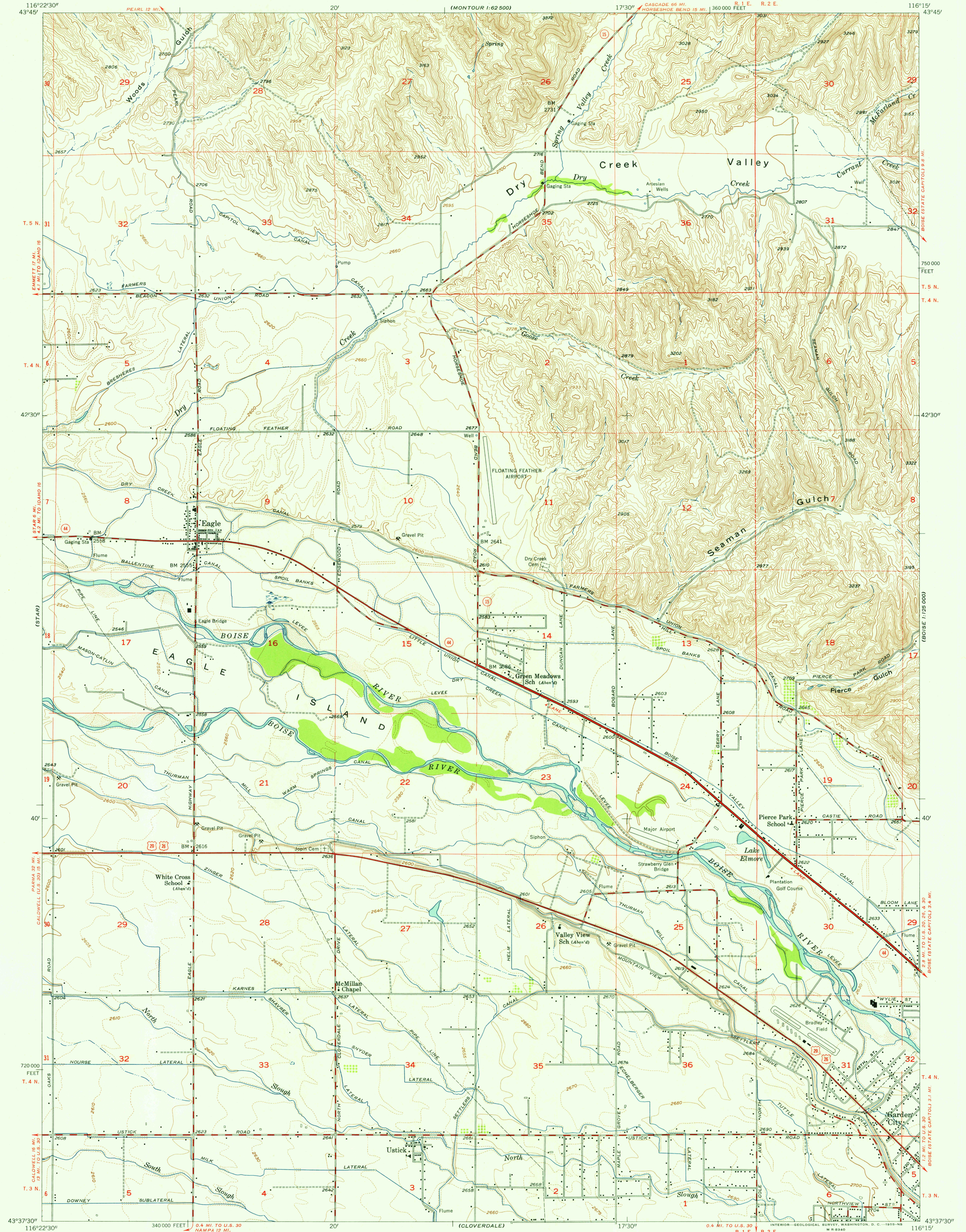


U.S.G.S.
FILE COPY
TOPOGRAPHIC DIVISION



Maped, edited, and published by the Geological Survey

Control by USGS and USC&GS

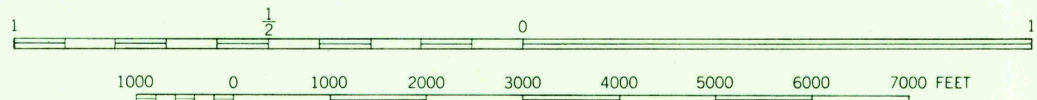
Topography from aerial photographs by multiplex methods and by plane-table surveys 1953. Aerial photographs taken 1951

Polyconic projection. 1927 North American datum 10,000-foot grid based on Idaho coordinate system, west zone

Dashed land lines indicate approximate locations

Unchecked elevations are shown in brown

SCALE 1:24,000



CONTOUR INTERVAL 20 FEET
DASHED LINES REPRESENT 5 FOOT CONTOURS
DATUM IS MEAN SEA LEVEL

ROAD CLASSIFICATION
Heavy-duty ——— Light-duty ———
Medium-duty ——— Unimproved dirt ———
U. S. Route ——— State Route ———



EAGLE, IDAHO
N4337.5-W11615/7.5

1953

U.S.G.S.
FILE COPY
TOPOGRAPHIC DIVISION

DEC 1 1955

2670