

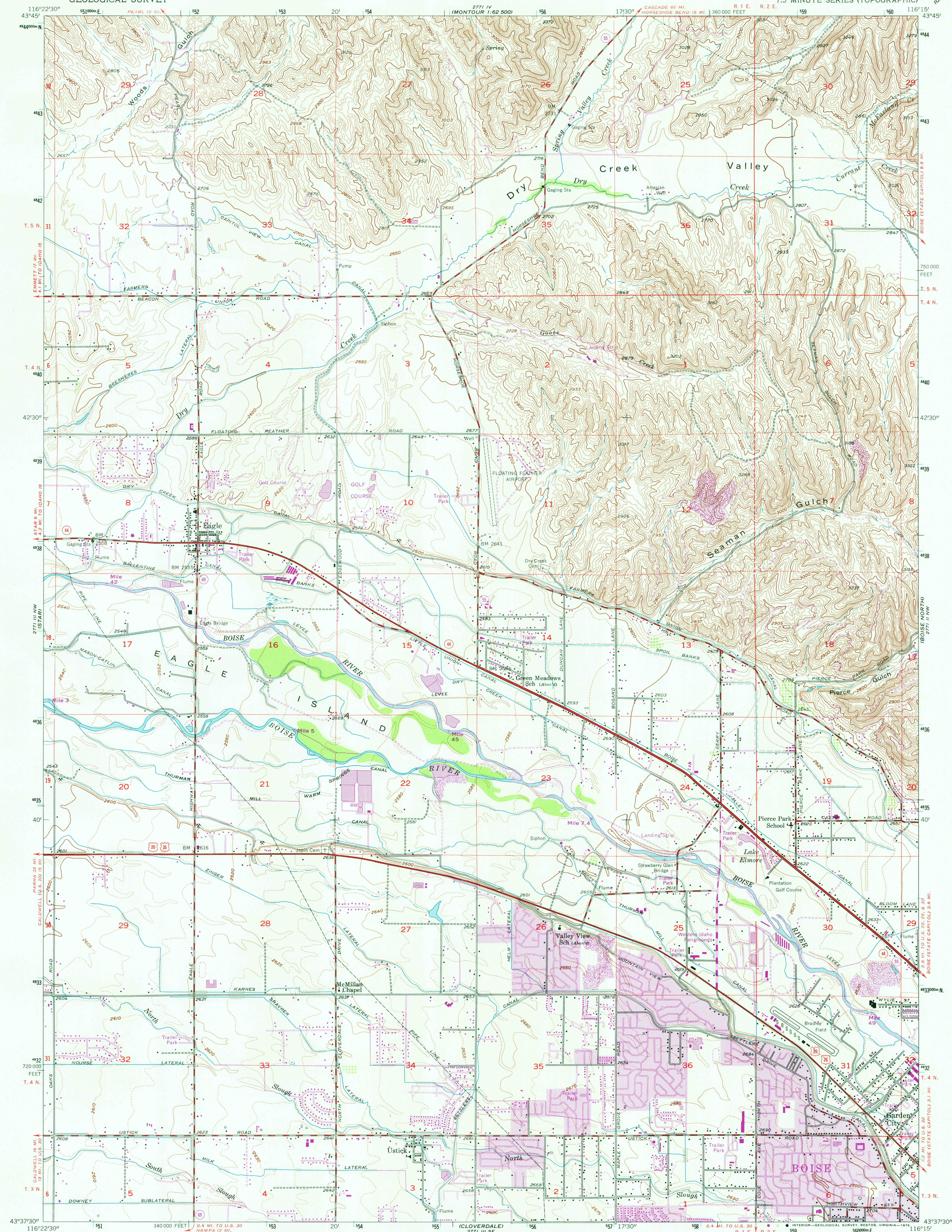
2771 IV
1:62,500

UNITED STATES
DEPARTMENT OF THE INTERIOR
GEOLOGICAL SURVEY



EAGLE QUADRANGLE
IDAHO-ADA CO.
7.5 MINUTE SERIES (TOPOGRAPHIC)

2771 IV
1:62,500
CARTWRIGHT CANYON



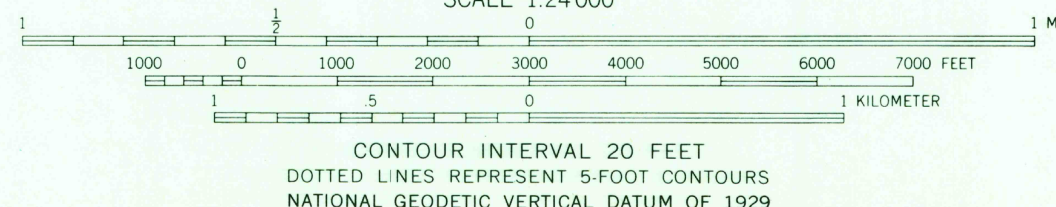
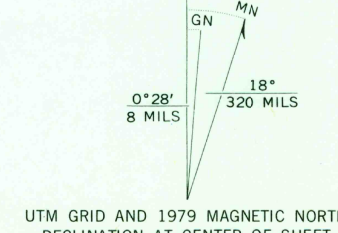
Mapped, edited, and published by the Geological Survey
Control by USGS and USC&GS

Topography from aerial photographs by multiplex methods
and by plane-table surveys 1953. Aerial photographs taken 1951

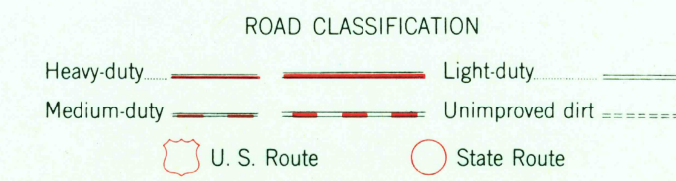
Polyconic projection. 1927 North American datum
10,000-foot grid based on Idaho coordinate system,
west zone
1000-meter Universal Transverse Mercator grid ticks,
zone 11, shown in blue

Revisions shown in purple compiled from aerial photographs
taken 1976 and other source data. This information not
field checked. Map edited 1979

Purple tint indicates extension of urban areas



THIS MAP COMPLIES WITH NATIONAL MAP ACCURACY STANDARDS
FOR SALE BY U.S. GEOLOGICAL SURVEY, DENVER, COLORADO 80225, OR RESTON, VIRGINIA 22092
A FOLDER DESCRIBING TOPOGRAPHIC MAPS AND SYMBOLS IS AVAILABLE ON REQUEST



USGS
Historical File
Topographic Division
EAGLE, IDAHO
N4337.5-W11615.7.5

APR 11 1978

1953
PHOTOREVISED 1979
AMS 2771 III NE-SERIES V893