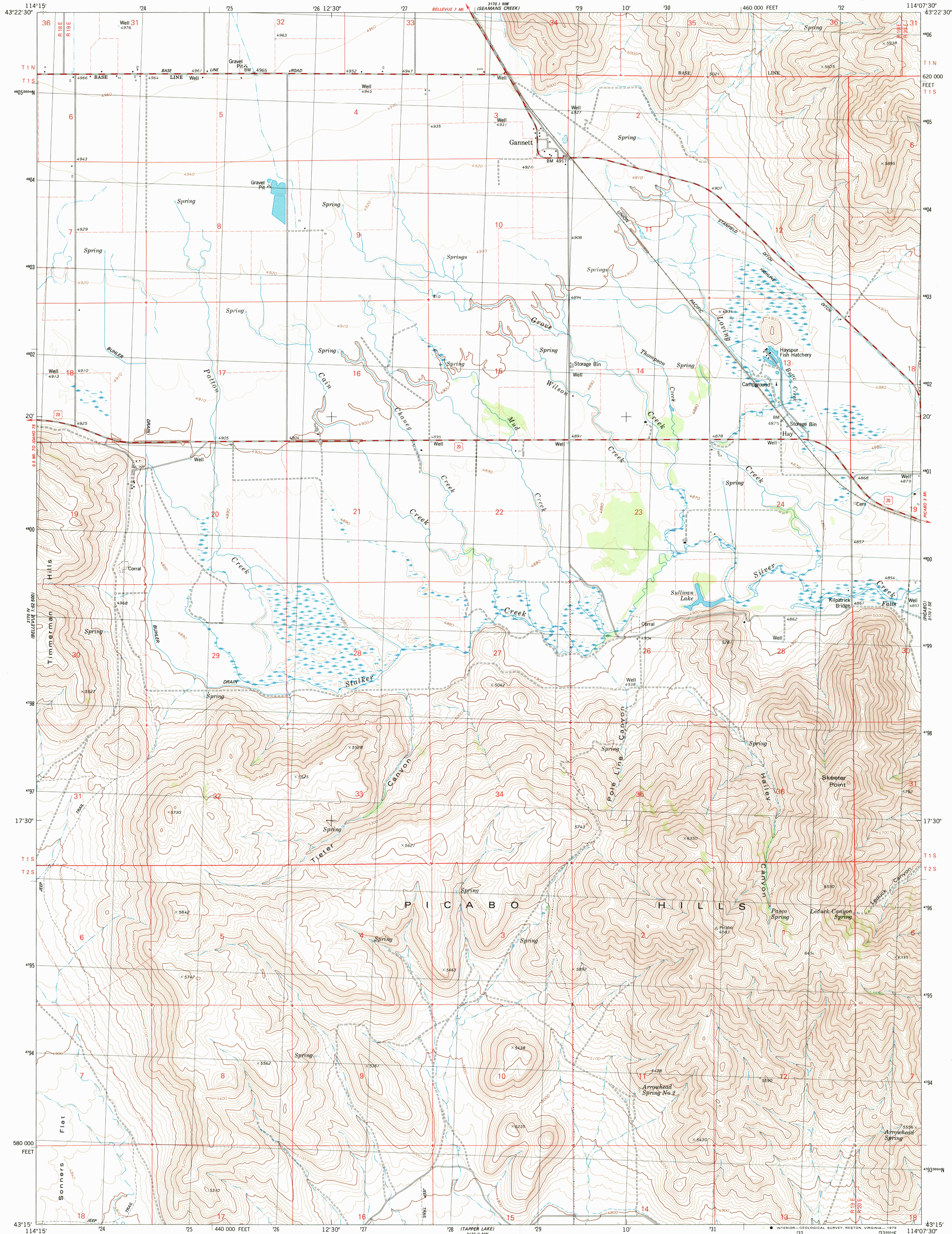
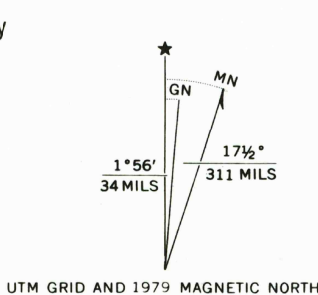


UNITED STATES
DEPARTMENT OF THE INTERIOR
GEOLOGICAL SURVEY

GANNETT QUADRANGLE
IDAHO-BLAINE CO
7.5 MINUTE SERIES (TOPOGRAPHIC)



Mapped, edited, and published by the Geological Survey
Control by USGS and NOS/NOAA
Topography by photogrammetric methods from aerial
photographs taken 1971. Field checked 1973
Map edited 1979
Projection and 10,000-foot grid ticks: Idaho coordinate
system, central zone (Transverse Mercator)
1000-meter Universal Transverse Mercator grid, zone 11
1927 North American datum
To place on the predicted North American Datum 1983
move the projection lines 13 meters north and
71 meters east as shown by dashed corner ticks
Fine red dashed lines indicate selected fence and field lines
where generally visible on aerial photographs
This information is unchecked



SCALE 1:24 000
1 000 0 1000 2000 3000 4000 5000 6000 7000 FEET
1 0 1 KILOMETER
CONTOUR INTERVAL 20 FEET
DOTTED LINES REPRESENT 10-FOOT CONTOURS
NATIONAL GEODETIC VERTICAL DATUM OF 1929

THIS MAP COMPLIES WITH NATIONAL MAP ACCURACY STANDARDS
FOR SALE BY U. S. GEOLOGICAL SURVEY, DENVER, COLORADO 80225, OR RESTON, VIRGINIA 22092
A FOLDER DESCRIBING TOPOGRAPHIC MAPS AND SYMBOLS IS AVAILABLE ON REQUEST

ROAD CLASSIFICATION
Primary highway, hard surface. Light-duty road, hard or improved surface.
Secondary highway, hard surface. Unimproved road.
Interstate Route U. S. Route State Route



GANNETT, IDAHO
N4315-W11407.5/7.5

1979
DMA 3170 I SW-SERIES V893

