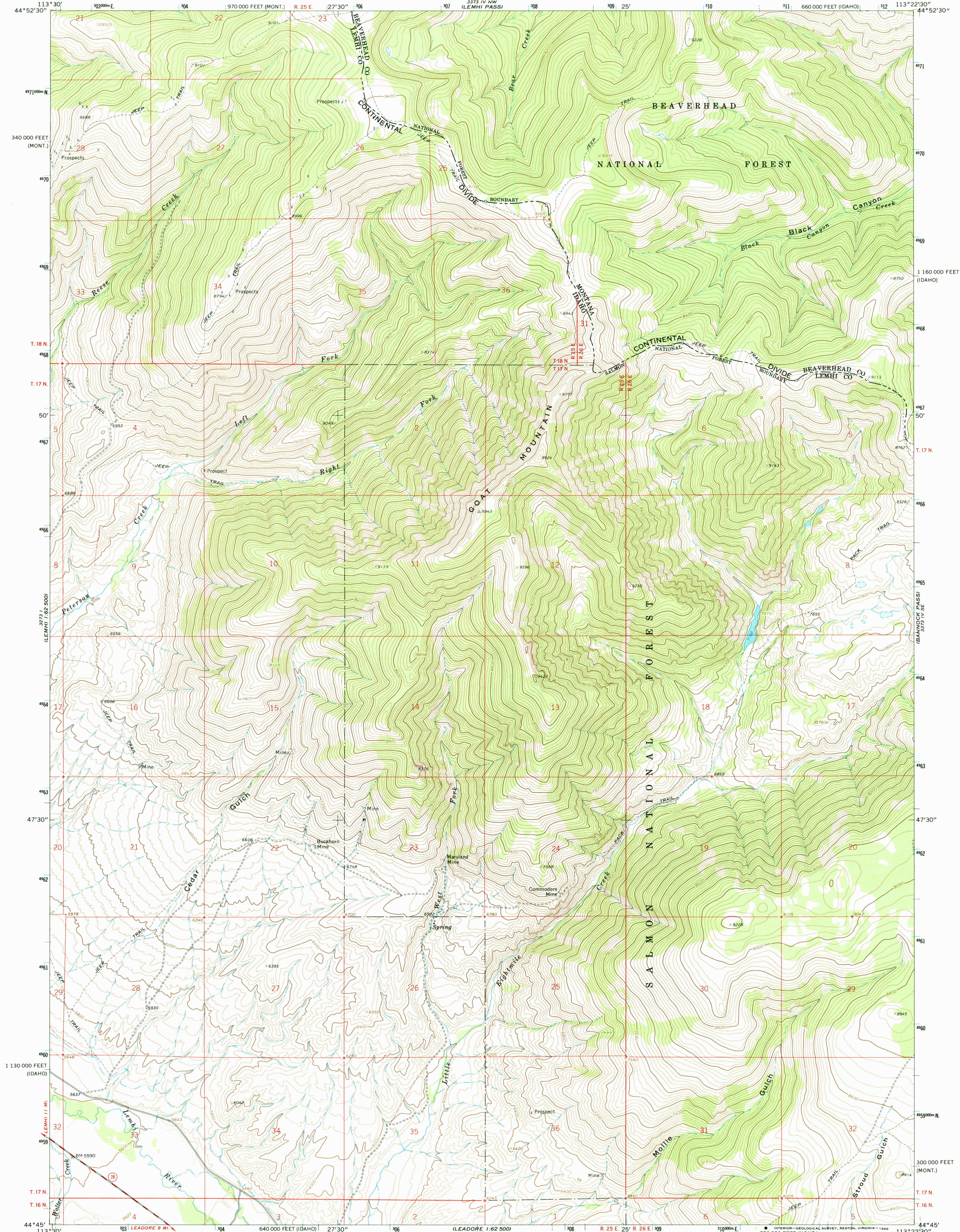


UNITED STATES
DEPARTMENT OF THE INTERIOR
GEOLOGICAL SURVEY

GOAT MOUNTAIN QUADRANGLE
IDAHO-MONTANA
7.5 MINUTE SERIES (TOPOGRAPHIC)



Mapped, edited, and published by the Geological Survey

Control by USGS and USC&GS

Topography by photogrammetric methods from aerial photographs taken 1964. Field checked 1965

Polyconic projection. 1927 North American datum

10,000-foot grids based on Idaho coordinate system, central zone, and Montana coordinate system, south zone

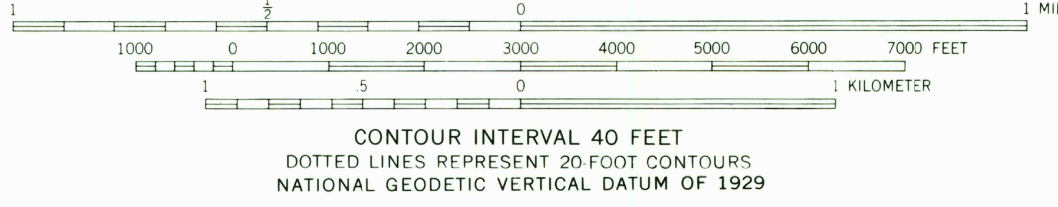
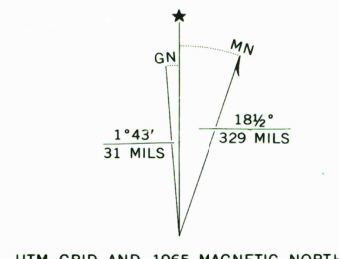
1000-meter Universal Transverse Mercator grid ticks, zone 12, shown in blue

To place on the predicted North American Datum 1983 move the projection lines 12 meters north and 70 meters east as shown by dashed corner ticks

Fine red dashed lines indicate selected fence lines

Where omitted, land lines have not been established

There may be private inholdings within the boundaries of the National or State reservations shown on this map



CONTOUR INTERVAL 40 FEET
DOTTED LINES REPRESENT 20 FOOT CONTOURS
NATIONAL GEODETIC DATUM OF 1929



QUADRANGLE LOCATION

ROAD CLASSIFICATION
Medium-duty ——— Light-duty ———
Unimproved dirt ———
State Route

GOAT MOUNTAIN, IDAHO-MONT.
44113-G4-TF-024

1965

DMA 3373 IV SW-SERIES V893

USGS NMD HISTORICAL MAP

JAN 24 1966

1:50,000