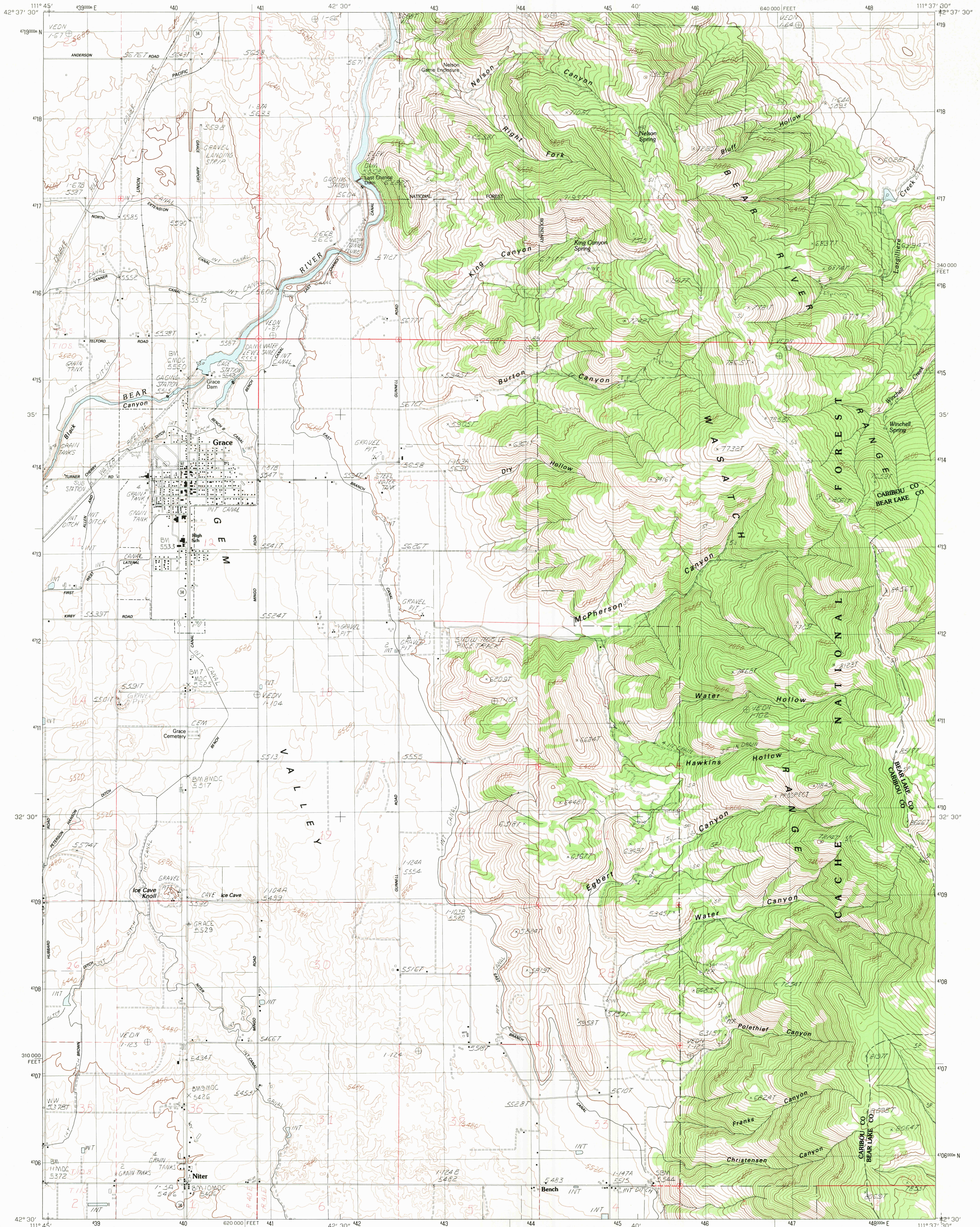


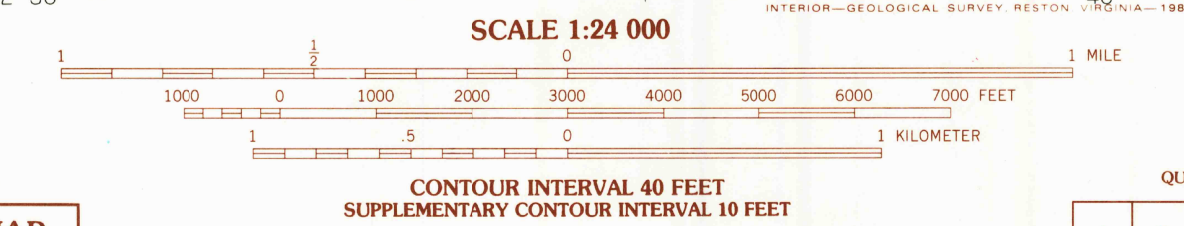
UNITED STATES
DEPARTMENT OF THE INTERIOR
GEOLOGICAL SURVEY

GRACE QUADRANGLE
IDAHO
7.5 MINUTE SERIES (TOPOGRAPHIC)



PRODUCED BY THE UNITED STATES GEOLOGICAL SURVEY
CONTROL BY USGS NOS/NOA
FIELD CHECKED 1979. MAP EDITED 1982
PROJECTION TRANSVERSE MERCATOR
GRID: 1000-METER UNIVERSAL TRANSVERSE MERCATOR, ZONE 12
10,000-FOOT STATE GRID TICS IDAHO, EAST ZONE
UTM GRID DECLINATION 0°28' WEST
1980 MAGNETIC NORTH DECLINATION 15°30' EAST
VERTICAL DATUM NATIONAL GEODETIC DATUM OF 1929
HORIZONTAL DATUM 1927 NORTH AMERICAN DATUM
To place on the predicted North American Datum of 1983,
move the projection lines as shown by dashed corner ticks
(12 meters north / 65 meters east)
There may be private inholdings within the boundaries of any
Federal and State Reservations shown on this map
Where omitted, land lines have not been established

PROVISIONAL MAP
Produced from original
manuscript drawings. Infor-
mation shown as of date of
field check.



QUADRANGLE LOCATION							
1	2	3	4	5	6	7	8
1 Talmage 2 Alexander 3 Soda Springs 4 Grace Power Plant 5 Soda Peak 6 Thatcher Hill 7 Thatcher 8 North Canyon							

ROAD LEGEND
Improved Road.....
Unimproved Road.....
Trail.....
Interstate Route.....
U.S. Route.....
State Route.....

GRACE, IDAHO
PROVISIONAL EDITION 1982

42111-E6-TF-024

THIS MAP COMPLIES WITH NATIONAL MAP ACCURACY STANDARDS
FOR SALE BY U. S. GEOLOGICAL SURVEY, DENVER, COLORADO 80225, OR RESTON, VIRGINIA 22029

JAN 27 1983

1900