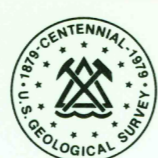
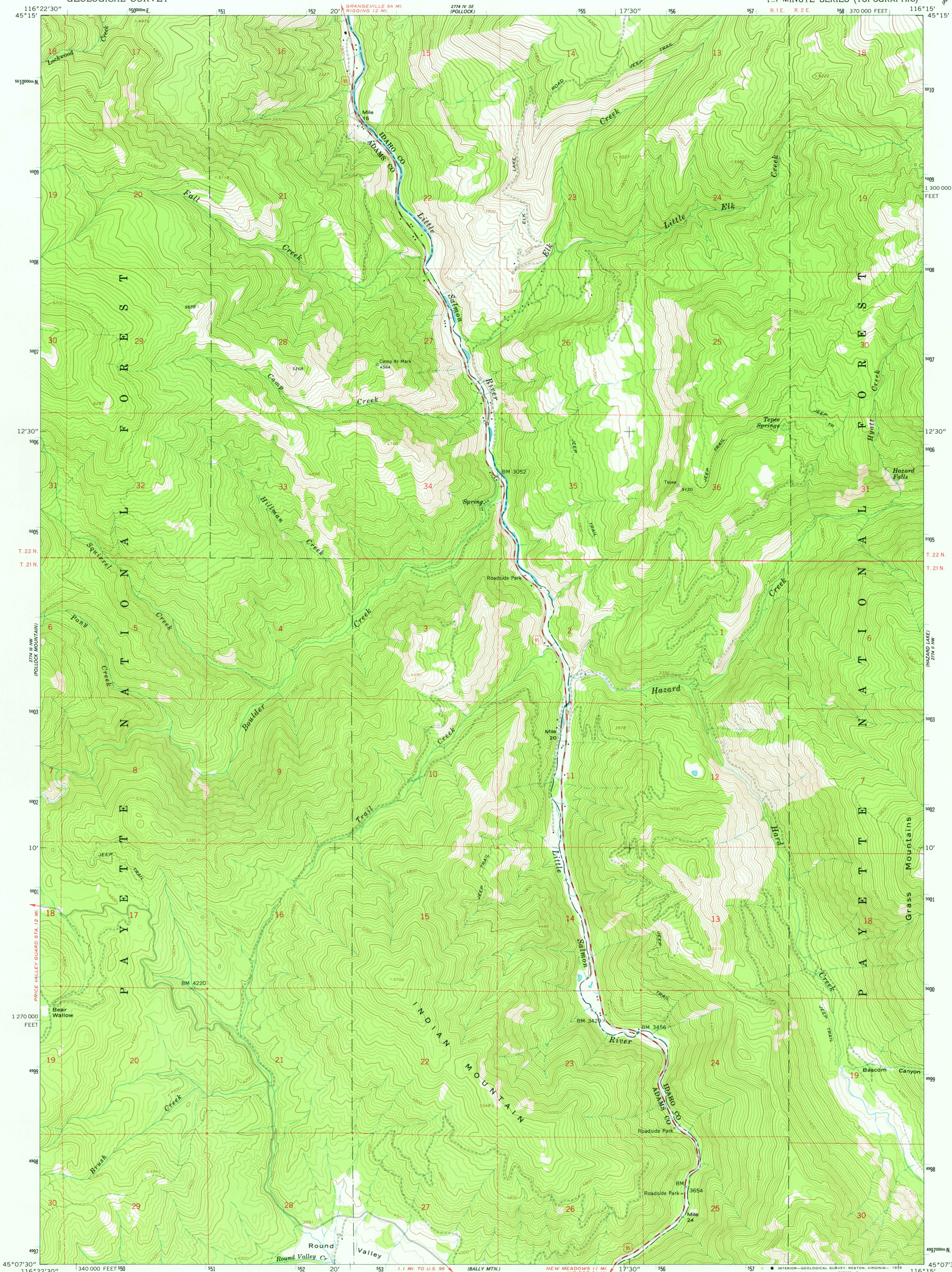


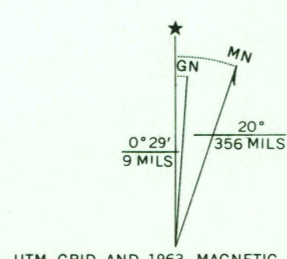
UNITED STATES
DEPARTMENT OF THE INTERIOR
GEOLOGICAL SURVEY



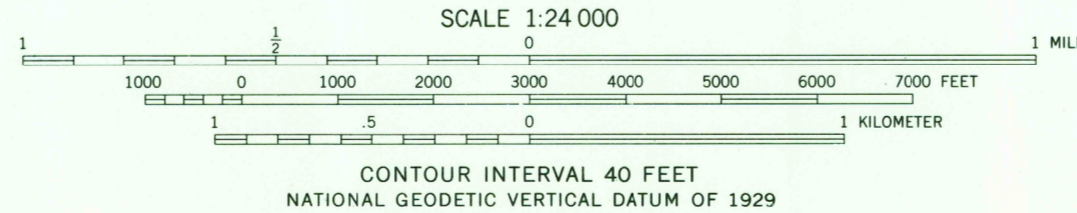
INDIAN MOUNTAIN QUADRANGLE
IDAHO
7.5 MINUTE SERIES (TOPOGRAPHIC)



Mapped, edited, and published by the Geological Survey
Control by USGS and USC&GS
Topography by photogrammetric methods from aerial
photographs taken 1959. Field checked 1963
Polyconic projection. 1927 North American datum
10,000-foot grid based on Idaho coordinate system, west zone
1000-meter Universal Transverse Mercator grid ticks,
zone 11, shown in blue



UTM GRID AND 1963 MAGNETIC NORTH
DECLINATION AT CENTER OF SHEET



SCALE 1:24 000
CONTOUR INTERVAL 40 FEET
NATIONAL GEODETIC VERTICAL DATUM OF 1929



QUADRANGLE LOCATION

USGS
Historical File
Topographic Division

ROAD CLASSIFICATION
Medium-duty ——— Light-duty ———
Unimproved dirt ———
U.S. Route

INDIAN MOUNTAIN, IDAHO
N4507.5—W11615/7.5

1963

AMS 2774 III NE—SERIES V893

MAR 19 1978

2500