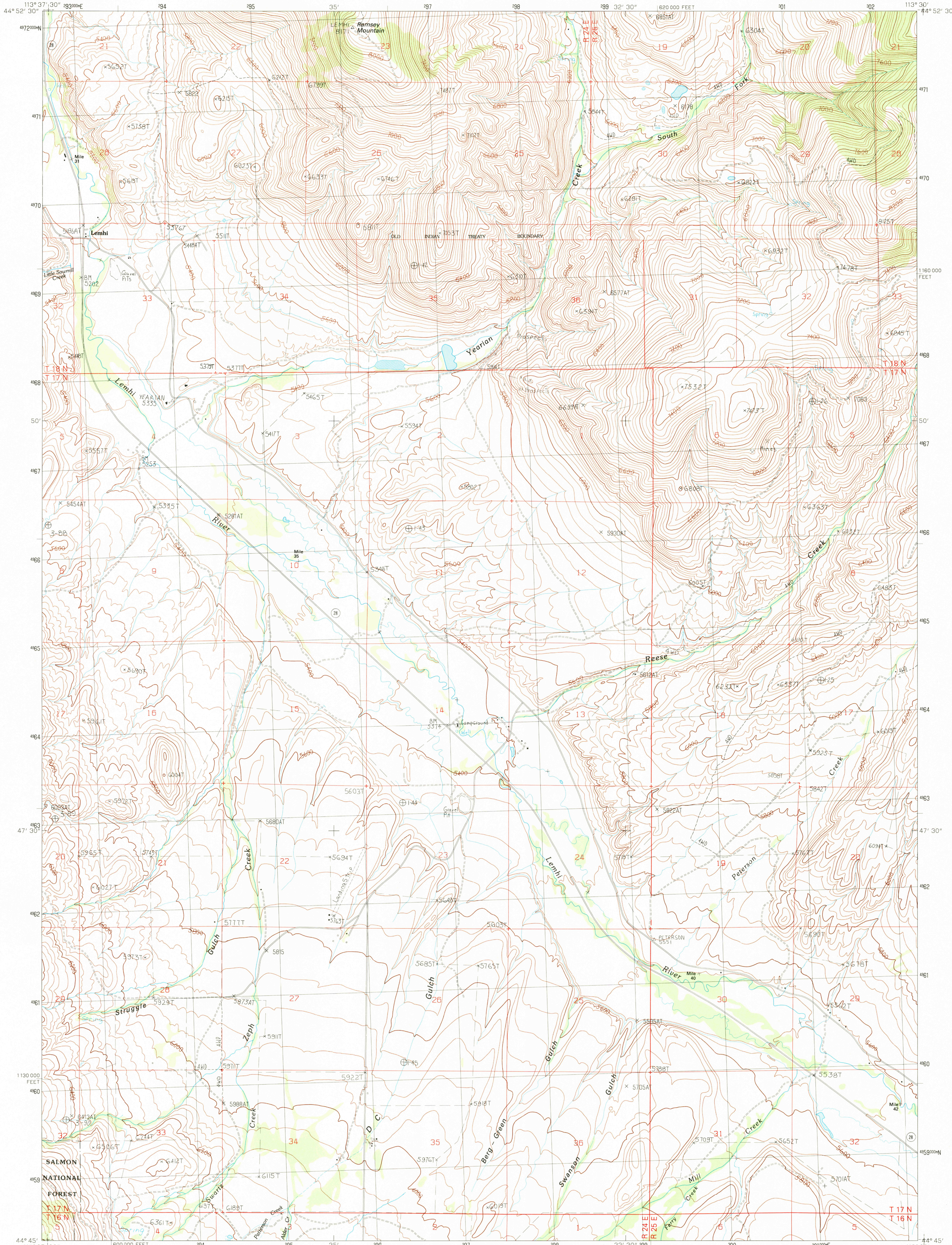


UNITED STATES
DEPARTMENT OF THE INTERIOR
GEOLOGICAL SURVEY

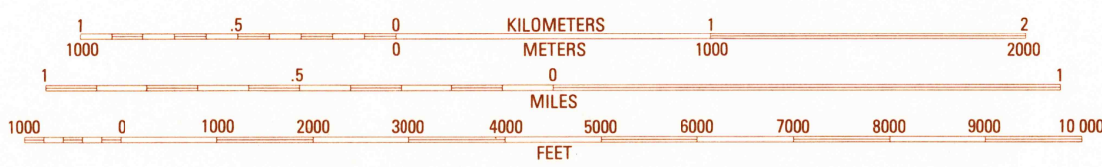
LEMHI QUADRANGLE
IDAHO-LEMHI CO.
7.5 MINUTE SERIES (TOPOGRAPHIC)



PRODUCED BY THE UNITED STATES GEOLOGICAL SURVEY
CONTROL BY
COMPILED FROM AERIAL PHOTOGRAPHS TAKEN 1984 AND 1985
FIELD CHECKED 1986. MAP EDITED 1989
PROJECTION TRANSVERSE MERCATOR
GRID: 10,000-METER UNIVERSAL TRANSVERSE MERCATOR ZONE 12
10,000-FOOT STATE GRID TICKS IDAHO, CENTRAL ZONE
UTM GRID DECLINATION 1.48 WEST
1989 MAGNETIC NORTH DECLINATION 16.90 EAST
VERTICAL DATUM NATIONAL GEODETIC VERTICAL DATUM OF 1929
HORIZONTAL DATUM 1927 NORTH AMERICAN DATUM
To place on the predicted North American Datum of 1983,
move the projection lines as shown by dashed corner ticks
(12 meters north and 70 meters east)
There may be private inholdings within the boundaries of any
Federal and State Reservations shown on this map

PROVISIONAL MAP
Produced from original
manuscript drawings. Information
shown as of date of
photography.

SCALE 1:24 000



CONTOUR INTERVAL 40 FEET

To convert meters to feet multiply by 3.2808
To convert feet to meters multiply by .3048

THIS MAP COMPLIES WITH NATIONAL MAP ACCURACY STANDARDS
FOR SALE BY U.S. GEOLOGICAL SURVEY, DENVER, COLORADO 80225
OR RESTON, VIRGINIA 22092



QUADRANGLE LOCATION

1	2	3	1 Tendoy
4	5	6	2 Agency Creek
7	8	9	3 Lemhi Pass
		10	4 Hayden Creek
		11	5 Goat Mountain
		12	6 Moss Mountain
		13	7 Stroud Creek
		14	8 West of Leadore

ADJOINING 7.5 QUADRANGLE NAMES

ROAD LEGEND

Improved Road
Unimproved Road
Trail
Interstate Route U.S. Route State Route

LEMHI, IDAHO

PROVISIONAL EDITION 1989

44113-G5-TF-024

U.S. GEOLOGICAL SURVEY
MAR 27 1990
REDFILE COPY