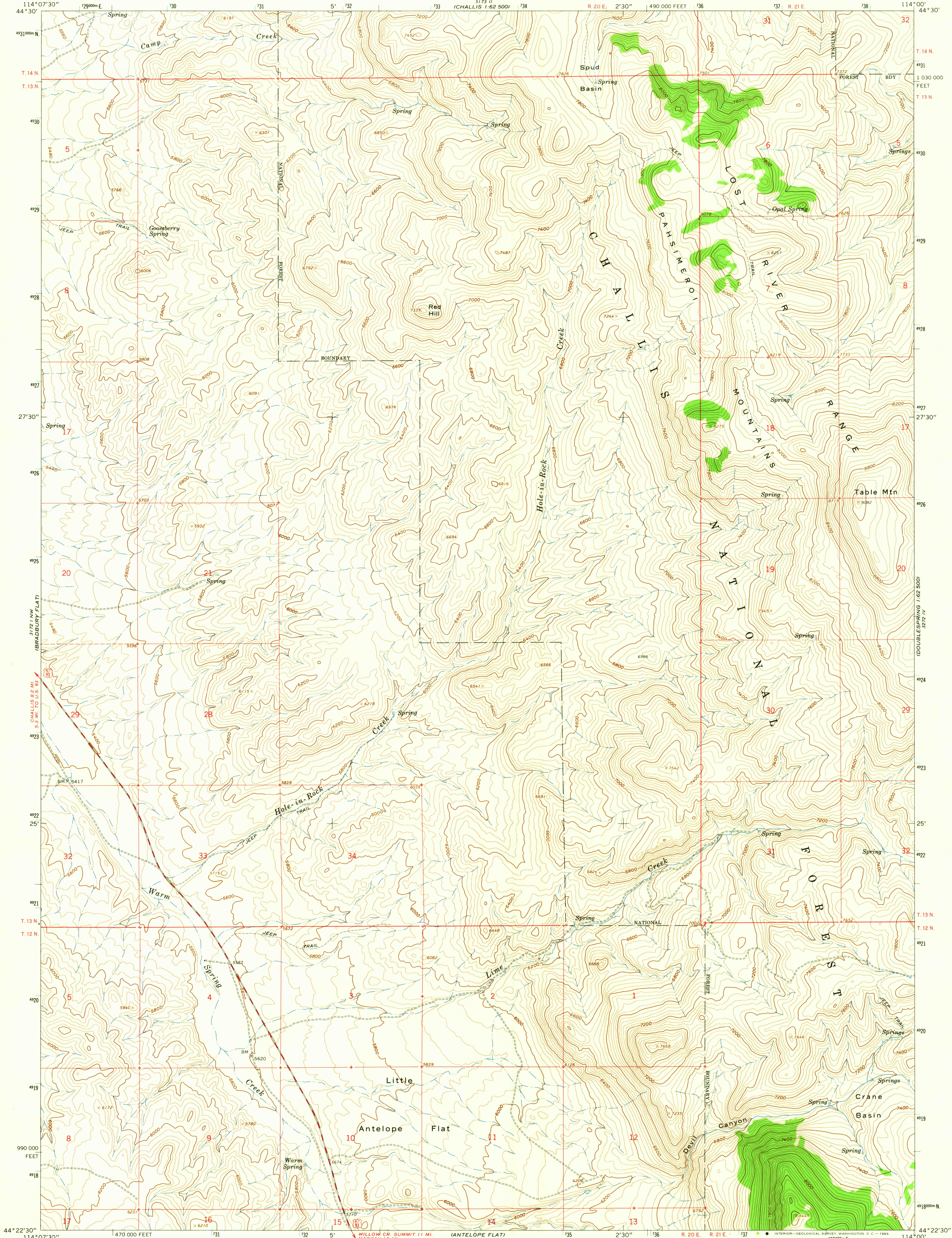


3172 II  
(CHALLIS)  
1:62 500



Mapped, edited, and published by the Geological Survey

Control by USGS and USC&GS

Topography by photogrammetric methods from aerial

photographs taken 1957. Field checked 1963

Polycyclic projection, 1927 North American datum

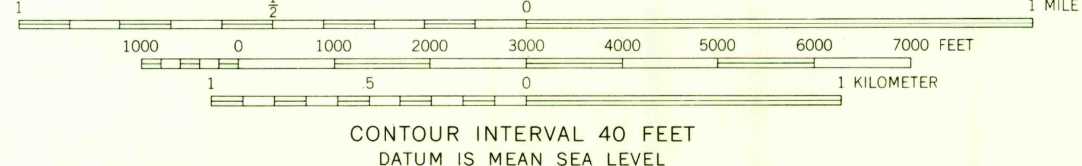
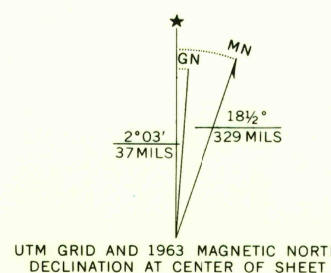
10,000-foot grid based on Idaho coordinate system,

central zone

1000-meter Universal Transverse Mercator grid ticks,

zone 11, shown in blue

Where omitted, land lines have not been established



USGS  
Historical File  
Topographic Division



ROAD CLASSIFICATION  
Medium-duty ——— Unimproved dirt ———  
U.S. Route

LITTLE ANTELOPE FLAT, IDAHO  
NE/4 LONE PINE PEAK 15' QUADRANGLE  
N4422.5—W11400/7.5

1963

AMS 3172 I NE—SERIES V893

MAR 10 1965

2210

U.S.G.S.  
FILE COPY  
TOPOGRAPHIC DIVISION