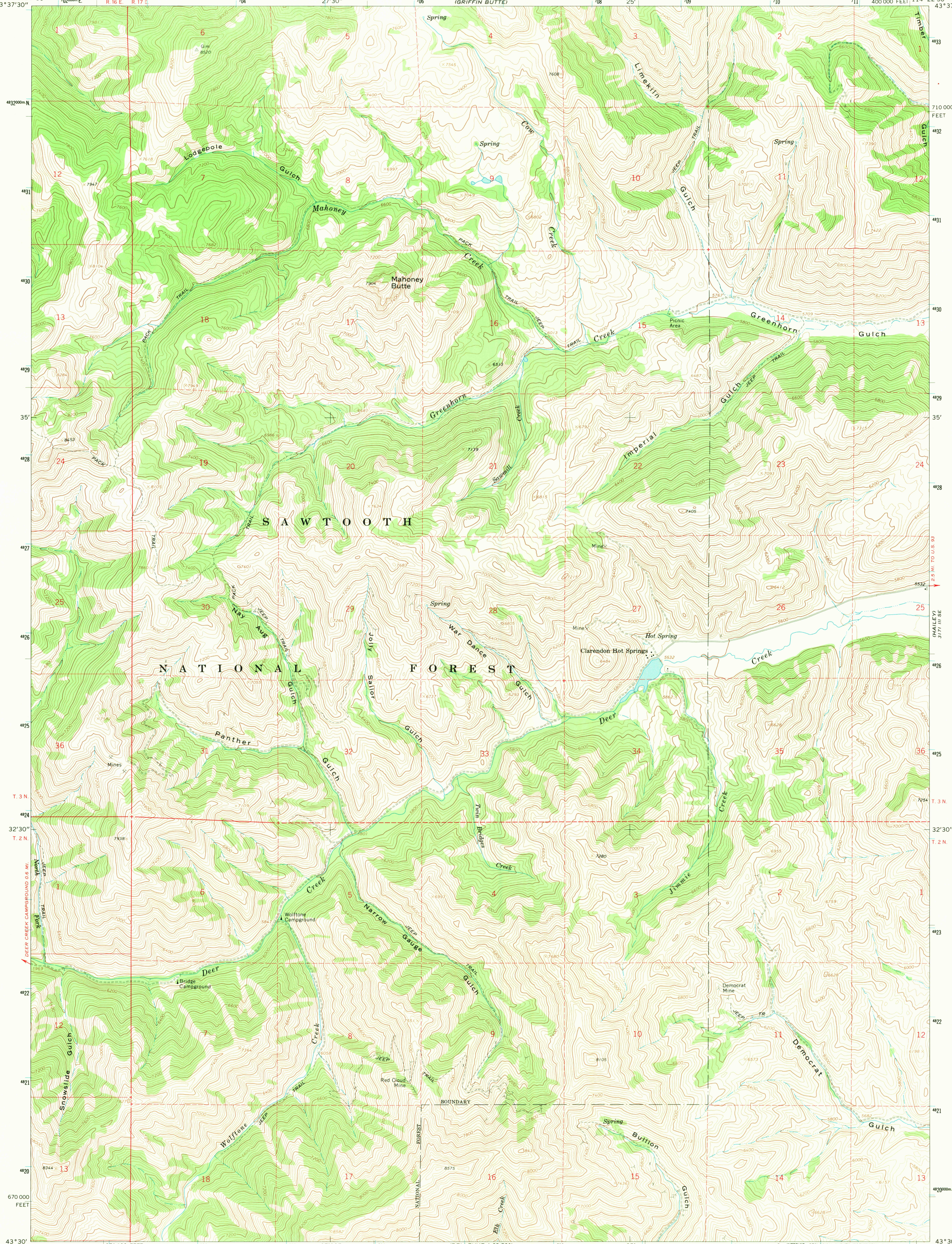
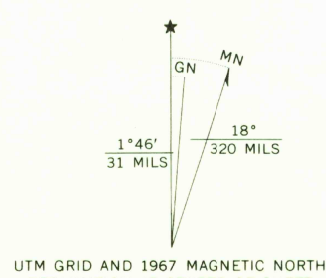


114°30' 43°37'30" 114°22'30" 43°37'30" 114°22'30" 43°37'30"



Mapped, edited, and published by the Geological Survey
Control by USGS and USC&GS
Topography by photogrammetric methods from aerial
photographs taken 1966. Field checked 1967
Polyconic projection. 1927 North American datum
10,000-foot grid based on Idaho coordinate system,
central zone
1000-meter Universal Transverse Mercator grid ticks,
zone 11, shown in blue



SCALE 1:24,000
1 1000 0 1000 2000 3000 4000 5000 6000 7000 FEET
1 KILOMETER
CONTOUR INTERVAL 40 FEET
DATUM IS MEAN SEA LEVEL



ROAD CLASSIFICATION
Light-duty ————— Unimproved dirt —————

USGS MAHONEY BUTTE, IDAHO
HISTORICAL FILE 4330—W11422.5/7.5
TOPOGRAPHIC DIVISION
1967
AMS 3171 III SW—SERIES V893

2280
AUG 2 1971
USGS
HISTORICAL FILE
TOPOGRAPHIC DIVISION