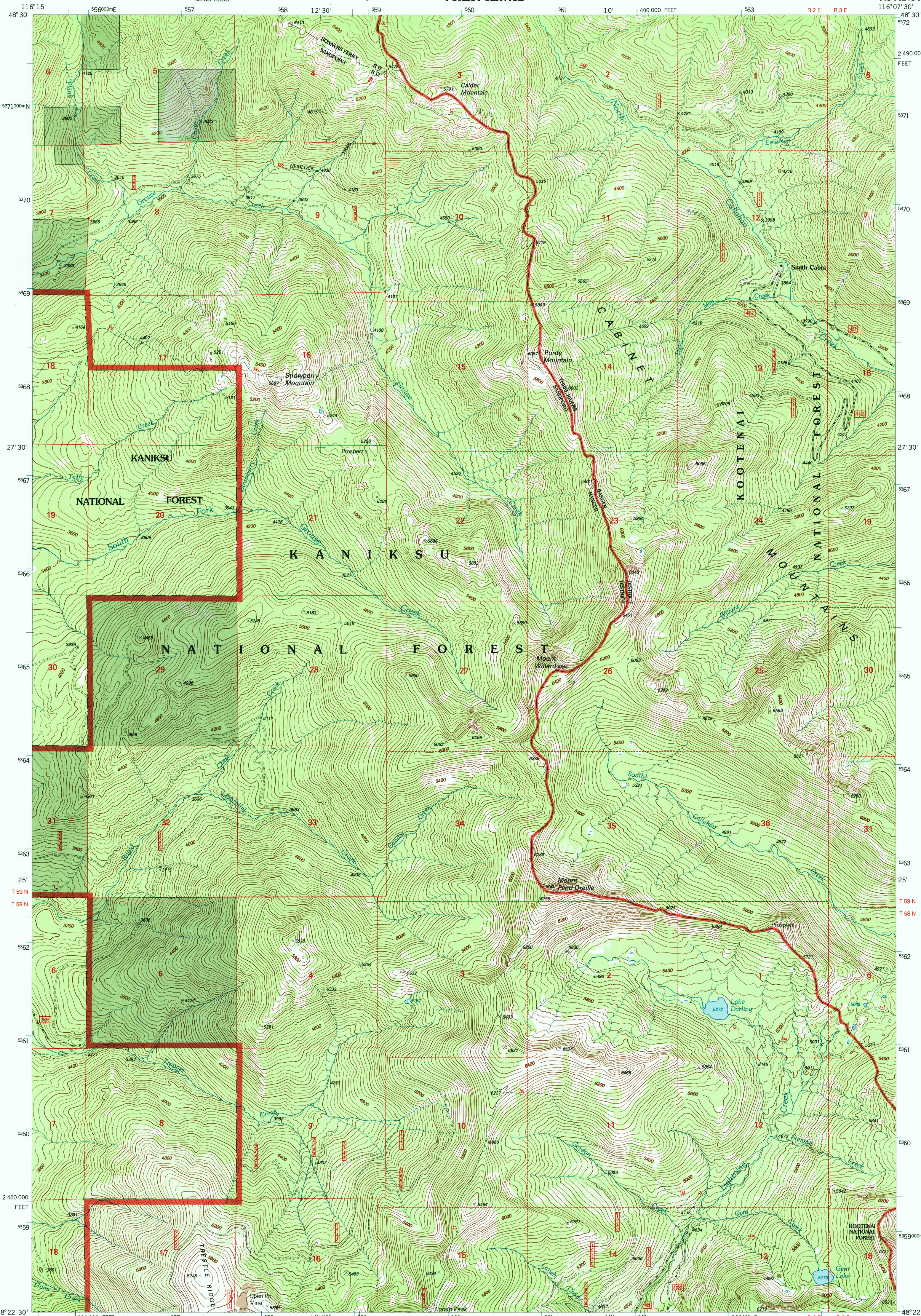


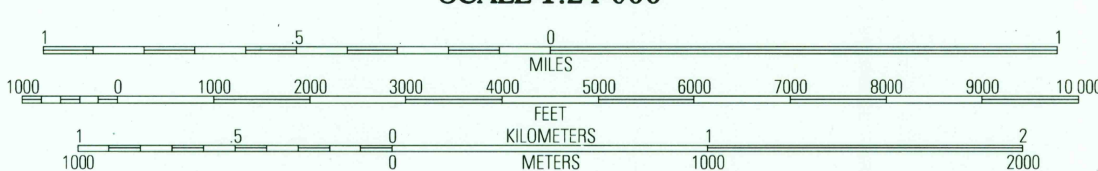
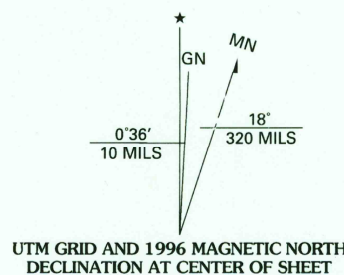
RECEIVED
FEB 29 2000
USGS AND
HISTORICAL MAP ARCHIVES



RECEIVED
FEB 29 2000
USGS AND
HISTORICAL MAP ARCHIVES



Produced by the United States Geological Survey 1989
Revision by the USDA Forest Service 1996
Topography compiled 1986. Planimetry derived from imagery taken 1992
Public Land Survey System and survey control current as of 1996
North American Datum of 1927 (NAD 27). Projection and 10 000-foot ticks:
Idaho coordinate system, west zone (transverse Mercator)
Blue 1000-meter Universal Transverse Mercator ticks, zone 11
North American Datum of 1983 (NAD 83) is shown by dashed corner ticks
The values of the shift between NAD 27 and NAD 83 for 7.5-minute
intersections are obtainable from National Geodetic Survey NADCON software
Non-National Forest System lands within the National Forest
Inholdings may exist in other National or State reservations
This map is not a legal land line or ownership document. Public lands are
subject to change and leasing, and may have access restrictions; check
with local offices. Obtain permission before entering private lands
Unsurveyed land net is not official



CONTOUR INTERVAL 40 FEET
NATIONAL GEODETIC VERTICAL DATUM OF 1929
TO CONVERT FROM FEET TO METERS, MULTIPLY BY 0.3048

THIS MAP COMPLIES WITH NATIONAL MAP ACCURACY STANDARDS
FOR SALE BY U.S. GEOLOGICAL SURVEY, P.O. BOX 25286, DENVER, COLORADO 80225
A FOLDER DESCRIBING TOPOGRAPHIC MAPS AND SYMBOLS IS AVAILABLE ON REQUEST



1	2	3	1 Twentymile Creek
4	5	2 Clifty Mountain	3 Leonia
6	7	4 Wyle Knob	5 South Mountain
		6 Trout Peak	7 Trestle Peak
		8 Benning Mountain	

Interstate	U. S.	State	County	National Forest, suitable for passenger cars	National Forest, suitable for high clearance vehicles	National Forest Trail
1	2	3	4	5	6	7
8	9	10	11	12	13	14
15	16	17	18	19	20	21
22	23	24	25	26	27	28
29	30	31	32	33	34	35
36	37	38	39	40	41	42
43	44	45	46	47	48	49
50	51	52	53	54	55	56
57	58	59	60	61	62	63
64	65	66	67	68	69	70
71	72	73	74	75	76	77
78	79	80	81	82	83	84
85	86	87	88	89	90	91
92	93	94	95	96	97	98
99	100	101	102	103	104	105

MOUNT PEND OREILLE, ID
1996
NIMA 2780 1 NW - SERIES V893