

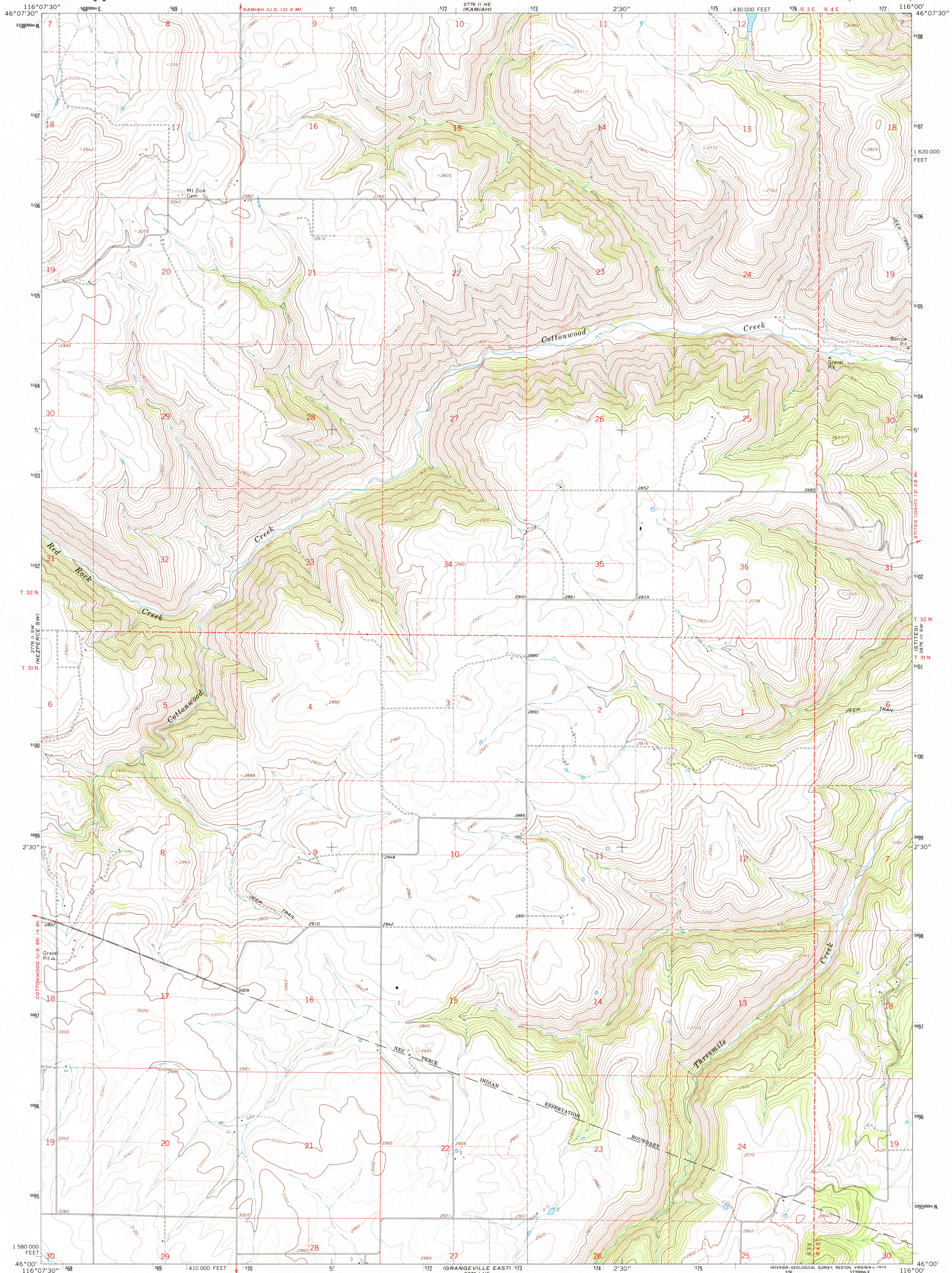
NEZPERCE
2776 II NE



U.S. DEPARTMENT OF THE INTERIOR
U.S. GEOLOGICAL SURVEY

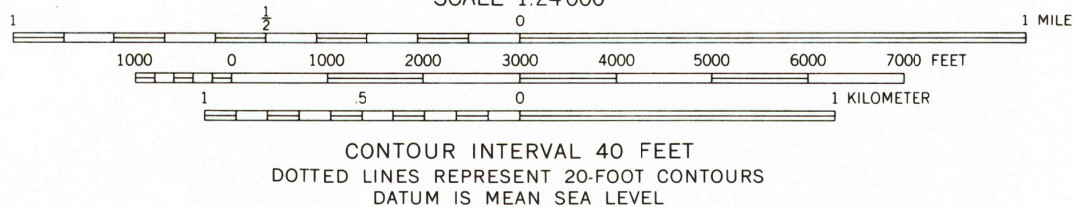
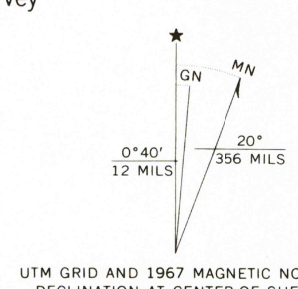
NEZPERCE SE QUADRANGLE
IDAHO-IDAHO CO.
7.5 MINUTE SERIES (TOPOGRAPHIC)

2776 II NW
(ROOKW)



Mapped, edited, and published by the Geological Survey
Control by USGS and USC&GS

Topography by photogrammetric methods from aerial
photographs taken 1966. Field checked 1967
Polyconic projection. 1927 North American datum
10,000-foot grid based on Idaho coordinate system,
west zone
1000-meter Universal Transverse Mercator grid ticks,
zone 11, shown in blue
Fine red dashed lines indicate selected fence lines



THIS MAP COMPLIES WITH NATIONAL MAP ACCURACY STANDARDS
FOR SALE BY U.S. GEOLOGICAL SURVEY, P.O. BOX 25286, DENVER, COLORADO 80225
A FOLDER DESCRIBING TOPOGRAPHIC MAPS AND SYMBOLS IS AVAILABLE ON REQUEST

ROAD CLASSIFICATION
Light duty ————— Unimproved dirt - - - - -



NEZPERCE SE, IDAHO
N4600—W11600/7.5

1967

AMS 2776 II SE—SERIES V893

HISTORICAL MAP ARCHIVES

USGS NHD

DEC 3 1 1998

RECEIVED

