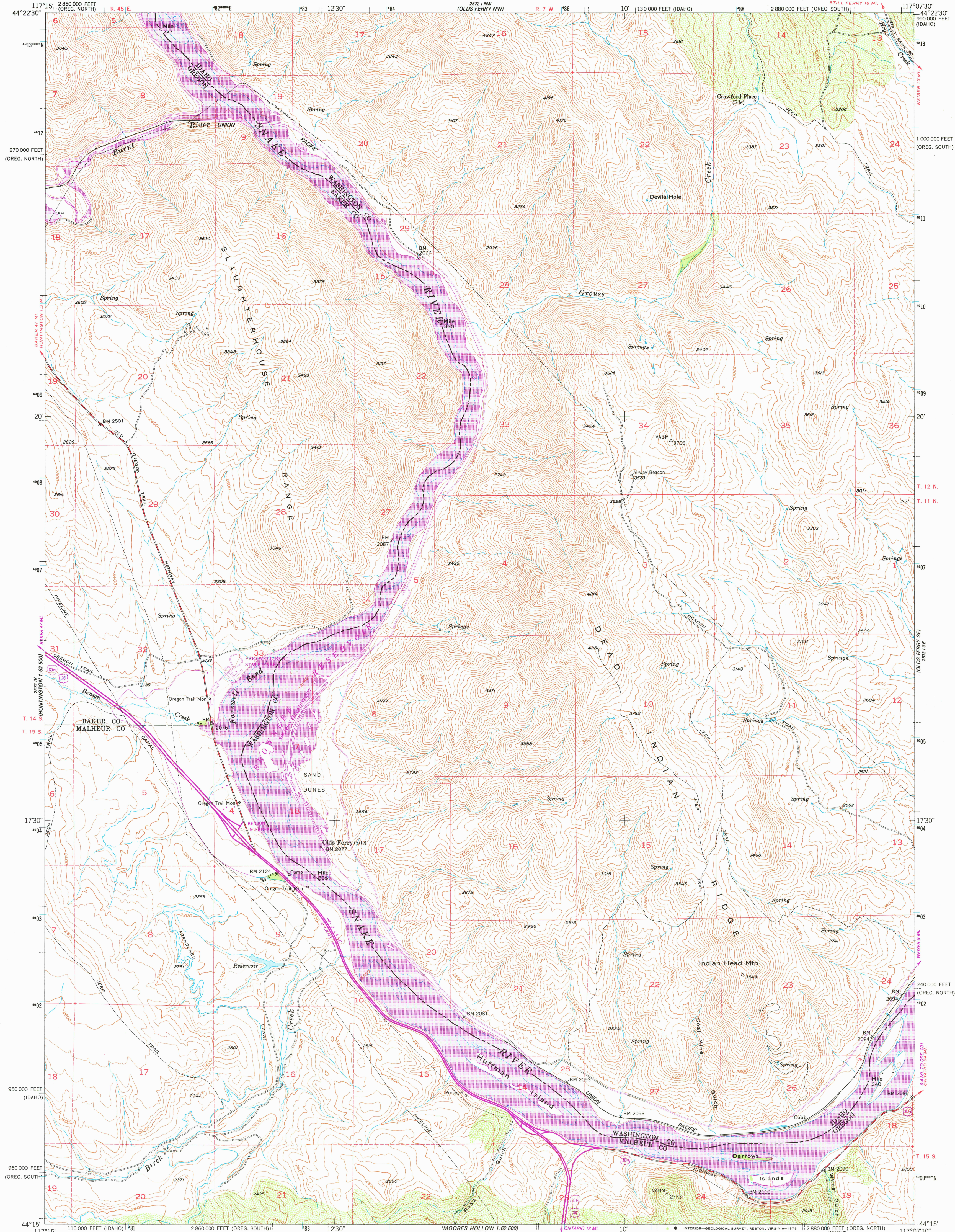


UNITED STATES
DEPARTMENT OF THE INTERIOR
GEOLOGICAL SURVEY

OLDS FERRY QUADRANGLE
IDAHO-OREGON
7.5 MINUTE SERIES (TOPOGRAPHIC)
SW/4 OLDS FERRY 15' QUADRANGLE
STILL FERRY 16 MI.
OLD FERRY 16 MI.



Mapped, edited, and published by the Geological Survey

Control by USGS and NOS/NOAA

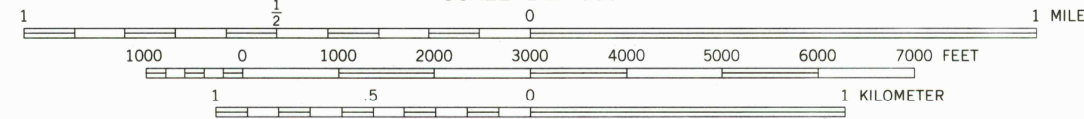
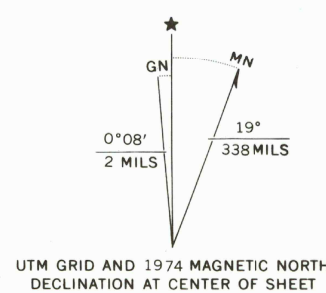
Topography from aerial photographs by multiplex methods

Aerial photographs taken 1950. Field check 1952

Polycyclic projection. 1927 North American datum
10,000-foot grids based on Idaho coordinate system, west zone
and Oregon coordinate system, north and south zones

Dashed land lines indicate approximate locations

1000-meter Universal Transverse Mercator grid ticks,
zone 11, shown in blue



CONTOUR INTERVAL 40 FEET
DOTTED LINES REPRESENT 20-FOOT CONTOURS
NATIONAL GEODETIC VERTICAL DATUM OF 1929



USGS
Historical File
Topographic Division
OLDS FERRY, IDAHO-OREG.
SW/4 OLDS FERRY 15' QUADRANGLE
N4415-W11707.5/7.5

THIS MAP COMPLIES WITH NATIONAL MAP ACCURACY STANDARDS
FOR SALE BY U. S. GEOLOGICAL SURVEY, DENVER, COLORADO 80225, OR RESTON, VIRGINIA 22092
A FOLDER DESCRIBING TOPOGRAPHIC MAPS AND SYMBOLS IS AVAILABLE ON REQUEST

Revisions shown in purple compiled from aerial photographs
taken 1974. This information not field checked

1952
PHOTOREVISED 1974
AMS 2572 I SW-SERIES V893

MAY 04 1978

3150